



# SOUTHEAST GAP ANALYSIS PROJECT



## Species Modeling Report

### Canvasback

#### *Aythya valisineria*

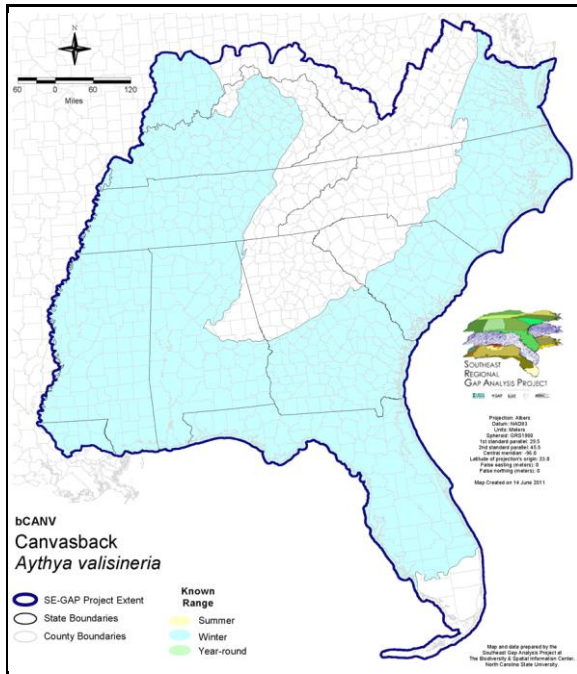
Taxa: Avian  
 Order: Anseriformes  
 Family: Anatidae

SE-GAP Spp Code: **bCANV**

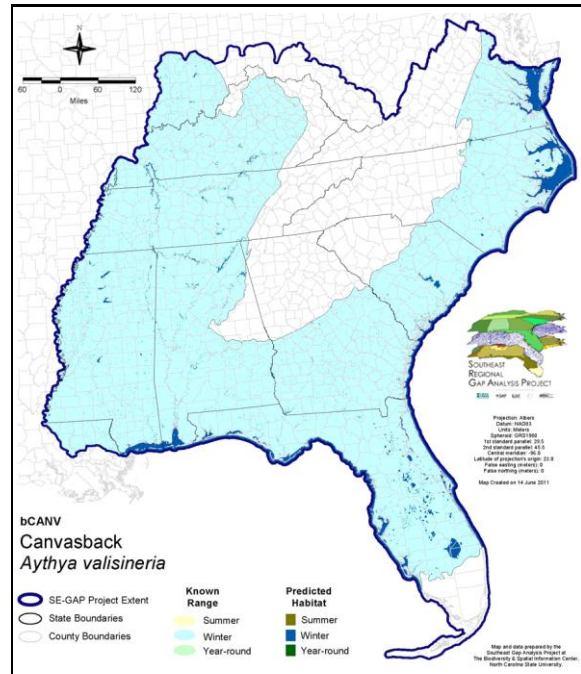
ITIS Species Code: 175129

NatureServe Element Code: ABNJB11020

#### KNOWN RANGE:



#### PREDICTED HABITAT:



Range Map Link: [http://www.basic.ncsu.edu/segap/datazip/maps/SE\\_Range\\_bCANV.pdf](http://www.basic.ncsu.edu/segap/datazip/maps/SE_Range_bCANV.pdf)

Predicted Habitat Map Link: [http://www.basic.ncsu.edu/segap/datazip/maps/SE\\_Dist\\_bCANV.pdf](http://www.basic.ncsu.edu/segap/datazip/maps/SE_Dist_bCANV.pdf)

GAP Online Tool Link: <http://www.gapservice.ncsu.edu/segap/segap/index2.php?species=bCANV>

Data Download: [http://www.basic.ncsu.edu/segap/datazip/region/vert/bCANV\\_se00.zip](http://www.basic.ncsu.edu/segap/datazip/region/vert/bCANV_se00.zip)

#### PROTECTION STATUS:

Reported on March 14, 2011

Federal Status: ---

State Status: AL (GB), CA (None), ID (G), KY (N), ND (Level II), NV (YES), NY (PB - GS), RI (Not Listed), UT (None), WI (SC/M), WI (SC/M), BC (4 (2005)), QC (Non suivie)

NS Global Rank: G5

NS State Rank: AK (S4B), AL (S4N), AR (S4N), AZ (S1B,S4N), CA (S2?), CO (S2B), CO (S2B), CT (SNA), DC (S1N), DE (S2N), FL (SNRN), GA (S4), IA (S2B,S4N), ID (S4B,S2N), IL (SNA), IN (SNA), KS (S3N), KY (S3N), LA (S4N), MA (S3N), MD (S3S4N), ME (SNA), MI (SNRN), MN (SNRB,SNRM), MO (SNRN,SNRM), MS (S3S4N), MT (S5B), MT (S5B), NC (S3N), ND (SNRB), NE (S2), NH (SNA), NJ (SNA), NM (S4B,S4N), NV (S3S4), NY (SNRN), OH (SNRN), OK (S4N), OR (S4), PA (S3S4N), RI (SNA), SC (S4), SD (S4B), SD (S4B), TN (S3S4N), TX (S4), UT (S2S3B,S3N), VA (SNRN), VT (S3N), WA (S3B,S4N), WI (S3N), WI (S3N), WV (S2N), WY (S4B), WY (S4B), AB (S4), BC (S4B), MB (S4B), MB (S4B), NB (SNA), NF (SNA), NS (SNA), NT (SNRB), ON (S1B,S4N), ON (S1B,S4N), PE (SNA), QC (S4M), SK (S5B,S5M,S2N), YT (S5B)

**SUMMARY OF PREDICTED HABITAT BY MANAGMENT AND GAP PROTECTION STATUS:**

	US FWS		US Forest Service		Tenn. Valley Author.		US DOD/ACOE	
	ha	%	ha	%	ha	%	ha	%
Status 1	472.9	10	0.0	0	0.0	0	0.0	0
Status 2	433.1	9	0.0	0	0.0	0	0.0	0
Status 3	27.4	< 1	0.0	0	0.0	0	140.5	3
Status 4	0.0	0	0.0	0	0.0	0	0.0	0
Total	933.3	20	0.0	0	0.0	0	140.5	3
	US Dept. of Energy		US Nat. Park Service		NOAA		Other Federal Lands	
	ha	%	ha	%	ha	%	ha	%
Status 1	0.0	0	0.0	0	59.9	1	0.0	0
Status 2	0.0	0	602.6	13	0.0	0	0.0	0
Status 3	0.0	0	0.0	0	0.0	0	0.0	0
Status 4	0.0	0	0.0	0	0.0	0	0.0	0
Total	0.0	0	602.6	13	59.9	1	0.0	0
	Native Am. Reserv.		State Park/Hist. Park		State WMA/Gameland		State Forest	
	ha	%	ha	%	ha	%	ha	%
Status 1	0.0	0	0.0	0	0.0	0	0.0	0
Status 2	0.0	0	0.0	0	32.4	< 1	0.0	0
Status 3	0.0	0	31.1	< 1	158.0	3	0.0	0
Status 4	0.0	0	0.0	0	0.0	0	0.0	0
Total	0.0	0	31.1	< 1	190.4	4	0.0	0
	State Coastal Reserve		ST Nat.Area/Preserve		Other State Lands		Private Cons. Easemt.	
	ha	%	ha	%	ha	%	ha	%
Status 1	0.0	0	0.0	0	0.0	0	0.0	0
Status 2	91.1	2	0.0	0	0.0	0	0.0	0
Status 3	0.0	0	0.0	0	0.0	0	0.0	0
Status 4	0.0	0	0.0	0	0.0	0	0.0	0
Total	91.1	2	0.0	0	0.0	0	0.0	0
	Private Land - No Res.		Water		Overall Total			
	ha	%	ha	%	ha	%	ha	%
Status 1	0.0	0	0.0	0	532.8 11			
Status 2	0.0	0	0.0	0	1,159.2 25			
Status 3	0.0	0	0.0	0	356.9 7			
Status 4	2,403.3	51	245.7	5	2,649.0 57			
Total	2,403.3	51	245.7	5	4,697.8 100			

GAP Status 1: An area having permanent protection from conversion of natural land cover and a mandated management plan in operation to maintain a natural state within which disturbance events (of natural type, frequency, and intensity) are allowed to proceed without interference or are mimicked through management.

GAP Status 2: An area having permanent protection from conversion of natural land cover and a mandated management plan in operation to maintain a primarily natural state, but which may receive use or management practices that degrade the quality of existing natural communities.

GAP Status 3: An area having permanent protection from conversion of natural land cover for the majority of the area, but subject to extractive uses of either a broad, low-intensity type or localized intense type. It also confers protection to federally listed endangered and threatened species throughout the area.

GAP Status 4: Lack of irrevocable easement or mandate to prevent conversion of natural habitat types to anthropogenic habitat types. Allows for intensive use throughout the tract. Also includes those tracts for which the existence of such restrictions or sufficient information to establish a higher status is unknown.

## PREDICTED HABITAT MODEL(S):

### Winter Model:

Habitat Description: A common winter resident, canvasbacks inhabit a wide range of habitats, including deep freshwater lakes, brackish and salt-water estuaries, shallow bays and harbors, and rivers (Mowbray 2002). During the nonbreeding season this species preferred food is buds and roots of submerged plants in shallow waters, however the canvasback is an adept diver and will submerge to feed on benthic invertebrates as well (Mowbray 2002). Amy Silvano 05sept05

Ecosystem classifiers: Primarily aquatic only indicated open water, then accept all Mus that fall within hydro buffer. Amy Silvano 05sept05

### Hydrography Mask:

Utilizes flowing water features with buffers of 30m from and unlimited into selected water features.

Utilizes open water features with buffers of 30m from and unlimited into selected water features.

### Selected Map Units:

Functional Group	Map Unit Name
Water	Open Water (Brackish/Salt)
Water	Open Water (Fresh)

- CITATIONS:** American Ornithologists' Union (AOU), Committee on Classification and Nomenclature. 1983. Check-list of North American Birds. Sixth Edition. American Ornithologists' Union, Allen Press, Inc., Lawrence, Kansas.
- Bellrose, F.C. 1976. Ducks, geese and swans of North America. Stackpole Books, Harrisburg, Pa.
- Di Silvestro, R. L., editor. 1986. Audubon wildlife report 1986. National Audubon Society, New York. 1094 pp. [available from Academic Press, San Diego, CA].
- Ehrlich, P.R., D.S. Dobkin, and D. Wheye. 1992. Birds in jeopardy: the imperiled and extinct birds of the United States and Canada, including Hawaii and Puerto Rico. Stanford University Press, Stanford, California. 259 pp.
- Harrison, C. 1978. A field guide to the nests, eggs and nestlings of North American birds. Collins, Cleveland, Ohio.
- Hochbaum, H. A. 1944. The canvasback on a prairie marsh. Am. Wildlife Inst., Washington, D.C. 201 pp. [also reissued by Univ. Nebraska Press in 1981].
- Johnson, S.R., and D.R. Herter. 1989. The birds of the Beaufort Sea. BP Exploration (Alaska) Inc., Anchorage, Alaska. 372 pp.
- Marcy, L. E. 1986. Waterfowl nest baskets. Section 5.1.3, US Army Corps of Engineers Wildlife Resources Management Manual. Tech. Rep. EL-86-15. Waterways Expt. Station, Vicksburg, Mississippi. 16 pp.
- Miles, A. K., and H. M. Ohlendorf. 1993. Environmental contaminants in canvasbacks wintering on San Francisco Bay, California. California Fish & Game 79:28-38.
- Mowbray, T. 2002. Canvasback (*Aythya valisineria*). In The Birds of North America, No.659 (A. Poole and F. Gill, eds.). The Birds of North America, Inc., Philadelphia, PA.
- Root, T. 1988. Atlas of wintering North American birds: An analysis of Christmas Bird Count data. University of Chicago Press. 336 pp.
- Serie, J. R., and L. M. Cowardin. 1990. Use of social indices to predict reproductive success in canvasbacks. J. Wildl. Manage. 54:66-72.
- Serie, J. R., D. L. Trauger, and D. E. Sharp. 1983. Migration and winter distribution of canvasbacks staging on the upper Mississippi River. J. Wildl. Manage. 47:741-753.
- Stoult, J. H. 1982. Habitat use and productivity of canvasbacks in southwestern Manitoba, 1961-72. U.S. Fish and Wildl. Serv., Spec. Sci. Rep. No. 248. 31 pp.
- Terres, J.K. 1980. The Audubon Society encyclopedia of North American birds. Alfred A. Knopf, New York.
- U.S. Fish & Wildl. Serv. 1988. SEIS 88. Final supplemental environmental impact statement: issuance of annual regulations permitting the sport hunting of migratory birds. x + 340 pp.