



SOUTHEAST GAP ANALYSIS PROJECT



Species Modeling Report

Black Vulture

Coragyps atratus

Taxa: Avian

Order: Falconiformes

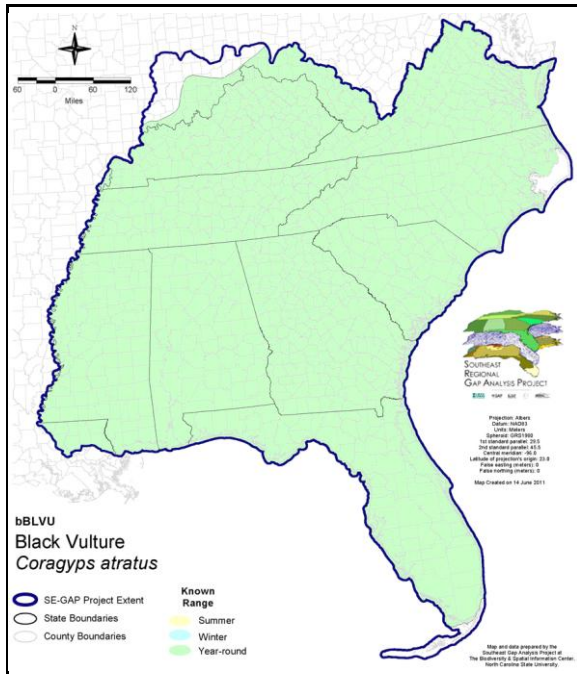
Family: Cathartidae

SE-GAP Spp Code: **bBLVU**

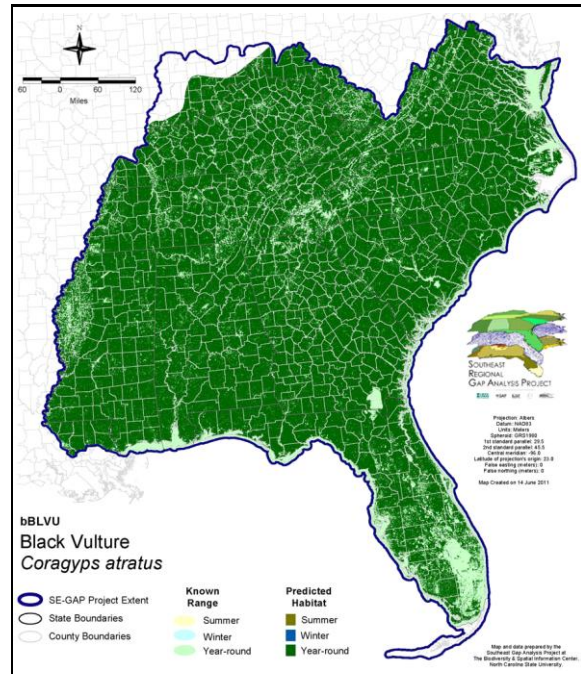
ITIS Species Code: 175272

NatureServe Element Code: ABNKA01010

KNOWN RANGE:



PREDICTED HABITAT:



Range Map Link: http://www.basic.ncsu.edu/segap/datazip/maps/SE_Range_bBLVU.pdf

Predicted Habitat Map Link: http://www.basic.ncsu.edu/segap/datazip/maps/SE_Dist_bBLVU.pdf

GAP Online Tool Link: <http://www.gapservice.ncsu.edu/segap/segap/index2.php?species=bBLVU>

Data Download: http://www.basic.ncsu.edu/segap/datazip/region/vert/bBLVU_se00.zip

PROTECTION STATUS:

Reported on March 14, 2011

Federal Status: ---

State Status: KY (N), NJ (INC/S), NY (PB), OH (SC), RI (Not Listed), BC (8 (2005)), QC (Non suivie)

NS Global Rank: G5

NS State Rank: AL (S4B), AR (S4), AZ (S1S2), CT (SNA), DC (S1), DE (S2B), FL (SNR), GA (S5), IL (S3), IN (S1N,S2B), KS (SNA), KY (S4B,S3S4N), LA (S5), MA (S1B,S2N), MD (S4B,S4N), ME (SNA), MI (SNA), MO (S3), MS (S4B), NC (S4), NH (SNA), NJ (S5B,S5N), NM (SNA), NY (SNRN), OH (S2), OK (S2B), PA (S4B), RI (SNR), SC (SNR), TN (S4B), TX (S5B), VA (S4), VT (SNA), WI (SNA), WV (S3B,S4N), BC (SNA), LB (SNA), NB (SNA), NS (SNA), ON (SNA), PE (SNA), QC (SNA), SK (SNA), YT (SNA)

SUMMARY OF PREDICTED HABITAT BY MANAGMENT AND GAP PROTECTION STATUS:

	US FWS		US Forest Service		Tenn. Valley Author.		US DOD/ACOE	
	ha	%	ha	%	ha	%	ha	%
Status 1	140,226.1	< 1	25,358.3	< 1	0.0	0	0.0	0
Status 2	265,753.5	< 1	282,588.1	< 1	0.0	0	6,042.6	< 1
Status 3	4,333.3	< 1	2,364,999.2	2	83,668.1	< 1	870,583.7	< 1
Status 4	120.1	< 1	< 0.1	< 1	0.0	0	152.4	< 1
Total	410,433.0	< 1	2,672,945.7	3	83,668.1	< 1	876,778.7	< 1
	US Dept. of Energy		US Nat. Park Service		NOAA		Other Federal Lands	
	ha	%	ha	%	ha	%	ha	%
Status 1	0.0	0	369,308.2	< 1	734.8	< 1	16,556.6	< 1
Status 2	0.0	0	25,093.5	< 1	36,235.9	< 1	101.2	< 1
Status 3	87,649.9	< 1	366,761.3	< 1	0.0	0	6,999.1	< 1
Status 4	0.0	0	0.0	4	0.0	0	0.0	0
Total	87,649.9	< 1	761,163.4	< 1	36,970.7	< 1	23,656.9	< 1
	Native Am. Reserv.		State Park/Hist. Park		State WMA/Gameland		State Forest	
	ha	%	ha	%	ha	%	ha	%
Status 1	0.0	0	1,636.5	< 1	81.6	< 1	0.0	0
Status 2	0.0	0	12,288.5	< 1	885,315.6	< 1	1,045.9	< 1
Status 3	22,838.9	< 1	766,226.2	< 1	263,270.3	< 1	462,129.3	< 1
Status 4	0.0	0	< 0.1	< 1	142,115.0	< 1	49.1	< 1
Total	22,838.9	< 1	780,151.2	< 1	1,290,782.4	1	463,224.2	< 1
	State Coastal Reserve		ST Nat.Area/Preserve		Other State Lands		Private Cons. Easemt.	
	ha	%	ha	%	ha	%	ha	%
Status 1	0.0	0	13,357.5	< 1	0.0	0	0.0	0
Status 2	23,821.8	< 1	98,371.9	< 1	7.0	< 1	4,254.8	< 1
Status 3	0.0	0	30,357.1	< 1	40,995.4	< 1	174,539.1	< 1
Status 4	0.0	0	1.0	< 1	5,647.2	< 1	< 0.1	< 1
Total	23,821.8	< 1	142,087.5	< 1	46,649.6	< 1	178,793.9	< 1
	Private Land - No Res.		Water		Overall Total			
	ha	%	ha	%	ha	%		
Status 1	0.0	0	0.0	0	567,259.6	< 1		
Status 2	0.0	0	0.0	9	1,640,920.4	2		
Status 3	1,194.7	< 1	1.2	< 1	5,546,546.6	8		
Status 4	88,866,532.4	89	101,164.0	< 1	89,257,776.6	90		
Total	88,867,727.0	89	101,165.2	< 1	97,012,503.2	100		

GAP Status 1: An area having permanent protection from conversion of natural land cover and a mandated management plan in operation to maintain a natural state within which disturbance events (of natural type, frequency, and intensity) are allowed to proceed without interference or are mimicked through management.

GAP Status 2: An area having permanent protection from conversion of natural land cover and a mandated management plan in operation to maintain a primarily natural state, but which may receive use or management practices that degrade the quality of existing natural communities.

GAP Status 3: An area having permanent protection from conversion of natural land cover for the majority of the area, but subject to extractive uses of either a broad, low-intensity type or localized intense type. It also confers protection to federally listed endangered and threatened species throughout the area.

GAP Status 4: Lack of irrevocable easement or mandate to prevent conversion of natural habitat types to anthropogenic habitat types. Allows for intensive use throughout the tract. Also includes those tracts for which the existence of such restrictions or sufficient information to establish a higher status is unknown.

PREDICTED HABITAT MODEL(S):

Year-round Model:

Habitat Description: Black vultures search for and feed on carrion more in open habitat types including urban areas (Palmer 1988). They breed in dense woodlands and do not build a nest but lay eggs in sheltered and dark areas of woodlands (Palmer 1988, Buckley 1999), and potentially far from human traffic (NC-citation needed).

More specifically, they are common at lower elevations and they are absent from or rare in mountains (Hamel 1992). They are especially common in remote, swampy areas and particularly wooded farmlands (NC). They do feed in urban habitats as well.

Nest site requirements reported by Nicholson (1997) lists laying sites as having included: dead trees and stumps, crevices among rocks on the ground, under rock ledges, in caves. They can nest in thickets in vegetation (Hamel 1992) and sometimes in abandoned buildings (Kaufman 1996).

Regarding spatial habitat characteristics, in southern Pennsylvania and northern Maryland the mean home range was 14,881 ha (using the convex polygon). The summer home range was 15,962 ha, the winter home range was 7,729 ha, and the breeding home range was 15,374 ha (Coleman & Fraser 1989).

Quoted directly from existing state habitat notes - K. Cook, 9Feb05

Elevation Mask: < 1300m

Mask of Forest/Open Ecotone: Include within 500m of ecotone edge.

Mask of Woodlands and Shrublands: Include all woodland and shrubland interiors and 500m buffer from them.

Selected Map Units:

Functional Group	Map Unit Name
Anthropogenic	Bare Sand
Anthropogenic	Bare Soil
Anthropogenic	Deciduous Plantations
Anthropogenic	Developed Open Space
Anthropogenic	Evergreen Plantations
Anthropogenic	Low Intensity Developed
Anthropogenic	Pasture/Hay
Anthropogenic	Quarry/Strip Mine/Gravel Pit
Anthropogenic	Row Crop
Anthropogenic	Successional Grassland/Herbaceous
Anthropogenic	Successional Grassland/Herbaceous (Other)
Anthropogenic	Successional Grassland/Herbaceous (Utility Swath)
Anthropogenic	Successional Shrub/Scrub (Clear Cut)
Anthropogenic	Successional Shrub/Scrub (Other)
Anthropogenic	Successional Shrub/Scrub (Utility Swath)
Brackish Tidal Marsh & Wetland	Atlantic Coastal Plain Central Salt and Brackish Tidal Marsh
Brackish Tidal Marsh & Wetland	Atlantic Coastal Plain Embayed Region Tidal Salt and Brackish Marsh
Brackish Tidal Marsh & Wetland	Atlantic Coastal Plain Indian River Lagoon Tidal Marsh
Brackish Tidal Marsh & Wetland	Atlantic Coastal Plain Northern Sea-Level Fen
Brackish Tidal Marsh & Wetland	Atlantic Coastal Plain Northern Tidal Salt Marsh
Brackish Tidal Marsh & Wetland	Atlantic Coastal Plain Northern Tidal Wooded Swamp
Brackish Tidal Marsh & Wetland	Atlantic Coastal Plain Southern Tidal Wooded Swamp
Brackish Tidal Marsh & Wetland	East Gulf Coastal Plain Tidal Wooded Swamp
Brackish Tidal Marsh & Wetland	Florida Big Bend Salt-Brackish Tidal Marsh
Brackish Tidal Marsh & Wetland	Mississippi Sound Salt and Brackish Tidal Marsh
Brackish Tidal Marsh & Wetland	South Florida Everglades Sawgrass Marsh
Brackish Tidal Marsh & Wetland	South Florida Mangrove Swamp
Brackish Tidal Marsh & Wetland	Southwest Florida Perched Barriers Salt Swamp and Lagoon - Mangrove Modifier
Brackish Tidal Marsh & Wetland	Southwest Florida Perched Barriers Salt Swamp and Lagoon - Marsh Modifier

Forest/Woodland	Alabama Ketona Glade and Woodland
Forest/Woodland	Allegheny-Cumberland Dry Oak Forest and Woodland
Forest/Woodland	Allegheny-Cumberland Dry Oak Forest and Woodland - Hardwood Modifier
Forest/Woodland	Allegheny-Cumberland Dry Oak Forest and Woodland - Pine Modifier
Forest/Woodland	Appalachian Hemlock-Hardwood Forest
Forest/Woodland	Appalachian Serpentine Woodland
Forest/Woodland	Appalachian Shale Barrens
Forest/Woodland	Atlantic Coastal Plain Dry and Dry-Mesic Oak Forest
Forest/Woodland	Atlantic Coastal Plain Fall-Line Sandhills Longleaf Pine Woodland - Loblolly Modifier
Forest/Woodland	Atlantic Coastal Plain Fall-line Sandhills Longleaf Pine Woodland - Offsite Hardwood Modifier
Forest/Woodland	Atlantic Coastal Plain Fall-line Sandhills Longleaf Pine Woodland - Open Understory Modifier
Forest/Woodland	Atlantic Coastal Plain Fall-line Sandhills Longleaf Pine Woodland - Scrub/Shrub Understory Modifier
Forest/Woodland	Atlantic Coastal Plain Mesic Hardwood and Mixed Forest
Forest/Woodland	Atlantic Coastal Plain Northern Mixed Oak-Heath Forest
Forest/Woodland	Atlantic Coastal Plain Upland Longleaf Pine Woodland
Forest/Woodland	Central Appalachian Alkaline Glade and Woodland
Forest/Woodland	Central Appalachian Oak and Pine Forest
Forest/Woodland	Central Appalachian Pine-Oak Rocky Woodland
Forest/Woodland	Central Interior Highlands Calcareous Glade and Barrens
Forest/Woodland	Central Interior Highlands Dry Acidic Glade and Barrens
Forest/Woodland	Cumberland Sandstone Glade and Barrens
Forest/Woodland	East Gulf Coastal Plain Black Belt Calcareous Prairie and Woodland - Woodland Modifier
Forest/Woodland	East Gulf Coastal Plain Interior Shortleaf Pine-Oak Forest - Hardwood Modifier
Forest/Woodland	East Gulf Coastal Plain Interior Shortleaf Pine-Oak Forest - Mixed Modifier
Forest/Woodland	East Gulf Coastal Plain Interior Shortleaf Pine-Oak Forest - Pine Modifier
Forest/Woodland	East Gulf Coastal Plain Interior Upland Longleaf Pine Woodland - Loblolly Modifier
Forest/Woodland	East Gulf Coastal Plain Interior Upland Longleaf Pine Woodland - Offsite Hardwood Modifier
Forest/Woodland	East Gulf Coastal Plain Interior Upland Longleaf Pine Woodland - Open Understory Modifier
Forest/Woodland	East Gulf Coastal Plain Interior Upland Longleaf Pine Woodland - Scrub/Shrub Modifier
Forest/Woodland	East Gulf Coastal Plain Limestone Forest
Forest/Woodland	East Gulf Coastal Plain Northern Dry Upland Hardwood Forest
Forest/Woodland	East Gulf Coastal Plain Northern Dry Upland Hardwood Forest - Offsite Pine Modifier
Forest/Woodland	East Gulf Coastal Plain Northern Loess Bluff Forest
Forest/Woodland	East Gulf Coastal Plain Northern Loess Plain Oak-Hickory Upland - Hardwood Modifier
Forest/Woodland	East Gulf Coastal Plain Northern Loess Plain Oak-Hickory Upland - Juniper Modifier
Forest/Woodland	East Gulf Coastal Plain Northern Mesic Hardwood Forest
Forest/Woodland	East Gulf Coastal Plain Southern Loess Bluff Forest
Forest/Woodland	East Gulf Coastal Plain Southern Mesic Slope Forest
Forest/Woodland	Florida Longleaf Pine Sandhill - Open Understory Modifier
Forest/Woodland	Florida Longleaf Pine Sandhill - Scrub/Shrub Understory Modifier
Forest/Woodland	Florida Peninsula Inland Scrub
Forest/Woodland	Nashville Basin Limestone Glade
Forest/Woodland	Northeastern Interior Dry Oak Forest - Mixed Modifier
Forest/Woodland	Northeastern Interior Dry Oak Forest - Virginia/Pitch Pine Modifier
Forest/Woodland	Northeastern Interior Dry Oak Forest-Hardwood Modifier
Forest/Woodland	Northern Atlantic Coastal Plain Dry Hardwood Forest
Forest/Woodland	Ridge and Valley Calcareous Valley Bottom Glade and Woodland
Forest/Woodland	South Florida Pine Rockland
Forest/Woodland	South-Central Interior Mesophytic Forest
Forest/Woodland	Southeastern Interior Longleaf Pine Woodland
Forest/Woodland	Southern and Central Appalachian Cove Forest
Forest/Woodland	Southern and Central Appalachian Mafic Glade and Barrens
Forest/Woodland	Southern and Central Appalachian Oak Forest
Forest/Woodland	Southern and Central Appalachian Oak Forest - Xeric
Forest/Woodland	Southern Appalachian Low Mountain Pine Forest
Forest/Woodland	Southern Coastal Plain Dry Upland Hardwood Forest

Forest/Woodland	Southern Coastal Plain Oak Dome and Hammock
Forest/Woodland	Southern Interior Low Plateau Dry-Mesic Oak Forest
Forest/Woodland	Southern Interior Low Plateau Dry-Mesic Oak Forest - Evergreen Modifier
Forest/Woodland	Southern Piedmont Dry Oak-(Pine) Forest - Hardwood Modifier
Forest/Woodland	Southern Piedmont Dry Oak-(Pine) Forest - Loblolly Pine Modifier
Forest/Woodland	Southern Piedmont Dry Oak-(Pine) Forest - Mixed Modifier
Forest/Woodland	Southern Piedmont Dry Oak-Heath Forest - Hardwood Modifier
Forest/Woodland	Southern Piedmont Dry Oak-Heath Forest - Mixed Modifier
Forest/Woodland	Southern Piedmont Dry Oak-Heath Forest - Virginia/Pitch Pine Modifier
Forest/Woodland	Southern Piedmont Glade and Barrens
Forest/Woodland	Southern Piedmont Mafic Hardpan Woodland
Forest/Woodland	Southern Piedmont Mesic Forest
Forest/Woodland	Southern Piedmont Northern Triassic Basin Dry Forest
Forest/Woodland	Southern Ridge and Valley Dry Calcareous Forest
Forest/Woodland	Southern Ridge and Valley Dry Calcareous Forest - Hardwood Modifier
Forest/Woodland	Southern Ridge and Valley Dry Calcareous Forest - Pine Modifier
Freshwater Tidal Marsh & Wetland	Atlantic Coastal Plain Central Fresh-Oligohaline Tidal Marsh
Freshwater Tidal Marsh & Wetland	Atlantic Coastal Plain Embayed Region Tidal Freshwater Marsh
Freshwater Tidal Marsh & Wetland	Atlantic Coastal Plain Northern Fresh and Oligohaline Tidal Marsh
Freshwater Tidal Marsh & Wetland	Florida Big Bend Fresh-Oligohaline Tidal Marsh
Prairie	Bluegrass Basin Savanna and Woodland
Prairie	East Gulf Coastal Plain Black Belt Calcareous Prairie and Woodland
Prairie	East Gulf Coastal Plain Black Belt Calcareous Prairie and Woodland - Herbaceous Modifier
Prairie	East Gulf Coastal Plain Jackson Plain Prairie and Barrens
Prairie	East Gulf Coastal Plain Jackson Prairie and Woodland
Prairie	Eastern Highland Rim Prairie and Barrens
Prairie	Eastern Highland Rim Prairie and Barrens - Dry Modifier
Prairie	Florida Dry Prairie
Prairie	Panhandle Florida Limestone Glade
Prairie	Pennyroyal Karst Plain Prairie and Barrens
Prairie	Southern Ridge and Valley Patch Prairie
Prairie	Western Highland Rim Prairie and Barrens
Wetlands	Atlantic Coastal Plain Blackwater Stream Floodplain Forest - Forest Modifier
Wetlands	Atlantic Coastal Plain Brownwater Stream Floodplain Forest
Wetlands	Atlantic Coastal Plain Clay-Based Carolina Bay Forested Wetland
Wetlands	Atlantic Coastal Plain Clay-Based Carolina Bay Herbaceous Wetland
Wetlands	Atlantic Coastal Plain Depression Pondshore
Wetlands	Atlantic Coastal Plain Large Natural Lakeshore
Wetlands	Atlantic Coastal Plain Nonriverine Swamp and Wet Hardwood Forest - Taxodium/Nyssa Modifier
Wetlands	Atlantic Coastal Plain Nonriverine Swamp and Wet Hardwood Forest - Oak Dominated Modifier
Wetlands	Atlantic Coastal Plain Northern Basin Peat Swamp
Wetlands	Atlantic Coastal Plain Northern Basin Swamp and Wet Hardwood Forest
Wetlands	Atlantic Coastal Plain Northern Pondshore
Wetlands	Atlantic Coastal Plain Northern Wet Longleaf Pine Savanna and Flatwoods
Wetlands	Atlantic Coastal Plain Peatland Pocosin
Wetlands	Atlantic Coastal Plain Sandhill Seep
Wetlands	Atlantic Coastal Plain Small Blackwater River Floodplain Forest
Wetlands	Atlantic Coastal Plain Small Brownwater River Floodplain Forest
Wetlands	Atlantic Coastal Plain Southern Wet Pine Savanna and Flatwoods
Wetlands	Atlantic Coastal Plain Streamhead Seepage Swamp, Pocosin, and Baygall
Wetlands	Atlantic Coastal Plain Xeric River Dune
Wetlands	Central Appalachian Floodplain - Forest Modifier
Wetlands	Central Appalachian Riparian - Forest Modifier
Wetlands	Central Florida Herbaceous Pondshore
Wetlands	Central Florida Herbaceous Seep
Wetlands	Central Florida Pine Flatwoods

Wetlands	Central Interior Highlands and Appalachian Sinkhole and Depression Pond
Wetlands	Cumberland Riverscour
Wetlands	East Gulf Coastal Plain Interior Shrub Bog
Wetlands	East Gulf Coastal Plain Jackson Plain Dry Flatwoods - Open Understory Modifier
Wetlands	East Gulf Coastal Plain Jackson Plain Dry Flatwoods - Scrub/Shrub Understory Modifier
Wetlands	East Gulf Coastal Plain Large River Floodplain Forest - Forest Modifier
Wetlands	East Gulf Coastal Plain Near-Coast Pine Flatwoods - Offsite Hardwood Modifier
Wetlands	East Gulf Coastal Plain Near-Coast Pine Flatwoods - Open Understory Modifier
Wetlands	East Gulf Coastal Plain Near-Coast Pine Flatwoods - Scrub/Shrub Understory Modifier
Wetlands	East Gulf Coastal Plain Northern Depression Pondshore
Wetlands	East Gulf Coastal Plain Northern Seepage Swamp
Wetlands	East Gulf Coastal Plain Small Stream and River Floodplain Forest
Wetlands	East Gulf Coastal Plain Southern Depression Pondshore
Wetlands	East Gulf Coastal Plain Southern Loblolly-Hardwood Flatwoods
Wetlands	East Gulf Coastal Plain Treeless Savanna and Wet Prairie
Wetlands	Floridian Highlands Freshwater Marsh
Wetlands	Lower Mississippi River Bottomland and Floodplain Forest
Wetlands	Lower Mississippi River Bottomland Depressions - Forest Modifier
Wetlands	Mississippi River Low Floodplain (Bottomland) Forest
Wetlands	Mississippi River Riparian Forest
Wetlands	North-Central Appalachian Acidic Swamp
Wetlands	North-Central Appalachian Seepage Fen
Wetlands	North-Central Interior and Appalachian Rich Swamp
Wetlands	South Florida Bayhead Swamp
Wetlands	South Florida Cypress Dome
Wetlands	South Florida Freshwater Slough and Gator Hole
Wetlands	South Florida Hardwood Hammock
Wetlands	South Florida Pine Flatwoods
Wetlands	South Florida Pond-Apple/Popash Slough
Wetlands	South Florida Wet Marl Prairie
Wetlands	South Florida Willow Head
Wetlands	South-Central Interior Large Floodplain - Forest Modifier
Wetlands	South-Central Interior Small Stream and Riparian
Wetlands	South-Central Interior/Upper Coastal Plain Wet Flatwoods
Wetlands	Southern and Central Appalachian Bog and Fen
Wetlands	Southern Appalachian Seepage Wetland
Wetlands	Southern Coastal Plain Blackwater River Floodplain Forest
Wetlands	Southern Coastal Plain Herbaceous Seepage Bog
Wetlands	Southern Coastal Plain Hydric Hammock
Wetlands	Southern Coastal Plain Nonriverine Basin Swamp
Wetlands	Southern Coastal Plain Nonriverine Cypress Dome
Wetlands	Southern Coastal Plain Seepage Swamp and Baygall
Wetlands	Southern Coastal Plain Spring-run Stream Aquatic Vegetation
Wetlands	Southern Piedmont Large Floodplain Forest - Forest Modifier
Wetlands	Southern Piedmont Seepage Wetland
Wetlands	Southern Piedmont Small Floodplain and Riparian Forest
Wetlands	Southern Piedmont/Ridge and Valley Upland Depression Swamp
Wetlands	Unconsolidated Shore (Lake/River/Pond)
Wetlands	Western Highland Rim Seepage Fen

CITATIONS: American Ornithologists' Union (AOU), Committee on Classification and Nomenclature. 1983. Check-list of North American Birds. Sixth Edition. American Ornithologists' Union, Allen Press, Inc., Lawrence, Kansas.

Bent, A.C. 1937. Life histories of North American birds of prey. Part 1. Bull. U.S. Natl. Mus. 137. 409 pp.

Brown, L. and D. Amadon. 1968. Eagles, Hawks, and Falcons of the World. McGraw-Hill, NY.

- Buckley, N. J. 1999. Black Vulture (*Coragyps atratus*). In *The Birds of North America*, No. 411 (A. Poole and F. Gill, eds.). The Birds of North America, Inc., Philadelphia, PA
- Coleman, J. S., and J. D. Fraser. 1987. Food habits of black and turkey vultures in Pennsylvania and Maryland. *J. Wildl. Manage.* 51:733-739.
- Coleman, J. S., and J. D. Fraser. 1989. Habitat use and home ranges of black and turkey vultures. *J. Wildl. Manage.* 53:782-792.
- Ehrlich, P.R., D.S. Dobkin, and D. Wheye. 1988. *The birder's handbook: a field guide to the natural history of North American birds*. Simon and Shuster, Inc., New York. xxx + 785 pp.
- Ehrlich, P.R., D.S. Dobkin, and D. Wheye. 1992. *Birds in jeopardy: the imperiled and extinct birds of the United States and Canada, including Hawaii and Puerto Rico*. Stanford University Press, Stanford, California. 259 pp.
- Hamel, P. B. 1992. *The land manager's guide to the birds of the south*. The Nature Conservancy, Chapel Hill, North Carolina. 367 pp + several appendices.
- Harrison, H.H. 1979. *A field guide to western birds' nests*. Houghton Mifflin Company, Boston. 279 pp.
- Jackson, J. A. 1983. Nesting phenology, nest site selection, and reproductive success of black and turkey vultures. Pages 245-270 in Wilbur, S. R., and J. A. Jackson, eds. *Vulture biology and management*. Univ. Calif. Press.
- Kaufman K. 1996. *Lives of North American Birds*. Boston, New York: Houghton Mifflin Company.
- National Geographic Society (NGS). 1983. *Field guide to the birds of North America*. National Geographic Society, Washington, D.C.
- Nicholson CP. 1997. *Atlas of the breeding birds of Tennessee*. Knoxville: University of Tennessee Press.
- Palmer, R. S., editor. 1988. *Handbook of North American birds*. Vol. 4. [Diurnal raptors, part 1]. Yale University Press, New Haven. vii + 433 pp.
- Pendleton, B. A. Giron, et al. 1987. *Raptor management techniques manual*. National Wildlife Federation, Sci. and Tech. Ser. No. 10. 420 pp.
- Rabenold, P. P. 1986. Family associations in communally roosting black vultures. *Auk* 103:32-41.
- Root, T. 1988. *Atlas of wintering North American birds: An analysis of Christmas Bird Count data*. University of Chicago Press. 336 pp.
- Stiles, F.G., and A.F. Skutch. 1989. *A guide to the birds of Costa Rica*. Comstock Publ. Associates, Cornell University Press, Ithaca, New York. 511 pp.
- Terres, J.K. 1980. *The Audubon Society encyclopedia of North American birds*. Alfred A. Knopf, New York.
- Wallace, M. P., and S. A. Temple. 1983. An evaluation of techniques for releasing hand-reared vultures to the wild. Pp. 400-423 in Wilbur, S. R., and J. A. Jackson, eds. *Vulture biology and management*. Univ. California Press.
- Wilbur, S. R. 1983. The status of vultures in the western hemisphere. Pages 113-123 in Wilbur, S. R., and J. A. Jackson, eds. *Vulture biology and management*. Univ. California Press, Berkeley.
- Wilbur, S. R., and J. A. Jackson, eds. 1983. *Vulture biology and management*. Univ. California Press, Berkeley. xxii + 550 pp.
- Wright, A. L., R. H. Yahner, and G. L. Storm. 1986. Roost-tree characteristics and abundance of wintering vultures at a communal roost in south central Pennsylvania. *Raptor Research* 20(3/4):102-107.

For more information:: SE-GAP Analysis Project / BaSIC
 127 David Clark Labs
 Dept. of Biology, NCSU
 Raleigh, NC 27695-7617
 (919) 513-2853
www.basic.ncsu.edu/segap

Compiled: 15 September 2011

This data was compiled and/or developed by the Southeast GAP Analysis Project at The Biodiversity and Spatial Information Center, North Carolina State University.