



# SOUTHEAST GAP ANALYSIS PROJECT



## Species Modeling Report

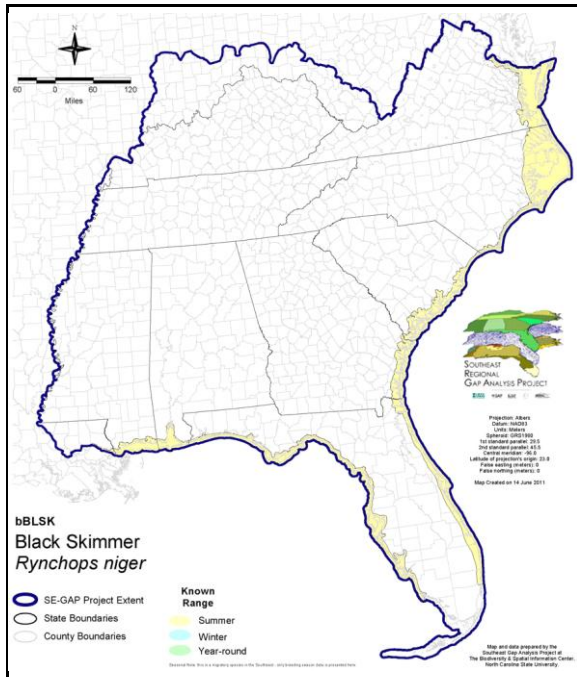
### Black Skimmer

*Rynchops niger*

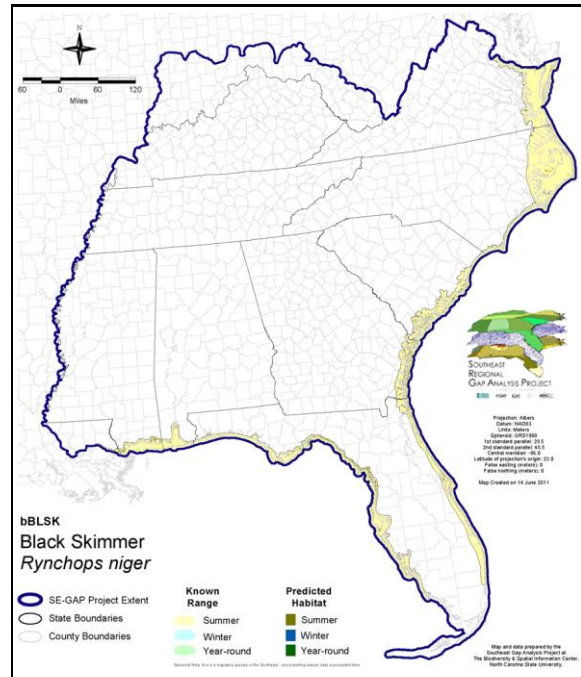
Taxa: Avian  
 Order: Charadriiformes  
 Family: Laridae

SE-GAP Spp Code: **bBLSK**  
 ITIS Species Code: 554447  
 NatureServe Element Code: ABNNM14010

#### KNOWN RANGE:



#### PREDICTED HABITAT:



Range Map Link: [http://www.basic.ncsu.edu/segap/datazip/maps/SE\\_Range\\_bBLSK.pdf](http://www.basic.ncsu.edu/segap/datazip/maps/SE_Range_bBLSK.pdf)

Predicted Habitat Map Link: [http://www.basic.ncsu.edu/segap/datazip/maps/SE\\_Dist\\_bBLSK.pdf](http://www.basic.ncsu.edu/segap/datazip/maps/SE_Dist_bBLSK.pdf)

GAP Online Tool Link: <http://www.gapservice.ncsu.edu/segap/segap/index2.php?species=bBLSK>

Data Download: [http://www.basic.ncsu.edu/segap/datazip/region/vert/bBLSK\\_se00.zip](http://www.basic.ncsu.edu/segap/datazip/region/vert/bBLSK_se00.zip)

#### PROTECTION STATUS:

Reported on March 14, 2011

Federal Status: ---

State Status: CA (None), DE (E), FL (SSC), GA (R), MA (- WL), MD (E), NC (SC), NJ (E), NY (SC), RI (Not Listed), QC (Non suivie)

NS Global Rank: G5

NS State Rank: AL (S1B,S4N), AR (SNA), AZ (SNA), CA (S1S3), CT (SNA), CT (SNA), DC (SNA), DE (S1B), FL (S3), GA (S1), IN (SNA), KS (SNA), LA (S5), MA (S1B,S1N), MD (S1B), ME (SNA), MI (SNA), MS (S3B,S3N), NC (S3B,S3N), NJ (S1B,S1N), NM (SNA), NV (SNA), NY (S2), PA (SNA), RI (S1N), SC (S2), TX (S4B), VA (S2B,S1N), NB (SNA), NF (SNA), NS (SNA), ON (SNA), PE (SNA), QC (SNA)

**SUMMARY OF PREDICTED HABITAT BY MANAGMENT AND GAP PROTECTION STATUS:**

|          | US FWS                 |     | US Forest Service     |     | Tenn. Valley Author. |     | US DOD/ACOE           |     |
|----------|------------------------|-----|-----------------------|-----|----------------------|-----|-----------------------|-----|
|          | ha                     | %   | ha                    | %   | ha                   | %   | ha                    | %   |
| Status 1 | 41,939.6               | 8   | 0.0                   | 0   | 0.0                  | 0   | 0.0                   | 0   |
| Status 2 | 21,574.9               | 4   | 55.2                  | < 1 | 0.0                  | 0   | 0.0                   | 0   |
| Status 3 | 612.5                  | < 1 | 333.8                 | < 1 | 0.0                  | 0   | 11,679.9              | 2   |
| Status 4 | 0.0                    | 0   | 0.0                   | 0   | 0.0                  | 0   | 4.9                   | < 1 |
| Total    | 64,127.1               | 12  | 389.0                 | < 1 | 0.0                  | 0   | 11,684.8              | 2   |
|          | US Dept. of Energy     |     | US Nat. Park Service  |     | NOAA                 |     | Other Federal Lands   |     |
|          | ha                     | %   | ha                    | %   | ha                   | %   | ha                    | %   |
| Status 1 | 0.0                    | 0   | 286.8                 | < 1 | 890.7                | < 1 | 3,620.3               | < 1 |
| Status 2 | 0.0                    | 0   | 30,017.5              | 5   | 21,298.0             | 4   | 0.0                   | 0   |
| Status 3 | 0.0                    | 0   | 1,368.5               | < 1 | 0.0                  | 0   | 0.0                   | 0   |
| Status 4 | 0.0                    | 0   | 2.0                   | 0   | 0.0                  | 0   | 0.0                   | 0   |
| Total    | 0.0                    | 0   | 31,675.3              | 6   | 22,188.7             | 4   | 3,620.3               | < 1 |
|          | Native Am. Reserv.     |     | State Park/Hist. Park |     | State WMA/Gameland   |     | State Forest          |     |
|          | ha                     | %   | ha                    | %   | ha                   | %   | ha                    | %   |
| Status 1 | 0.0                    | 0   | 1.4                   | < 1 | 0.0                  | 0   | 0.0                   | 0   |
| Status 2 | 0.0                    | 0   | 45.5                  | < 1 | 36,475.2             | 7   | 0.0                   | 0   |
| Status 3 | 0.0                    | 0   | 23,413.4              | 4   | 3,383.7              | < 1 | 1,242.2               | < 1 |
| Status 4 | 0.0                    | 0   | 0.0                   | 0   | 400.6                | < 1 | 0.0                   | 0   |
| Total    | 0.0                    | 0   | 23,460.3              | 4   | 40,259.5             | 7   | 1,242.2               | < 1 |
|          | State Coastal Reserve  |     | ST Nat.Area/Preserve  |     | Other State Lands    |     | Private Cons. Easemt. |     |
|          | ha                     | %   | ha                    | %   | ha                   | %   | ha                    | %   |
| Status 1 | 0.0                    | 0   | 348.5                 | < 1 | 0.0                  | 0   | 0.0                   | 0   |
| Status 2 | 21,209.6               | 4   | 16,154.6              | 3   | 0.0                  | 0   | 0.0                   | 0   |
| Status 3 | 0.0                    | 0   | 619.5                 | < 1 | 0.0                  | 0   | 261.5                 | < 1 |
| Status 4 | 0.0                    | 0   | 0.0                   | 0   | 4.4                  | < 1 | 0.0                   | 0   |
| Total    | 21,209.6               | 4   | 17,122.5              | 3   | 4.4                  | < 1 | 261.5                 | < 1 |
|          | Private Land - No Res. |     | Water                 |     | Overall Total        |     |                       |     |
|          | ha                     | %   | ha                    | %   | ha                   | %   |                       |     |
| Status 1 | 0.0                    | 3   | 0.0                   | 0   | 47,087.6 8           |     |                       |     |
| Status 2 | 0.8                    | < 1 | 0.0                   | 3   | 146,831.3 26         |     |                       |     |
| Status 3 | 96.1                   | < 1 | 0.0                   | 0   | 43,011.2 8           |     |                       |     |
| Status 4 | 309,314.0              | 56  | 8,570.6               | 2   | 318,697.6 57         |     |                       |     |
| Total    | 309,411.1              | 56  | 8,570.8               | 2   | 555,627.6 100        |     |                       |     |

GAP Status 1: An area having permanent protection from conversion of natural land cover and a mandated management plan in operation to maintain a natural state within which disturbance events (of natural type, frequency, and intensity) are allowed to proceed without interference or are mimicked through management.

GAP Status 2: An area having permanent protection from conversion of natural land cover and a mandated management plan in operation to maintain a primarily natural state, but which may receive use or management practices that degrade the quality of existing natural communities.

GAP Status 3: An area having permanent protection from conversion of natural land cover for the majority of the area, but subject to extractive uses of either a broad, low-intensity type or localized intense type. It also confers protection to federally listed endangered and threatened species throughout the area.

GAP Status 4: Lack of irrevocable easement or mandate to prevent conversion of natural habitat types to anthropogenic habitat types. Allows for intensive use throughout the tract. Also includes those tracts for which the existence of such restrictions or sufficient information to establish a higher status is unknown.

## PREDICTED HABITAT MODEL(S):

### Summer Model:

Habitat Description: Almost exclusively coastal except for a few sites on rooftops in Pensacola, Ft. Walton Beach and Panama City Florida. Prefers open sandy areas or gravel or shell bars with sparse vegetation or broad mats of searwack on salt marsh. Forages along tidal waters of bays, estuaries, lagoons etc...(Gochfeld and Burger 1994). M. Rubino, 05jan05.

### Hydrography Mask:

Brackish/Saltwater Only

Utilizes open water features with buffers of unlimited from and 500m into selected water features.

Utilizes wet vegetation features with buffer of unlimited into selected vegetation features.

### Selected Map Units:

| Functional Group                  | Map Unit Name   |
|-----------------------------------|---|
| Beach                             | Atlantic Coastal Plain Northern Sandy Beach                               |
| Beach                             | Atlantic Coastal Plain Sea Island Beach                                   |
| Beach                             | Atlantic Coastal Plain Southern Beach                                     |
| Beach                             | Florida Panhandle Beach Vegetation  |
| Beach                             | South Florida Shell Hash Beach  |
| Beach                             | Southeast Florida Beach   |
| Beach                             | Southwest Florida Beach   |
| Beach                             | Unconsolidated Shore (Beach/Dune)   |
| Brackish Tidal Marsh & Wetland    | Atlantic Coastal Plain Central Salt and Brackish Tidal Marsh              |
| Brackish Tidal Marsh & Wetland    | Atlantic Coastal Plain Embayed Region Tidal Salt and Brackish Marsh       |
| Brackish Tidal Marsh & Wetland    | Atlantic Coastal Plain Indian River Lagoon Tidal Marsh                    |
| Brackish Tidal Marsh & Wetland    | Atlantic Coastal Plain Northern Tidal Salt Marsh                          |
| Brackish Tidal Marsh & Wetland    | Florida Big Bend Salt-Brackish Tidal Marsh                                |
| Brackish Tidal Marsh & Wetland    | Mississippi Sound Salt and Brackish Tidal Marsh                           |
| Brackish Tidal Marsh & Wetland    | South Florida Everglades Sawgrass Marsh                                   |
| Brackish Tidal Marsh & Wetland    | Southwest Florida Perched Barriers Salt Swamp and Lagoon - Marsh Modifier |
| Coastal Dune & Freshwater Wetland | Atlantic Coastal Plain Northern Dune and Maritime Grassland               |
| Coastal Dune & Freshwater Wetland | Atlantic Coastal Plain Southern Dune and Maritime Grassland               |
| Coastal Dune & Freshwater Wetland | East Gulf Coastal Plain Dune and Coastal Grassland                        |
| Coastal Dune & Freshwater Wetland | Southwest Florida Dune and Coastal Grassland                              |
| Water                             | Open Water (Brackish/Salt)  |

**CITATIONS:** American Ornithologists' Union (AOU), Committee on Classification and Nomenclature. 1983. Check-list of North American Birds. Sixth Edition. American Ornithologists' Union, Allen Press, Inc., Lawrence, Kansas.

Bent, A.C. 1921. Life histories of North American gulls and terns. U.S. Natl. Mux. Bull. 113. Washington, D.C.

Buckley, P. A., and F. G. Buckley. 1984. Seabirds of the north and middle Atlantic coast of the United States: their status and conservation. Pages 101-133 in Croxall et al., eds. Status and conservation of the world's seabirds. ICBP Tech. Pub. No. 2.

Burger, J., and M. Gochfeld. 1990. The black skimmer: the social dynamics of a colonial species. Columbia Univ. Press, New York. 416 pp.

Clapp, R. B., and P. A. Buckley. 1984. Status and conservation of seabirds in the southeastern United States. Pages 135-155 in Croxall et al., eds. Status and conservation of the world's seabirds. ICBP Tech. Pub. No. 2.

Duffy, D. C., and M. Hurtado. 1984. The conservation and status of seabirds of the Ecuadorian mainland. Pages 231-236 in Croxall et al., eds. Status and conservation of the world's seabirds. ICBP Tech. Pub. No. 2.

Erwin, R.M. 1977. Black skimmer breeding ecology and behavior. Auk 94:709-717.

Gochfeld, M. and J. Burger. 1994. Black skimmer (*Rynchops niger*). In A. Poole and F. Gill, eds., The Birds of North America, No. 108. The Academy of Natural Sciences, Philadelphia and The American Ornithologists' Union, Washington, DC.

Harrison, C. 1978. A field guide to the nests, eggs and nestlings of North American birds. Collins, Cleveland, Ohio.

Hilty, S.L., and W.L. Brown. 1986. A guide to the birds of Colombia. Princeton University Press, Princeton, New Jersey. 836 pp.

National Geographic Society (NGS). 1983. Field guide to the birds of North America. National Geographic Society, Washington, D.C.

Safina, C., and J. Burger. 1983. Effects of human disturbance on reproductive success in the black skimmer. *Condor* 85:164-171.

Spendelow, J.A., and S.R. Patton. 1988. National atlas of coastal waterbird colonies in the contiguous United States:1976-1982. U.S. Fish and Wildlife Service, Biological Report 88(5). x + 326 pp.

Stiles, F.G., and A.F. Skutch. 1989. A guide to the birds of Costa Rica. Comstock Publ. Associates, Cornell University Press, Ithaca, New York. 511 pp.

Terres, J.K. 1980. The Audubon Society encyclopedia of North American birds. Alfred A. Knopf, New York.

---

For more information:: SE-GAP Analysis Project / BaSIC  
127 David Clark Labs  
Dept. of Biology, NCSU  
Raleigh, NC 27695-7617  
(919) 513-2853  
[www.basic.ncsu.edu/segap](http://www.basic.ncsu.edu/segap)

Compiled: 15 September 2011

This data was compiled and/or developed  
by the Southeast GAP Analysis Project at  
The Biodiversity and Spatial Information  
Center, North Carolina State University.