



SOUTHEAST GAP ANALYSIS PROJECT



Species Modeling Report

Blue Grosbeak

Passerina caerulea

Taxa: Avian

Order: Passeriformes

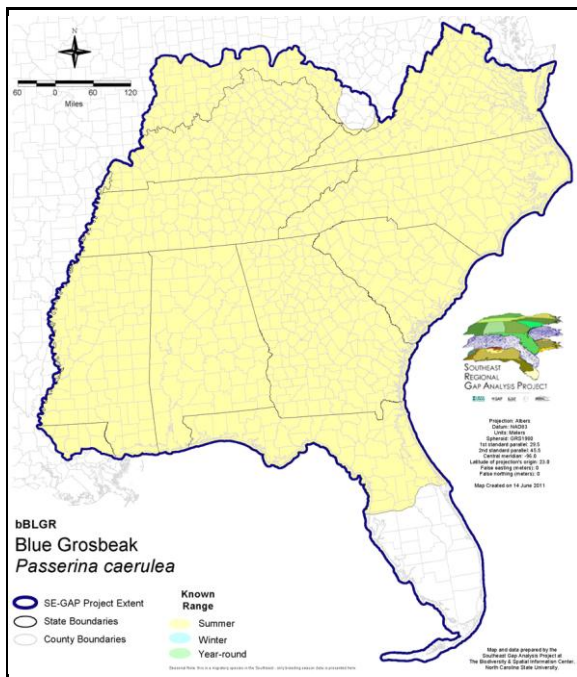
Family: Cardinalidae

SE-GAP Spp Code: **bBLGR**

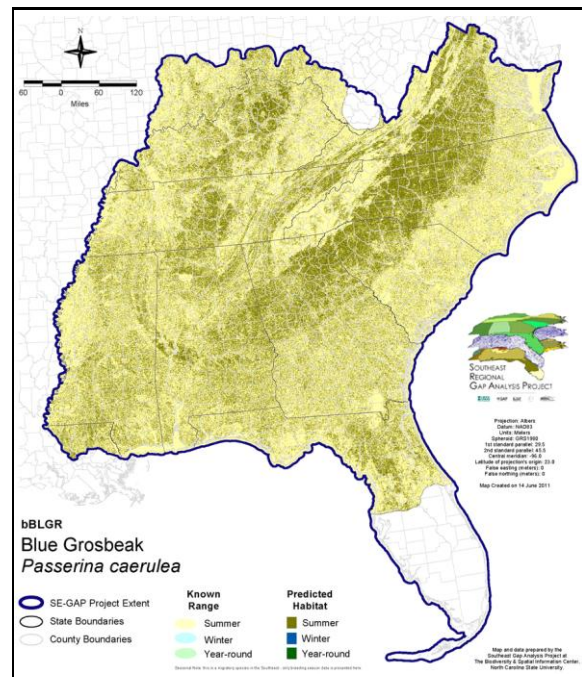
ITIS Species Code: 179145

NatureServe Element Code: ABPBX64010

KNOWN RANGE:



PREDICTED HABITAT:



Range Map Link: http://www.basic.ncsu.edu/segap/datazip/maps/SE_Range_bBLGR.pdf

Predicted Habitat Map Link: http://www.basic.ncsu.edu/segap/datazip/maps/SE_Dist_bBLGR.pdf

GAP Online Tool Link: <http://www.gapservice.ncsu.edu/segap/segap/index2.php?species=bBLGR>

Data Download: http://www.basic.ncsu.edu/segap/datazip/region/vert/bBLGR_se00.zip

PROTECTION STATUS:

Reported on March 14, 2011

Federal Status: ---

State Status: ID (P), ID (P), KY (N), MN (NON), NJ (INC/S), NV (YES), NY (PB), OH (SI), RI (Not Listed), UT (None), BC (8 (2005)), QC (Non suivie)

NS Global Rank: G5

NS State Rank: AK (SNA), AL (S5B), AL (S5B), AR (S4B,S4N), AZ (S5), CA (SNRB), CO (S4B), CO (S4B), CT (SNA), DC (S2B,S2N), DE (S5B), FL (SNRB), GA (S5), IA (S3B,S3N), ID (S1B), ID (S1B), IL (S5), IN (S3B), KS (S4B), KY (S4B), LA (S5B), MA (S1N), MD (S5B), ME (SNA), MI (SNA), MN (SNRB), MO (SNRB), MS (S5B), MS (S5B), MT (SNA), NC (S5B), NC (S5B), ND (SU), NE (S5), NH (SNA), NJ (S4B), NM (S5B,S5N), NV (S3B), NY (SNA), OH (S3?), OK (S5B), OR (SNA), PA (S4B), RI (SNA), SC (SNRB), SD (S4B), SD (S4B), TN (S4), TX (S4B), UT (S3B), VA (S5), VT (SNA), WI (SNA), WV (S4B), WY (S3B), WY (S3B), BC (SNA), LB (SNA), MB (SNA), NB (SNA), NF (SNA), NS (SNA), ON (SNA), PE (SNA), QC (SNA)

SUMMARY OF PREDICTED HABITAT BY MANAGMENT AND GAP PROTECTION STATUS:

	US FWS		US Forest Service		Tenn. Valley Author.		US DOD/ACOE	
	ha	%	ha	%	ha	%	ha	%
Status 1	10,867.8	< 1	436.1	< 1	0.0	0	0.0	0
Status 2	27,887.3	< 1	15,775.5	< 1	0.0	0	2,067.8	< 1
Status 3	253.3	< 1	224,345.4	< 1	24,927.4	< 1	186,362.0	< 1
Status 4	14.6	< 1	0.0	0	0.0	0	92.0	< 1
Total	39,022.9	< 1	240,557.0	< 1	24,927.4	< 1	188,521.7	< 1
	US Dept. of Energy		US Nat. Park Service		NOAA		Other Federal Lands	
	ha	%	ha	%	ha	%	ha	%
Status 1	0.0	0	4,144.5	< 1	13.3	< 1	129.8	< 1
Status 2	0.0	0	2,024.6	< 1	3,281.0	< 1	7.6	< 1
Status 3	3,755.7	< 1	28,893.5	< 1	0.0	0	3,567.4	< 1
Status 4	0.0	0	0.0	0	0.0	0	0.0	0
Total	3,755.7	< 1	35,062.6	< 1	3,294.3	< 1	3,704.8	< 1
	Native Am. Reserv.		State Park/Hist. Park		State WMA/Gameland		State Forest	
	ha	%	ha	%	ha	%	ha	%
Status 1	0.0	0	179.3	< 1	6.5	< 1	0.0	0
Status 2	0.0	0	1,070.8	< 1	105,970.2	< 1	80.5	< 1
Status 3	3,641.0	< 1	80,024.0	< 1	36,667.0	< 1	69,048.5	< 1
Status 4	0.0	0	0.0	0	29,871.9	< 1	6.9	< 1
Total	3,641.0	< 1	81,274.1	< 1	172,515.6	< 1	69,135.9	< 1
	State Coastal Reserve		ST Nat.Area/Preserve		Other State Lands		Private Cons. Easemt.	
	ha	%	ha	%	ha	%	ha	%
Status 1	0.0	0	976.9	< 1	0.0	0	0.0	0
Status 2	1,619.5	< 1	9,735.8	< 1	1.9	< 1	810.5	< 1
Status 3	0.0	0	5,714.3	< 1	14,579.5	< 1	37,808.6	< 1
Status 4	0.0	0	0.0	0	2,264.3	< 1	< 0.1	< 1
Total	1,619.5	< 1	16,427.0	< 1	16,845.7	< 1	38,619.2	< 1
	Private Land - No Res.		Water		Overall Total			
	ha	%	ha	%	ha	%	ha	%
Status 1	0.0	0	0.0	0	16,754.0 < 1			
Status 2	0.0	0	0.0	0	170,332.7 < 1			
Status 3	301.3	< 1	< 0.1	< 1	719,889.1 3			
Status 4	32,465,579.7	96	8,020.2	< 1	32,535,707.0 97			
Total	32,465,881.0	96	8,020.3	< 1	33,442,682.9 100			

GAP Status 1: An area having permanent protection from conversion of natural land cover and a mandated management plan in operation to maintain a natural state within which disturbance events (of natural type, frequency, and intensity) are allowed to proceed without interference or are mimicked through management.

GAP Status 2: An area having permanent protection from conversion of natural land cover and a mandated management plan in operation to maintain a primarily natural state, but which may receive use or management practices that degrade the quality of existing natural communities.

GAP Status 3: An area having permanent protection from conversion of natural land cover for the majority of the area, but subject to extractive uses of either a broad, low-intensity type or localized intense type. It also confers protection to federally listed endangered and threatened species throughout the area.

GAP Status 4: Lack of irrevocable easement or mandate to prevent conversion of natural habitat types to anthropogenic habitat types. Allows for intensive use throughout the tract. Also includes those tracts for which the existence of such restrictions or sufficient information to establish a higher status is unknown.

PREDICTED HABITAT MODEL(S):

Summer Model:

Habitat Description: Inhabits old fields, forest edge, transmission-line corridors, open slashings (left after logging), hedgerows, stream edge, clear-cuts, etc.... Nests in low tree or bush, tangle of vegetation, usually about 1-3 m above ground, often at edge of open area (Ingold 1993). M. Rubino, 10jan05.

Elevation Mask: < 853m

Mask of Forest Interior Avoidance: Exclude forest interiors with 250m buffer into them.

Selected Map Units:

Functional Group	Map Unit Name
Anthropogenic	Developed Open Space
Anthropogenic	Pasture/Hay
Anthropogenic	Successional Grassland/Herbaceous
Anthropogenic	Successional Grassland/Herbaceous (Other)
Anthropogenic	Successional Grassland/Herbaceous (Utility Swath)
Anthropogenic	Successional Shrub/Scrub (Clear Cut)
Anthropogenic	Successional Shrub/Scrub (Other)
Anthropogenic	Successional Shrub/Scrub (Utility Swath)
Forest/Woodland	Alabama Ketona Glade and Woodland
Forest/Woodland	Appalachian Shale Barrens
Forest/Woodland	Atlantic Coastal Plain Fall-line Sandhills Longleaf Pine Woodland - Offsite Hardwood Modifier
Forest/Woodland	Central Appalachian Alkaline Glade and Woodland
Forest/Woodland	Central Appalachian Pine-Oak Rocky Woodland
Forest/Woodland	Central Interior Highlands Calcareous Glade and Barrens
Forest/Woodland	Central Interior Highlands Dry Acidic Glade and Barrens
Forest/Woodland	Cumberland Sandstone Glade and Barrens
Forest/Woodland	East Gulf Coastal Plain Black Belt Calcareous Prairie and Woodland - Woodland Modifier
Forest/Woodland	East Gulf Coastal Plain Interior Upland Longleaf Pine Woodland - Offsite Hardwood Modifier
Forest/Woodland	Nashville Basin Limestone Glade
Forest/Woodland	Ridge and Valley Calcareous Valley Bottom Glade and Woodland
Forest/Woodland	Southern and Central Appalachian Mafic Glade and Barrens
Forest/Woodland	Southern Piedmont Dry Oak-(Pine) Forest - Hardwood Modifier
Forest/Woodland	Southern Piedmont Glade and Barrens
Forest/Woodland	Southern Piedmont Mafic Hardpan Woodland
Forest/Woodland	Southern Piedmont Mesic Forest
Prairie	Bluegrass Basin Savanna and Woodland
Prairie	East Gulf Coastal Plain Black Belt Calcareous Prairie and Woodland
Prairie	East Gulf Coastal Plain Black Belt Calcareous Prairie and Woodland - Herbaceous Modifier
Prairie	East Gulf Coastal Plain Jackson Plain Prairie and Barrens
Prairie	East Gulf Coastal Plain Jackson Prairie and Woodland
Prairie	Eastern Highland Rim Prairie and Barrens
Prairie	Eastern Highland Rim Prairie and Barrens - Dry Modifier
Prairie	Panhandle Florida Limestone Glade
Prairie	Pennyroyal Karst Plain Prairie and Barrens
Prairie	Southern Ridge and Valley Patch Prairie
Prairie	Western Highland Rim Prairie and Barrens
Wetlands	East Gulf Coastal Plain Jackson Plain Dry Flatwoods - Open Understory Modifier
Wetlands	East Gulf Coastal Plain Jackson Plain Dry Flatwoods - Scrub/Shrub Understory Modifier

CITATIONS: Ingold, James L. 1993. Blue Grosbeak (*Passerina caerulea*), The Birds of North America Online (A. Poole, Ed.). Ithaca: Cornell Lab of Ornithology No. 79.

For more information:: SE-GAP Analysis Project / BaSIC
127 David Clark Labs
Dept. of Biology, NCSU
Raleigh, NC 27695-7617
(919) 513-2853
www.basic.ncsu.edu/segap

Compiled: 15 September 2011

This data was compiled and/or developed
by the Southeast GAP Analysis Project at
The Biodiversity and Spatial Information
Center, North Carolina State University.