



SOUTHEAST GAP ANALYSIS PROJECT



Species Modeling Report

Black-crowned Night-Heron

Nycticorax nycticorax

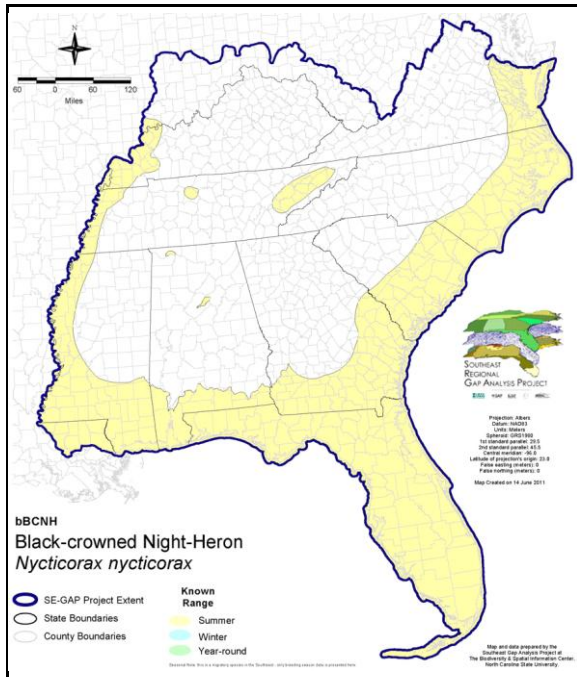
Taxa: Avian
 Order: Ciconiiformes
 Family: Ardeidae

SE-GAP Spp Code: **bBCNH**

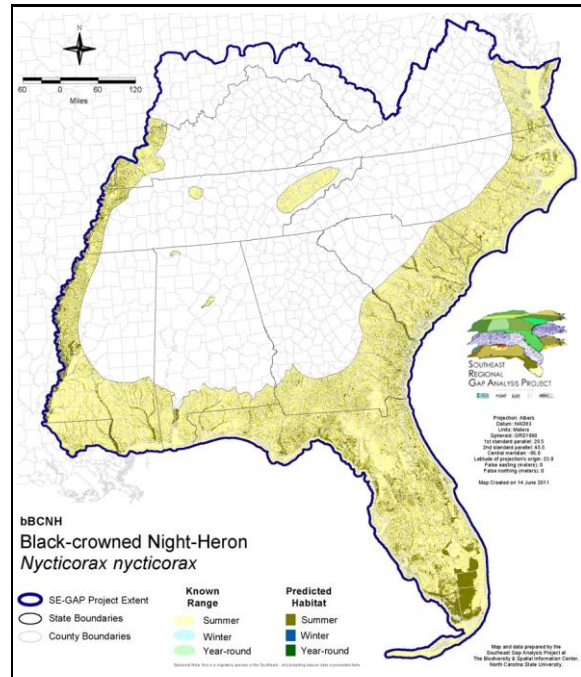
ITIS Species Code: 174832

NatureServe Element Code: ABNGA11010

KNOWN RANGE:



PREDICTED HABITAT:



Range Map Link: http://www.basic.ncsu.edu/segap/datazip/maps/SE_Range_bBCNH.pdf

Predicted Habitat Map Link: http://www.basic.ncsu.edu/segap/datazip/maps/SE_Dist_bBCNH.pdf

GAP Online Tool Link: <http://www.gapservice.ncsu.edu/segap/segap/index2.php?species=bBCNH>

Data Download: http://www.basic.ncsu.edu/segap/datazip/region/vert/bBCNH_se00.zip

PROTECTION STATUS:

Reported on March 14, 2011

Federal Status: ---

State Status: AR (W), CA (None), DE (E), ID (P), IL (LE), IN (SE), KY (T), ME (T), MI (SC), NJ (T/SC), NV (YES), NY (PB), OH (T), PA (PE), RI (Concern), UT (None), WA (M), WI (SC/M), BC (2 (2005)), QC (Non suivie)

NS Global Rank: G5

NS State Rank: AK (SNA), AL (S3B,S4N), AR (S2B,S3N), AZ (S3), CA (S3), CO (S3B), CT (S2B), DC (S3B), DE (S1B), FL (S3), GA (S4), HI (SU), IA (S3B,S3N), ID (S2B), IL (S2), IN (S1B), KS (S2B), KY (S1S2B), LA (S3N,S5B), MA (S2B), MD (S3B,S2N), ME (S2B), MI (S2S3), MN (SNRB), MO (S3), MS (S3B,S4N), MT (S3B), NC (S4B,S4N), ND (SNRB), NE (S3), NH (SHB), NJ (S2B,S3N), NM (S4B,S4N), NV (S5B), NY (S3), OH (S1), OK (S3B), OR (S4), PA (S2S3B), RI (S2B), SC (SNRB,SNRN), SD (S3S4B), TN (S2S3B), TX (S4B), UT (S3S4B,S3N), VA (S3B,S4N), VT (S1B,S2N), WA (S3B,S3N), WI (S2B), WV (SHB), WY (S3B), AB (S2), BC (S1N), MB (S3S4B), NB (S3S4B), NF (SNA), NS (S1B), ON (S3B,S3N), PE (SNA), QC (S4B), SK (S5B)

SUMMARY OF PREDICTED HABITAT BY MANAGMENT AND GAP PROTECTION STATUS:

	US FWS		US Forest Service		Tenn. Valley Author.		US DOD/ACOE	
	ha	%	ha	%	ha	%	ha	%
Status 1	114,732.6	1	4,617.7	< 1	0.0	0	0.0	0
Status 2	126,272.9	1	25,992.0	< 1	0.0	0	0.2	< 1
Status 3	1,191.2	< 1	197,587.7	2	1,381.8	< 1	98,282.6	< 1
Status 4	23.2	< 1	< 0.1	< 1	0.0	0	45.6	< 1
Total	242,219.9	2	228,197.5	2	1,381.8	< 1	98,328.4	< 1
	US Dept. of Energy		US Nat. Park Service		NOAA		Other Federal Lands	
	ha	%	ha	%	ha	%	ha	%
Status 1	0.0	0	366,044.8	3	953.3	< 1	10,705.3	< 1
Status 2	0.0	0	26,253.3	< 1	39,928.2	< 1	27.4	< 1
Status 3	14,007.8	< 1	157,375.5	1	0.0	0	1,393.7	< 1
Status 4	0.0	0	1.0	< 1	0.0	0	0.0	0
Total	14,007.8	< 1	549,675.5	5	40,881.5	< 1	12,126.3	< 1
	Native Am. Reserv.		State Park/Hist. Park		State WMA/Gameland		State Forest	
	ha	%	ha	%	ha	%	ha	%
Status 1	0.0	0	92.5	< 1	0.0	0	0.0	0
Status 2	0.0	0	711.8	< 1	614,196.2	6	0.0	0
Status 3	30.2	< 1	425,223.5	4	44,453.4	< 1	113,937.9	1
Status 4	0.0	0	< 0.1	< 1	7,284.3	< 1	5.4	< 1
Total	30.2	< 1	426,028.0	4	665,933.9	6	113,943.3	1
	State Coastal Reserve		ST Nat.Area/Preserve		Other State Lands		Private Cons. Easemt.	
	ha	%	ha	%	ha	%	ha	%
Status 1	0.0	0	928.1	< 1	0.0	0	0.0	0
Status 2	31,531.2	< 1	47,251.9	< 1	0.2	< 1	1,307.0	< 1
Status 3	0.0	0	14,355.8	< 1	5,988.8	< 1	67,486.0	< 1
Status 4	0.0	0	0.0	0	1,014.1	< 1	0.0	0
Total	31,531.2	< 1	62,535.8	< 1	7,003.1	< 1	68,792.9	< 1
	Private Land - No Res.		Water		Overall Total			
	ha	%	ha	%	ha	%	ha	%
Status 1	0.0	< 1	0.0	0	498,074.5 5			
Status 2	0.8	< 1	0.0	8	913,473.1 9			
Status 3	236.6	< 1	< 0.1	< 1	1,142,932.6 13			
Status 4	7,782,488.2	73	64,763.6	< 1	7,862,887.6 74			
Total	7,782,725.8	73	64,763.7	< 1	10,417,367.8 100			

GAP Status 1: An area having permanent protection from conversion of natural land cover and a mandated management plan in operation to maintain a natural state within which disturbance events (of natural type, frequency, and intensity) are allowed to proceed without interference or are mimicked through management.

GAP Status 2: An area having permanent protection from conversion of natural land cover and a mandated management plan in operation to maintain a primarily natural state, but which may receive use or management practices that degrade the quality of existing natural communities.

GAP Status 3: An area having permanent protection from conversion of natural land cover for the majority of the area, but subject to extractive uses of either a broad, low-intensity type or localized intense type. It also confers protection to federally listed endangered and threatened species throughout the area.

GAP Status 4: Lack of irrevocable easement or mandate to prevent conversion of natural habitat types to anthropogenic habitat types. Allows for intensive use throughout the tract. Also includes those tracts for which the existence of such restrictions or sufficient information to establish a higher status is unknown.

PREDICTED HABITAT MODEL(S):

Summer Model:

Habitat Description: Prefers to nest in dense woods or thickets near water bodies, either salt, brackish, or fresh (Hamel 1992). Forages along edges of water bodies including swamps, streams, rivers, ponds, lakes, lagoons, tidal mudflats, salt marshes, canals and ditches, reservoirs, wet agricultural fields, etc. (Hamel 1992, Davis 1993). Inland, most colonies are associated with large wetlands (Davis 1993). M. Rubino, 21dec04.

Hydrography Mask:

Utilizes flowing water features with buffers of 120m from and 30m into selected water features.

Utilizes open water features with buffers of 120m from and 30m into selected water features.

Utilizes wet vegetation features with buffer of unlimited into selected vegetation features.

Selected Map Units:

Functional Group	Map Unit Name
Anthropogenic	Developed Open Space
Anthropogenic	Row Crop
Brackish Tidal Marsh & Wetland	Atlantic Coastal Plain Central Salt and Brackish Tidal Marsh
Brackish Tidal Marsh & Wetland	Atlantic Coastal Plain Embayed Region Tidal Salt and Brackish Marsh
Brackish Tidal Marsh & Wetland	Atlantic Coastal Plain Indian River Lagoon Tidal Marsh
Brackish Tidal Marsh & Wetland	Atlantic Coastal Plain Northern Sea-Level Fen
Brackish Tidal Marsh & Wetland	Atlantic Coastal Plain Northern Tidal Salt Marsh
Brackish Tidal Marsh & Wetland	Atlantic Coastal Plain Northern Tidal Wooded Swamp
Brackish Tidal Marsh & Wetland	Atlantic Coastal Plain Southern Tidal Wooded Swamp
Brackish Tidal Marsh & Wetland	East Gulf Coastal Plain Tidal Wooded Swamp
Brackish Tidal Marsh & Wetland	Florida Big Bend Salt-Brackish Tidal Marsh
Brackish Tidal Marsh & Wetland	Mississippi Sound Salt and Brackish Tidal Marsh
Brackish Tidal Marsh & Wetland	South Florida Everglades Sawgrass Marsh
Brackish Tidal Marsh & Wetland	South Florida Mangrove Swamp
Brackish Tidal Marsh & Wetland	Southwest Florida Perched Barriers Salt Swamp and Lagoon - Mangrove Modifier
Brackish Tidal Marsh & Wetland	Southwest Florida Perched Barriers Salt Swamp and Lagoon - Marsh Modifier
Coastal Dune & Freshwater Wetland	Atlantic and Gulf Coastal Plain Interdunal Wetland
Freshwater Tidal Marsh & Wetland	Atlantic Coastal Plain Central Fresh-Oligohaline Tidal Marsh
Freshwater Tidal Marsh & Wetland	Atlantic Coastal Plain Embayed Region Tidal Freshwater Marsh
Freshwater Tidal Marsh & Wetland	Atlantic Coastal Plain Northern Fresh and Oligohaline Tidal Marsh
Freshwater Tidal Marsh & Wetland	Florida Big Bend Fresh-Oligohaline Tidal Marsh
Water	Open Water (Aquaculture)
Water	Open Water (Brackish/Salt)
Water	Open Water (Fresh)
Wetlands	Atlantic Coastal Plain Blackwater Stream Floodplain Forest - Forest Modifier
Wetlands	Atlantic Coastal Plain Blackwater Stream Floodplain Forest - Herbaceous Modifier
Wetlands	Atlantic Coastal Plain Brownwater Stream Floodplain Forest
Wetlands	Atlantic Coastal Plain Clay-Based Carolina Bay Forested Wetland
Wetlands	Atlantic Coastal Plain Clay-Based Carolina Bay Herbaceous Wetland
Wetlands	Atlantic Coastal Plain Depression Pondshore
Wetlands	Atlantic Coastal Plain Large Natural Lakeshore
Wetlands	Atlantic Coastal Plain Nonriverine Swamp and Wet Hardwood Forest - Taxodium/Nyssa Modifier
Wetlands	Atlantic Coastal Plain Nonriverine Swamp and Wet Hardwood Forest - Oak Dominated Modifier
Wetlands	Atlantic Coastal Plain Northern Basin Peat Swamp
Wetlands	Atlantic Coastal Plain Northern Basin Swamp and Wet Hardwood Forest
Wetlands	Atlantic Coastal Plain Northern Pondshore
Wetlands	Atlantic Coastal Plain Northern Wet Longleaf Pine Savanna and Flatwoods
Wetlands	Atlantic Coastal Plain Sandhill Seep
Wetlands	Atlantic Coastal Plain Small Blackwater River Floodplain Forest
Wetlands	Atlantic Coastal Plain Small Brownwater River Floodplain Forest
Wetlands	Atlantic Coastal Plain Xeric River Dune
Wetlands	Central Appalachian Floodplain - Forest Modifier

Wetlands	Central Florida Herbaceous Pondshore
Wetlands	Central Florida Herbaceous Seep
Wetlands	Cumberland Riverscour
Wetlands	East Gulf Coastal Plain Large River Floodplain Forest - Forest Modifier
Wetlands	East Gulf Coastal Plain Large River Floodplain Forest - Herbaceous Modifier
Wetlands	East Gulf Coastal Plain Near-Coast Pine Flatwoods - Offsite Hardwood Modifier
Wetlands	East Gulf Coastal Plain Near-Coast Pine Flatwoods - Scrub/Shrub Understory Modifier
Wetlands	East Gulf Coastal Plain Northern Depression Pondshore
Wetlands	East Gulf Coastal Plain Northern Seepage Swamp
Wetlands	East Gulf Coastal Plain Small Stream and River Floodplain Forest
Wetlands	East Gulf Coastal Plain Southern Depression Pondshore
Wetlands	Floridian Highlands Freshwater Marsh
Wetlands	Lower Mississippi River Bottomland and Floodplain Forest
Wetlands	Lower Mississippi River Bottomland Depressions - Forest Modifier
Wetlands	Lower Mississippi River Bottomland Depressions - Herbaceous Modifier
Wetlands	Mississippi River Low Floodplain (Bottomland) Forest
Wetlands	Mississippi River Riparian Forest
Wetlands	South Florida Bayhead Swamp
Wetlands	South Florida Freshwater Slough and Gator Hole
Wetlands	South Florida Pond-Apple/Popash Slough
Wetlands	South Florida Willow Head
Wetlands	South-Central Interior Large Floodplain - Forest Modifier
Wetlands	South-Central Interior Large Floodplain - Herbaceous Modifier
Wetlands	South-Central Interior Small Stream and Riparian
Wetlands	South-Central Interior/Upper Coastal Plain Wet Flatwoods
Wetlands	Southern Appalachian Seepage Wetland
Wetlands	Southern Coastal Plain Blackwater River Floodplain Forest
Wetlands	Southern Coastal Plain Herbaceous Seepage Bog
Wetlands	Southern Coastal Plain Hydric Hammock
Wetlands	Southern Coastal Plain Nonriverine Basin Swamp
Wetlands	Southern Coastal Plain Nonriverine Cypress Dome
Wetlands	Southern Coastal Plain Spring-run Stream Aquatic Vegetation
Wetlands	Southern Piedmont Large Floodplain Forest - Forest Modifier
Wetlands	Southern Piedmont Large Floodplain Forest - Herbaceous Modifier
Wetlands	Southern Piedmont Small Floodplain and Riparian Forest
Wetlands	Southern Piedmont/Ridge and Valley Upland Depression Swamp

CITATIONS: Allen, R. P. and F.P. Mangles. 1940. Studies of the nesting behavior of the black-crowned night heron. Proc. Linnaean Soc. New York 50-51:1-28.

American Ornithologists' Union (AOU), Committee on Classification and Nomenclature. 1983. Check-list of North American Birds. Sixth Edition. American Ornithologists' Union, Allen Press, Inc., Lawrence, Kansas.

Berger, A.J. 1981. Hawaiian Birdlife. Second Edition. University of Hawaii Press, Honolulu, Hawaii. xv + 260 pp.

Custer, T. W., G. L. Hensler, and T. E. Kaiser. 1983. Clutch size, reproductive success, and organochlorine contaminants in Atlantic coast black-crowned night herons. Auk 100:699-710.

Davis, W. E. Jr. 1993. Black-crowned Night-heron. The Birds of North America. A. Poole, P. Stettenheim, and F. Gill ed. Philadelphia: The Academy of Natural Sciences; Washington, D.C.: The American Ornithologists Union; 1 (74).

DeMauro, M. M. 1993. Colonial nesting bird responses to visitor use at Lake Renwick heron rookery, Illinois. Natural Areas Journal 13:4-9.

Ehrlich, P.R., D.S. Dobkin, and D. Wheye. 1988. The birder's handbook: a field guide to the natural history of North American birds. Simon and Shuster, Inc., New York. xxx + 785 pp.

Ehrlich, P.R., D.S. Dobkin, and D. Wheye. 1992. Birds in jeopardy: the imperiled and extinct birds of the United States and Canada, including Hawaii and Puerto Rico. Stanford University Press, Stanford, California. 259 pp.

Engilis, A., Jr., and T. K. Pratt. 1993. Status and population trends of Hawaii's native waterbirds, 1977-1987. Wilson Bull. 105:142-158.

Fleury, B. E., and T. W. Sherry. 1995. Long-term population trends of colonial wading birds in the southern United States: the impact of crayfish aquaculture on Louisiana populations. Auk 112:613-632.

- Hamel, P. B. 1992. The land manager's guide to the birds of the south. The Nature Conservancy, Chapel Hill, North Carolina. 367 pp + several appendices.
- Harrison, H.H. 1975. A field guide to bird's nests in the U.S. east of the Mississippi River. Houghton Mifflin Company, Boston, Massachusetts. 257 p.
- Herkert, J. R., editor. 1992. Endangered and threatened species of Illinois:status and distribution. Vol. 2:Animals. Illinois Endangered Species Protection Board. iv + 142 pp.
- Hilty, S.L., and W.L. Brown. 1986. A guide to the birds of Colombia. Princeton University Press, Princeton, New Jersey. 836 pp.
- National Geographic Society (NGS). 1983. Field guide to the birds of North America. National Geographic Society, Washington, D.C.
- Palmer, R. S. (editor). 1962. Handbook of North American birds. Vol. 1. Loons through flamingos. Yale University Press, New Haven. 567 pp.
- Payne, R. B., and C. J. Risley. 1976. Systematics and evolutionary relationships among the herons (Ardeidae). Univ. Michigan Mus. Zool., Misc. Publ. No. 150. 115 pp.
- Potter, E. F., J. F. Parnell, and R. P. Teulings. 1980. Birds of the Carolinas. Univ. North Carolina Press, Chapel Hill. 408 pp.
- Pratt, H.D., P.L. Bruner, and D.G. Berrett. 1987. A field guide to the birds of Hawaii and the tropical Pacific. Princeton University Press, Princeton, New Jersey. 409 pp. + 45 plates.
- Root, T. 1988. Atlas of wintering North American birds:An analysis of Christmas Bird Count data. University of Chicago Press. 336 pp.
- Scott, J. M., et al. 1988. Conservation of Hawaii's vanishing avifauna. BioScience 38:238-253.
- Spendelow, J.A., and S.R. Patton. 1988. National atlas of coastal waterbird colonies in the contiguous United States:1976-1982. U.S. Fish and Wildlife Service, Biological Report 88(5). x + 326 pp.
- Stiles, F.G., and A.F. Skutch. 1989. A guide to the birds of Costa Rica. Comstock Publ. Associates, Cornell University Press, Ithaca, New York. 511 pp.
- Terres, J.K. 1980. The Audubon Society encyclopedia of North American birds. Alfred A. Knopf, New York.

For more information:: SE-GAP Analysis Project / BaSIC
127 David Clark Labs
Dept. of Biology, NCSU
Raleigh, NC 27695-7617
(919) 513-2853
www.basic.ncsu.edu/segap

Compiled: 15 September 2011

This data was compiled and/or developed
by the Southeast GAP Analysis Project at
The Biodiversity and Spatial Information
Center, North Carolina State University.