



SOUTHEAST GAP ANALYSIS PROJECT



Species Modeling Report

Barn Swallow

Hirundo rustica

Taxa: Avian

Order: Passeriformes

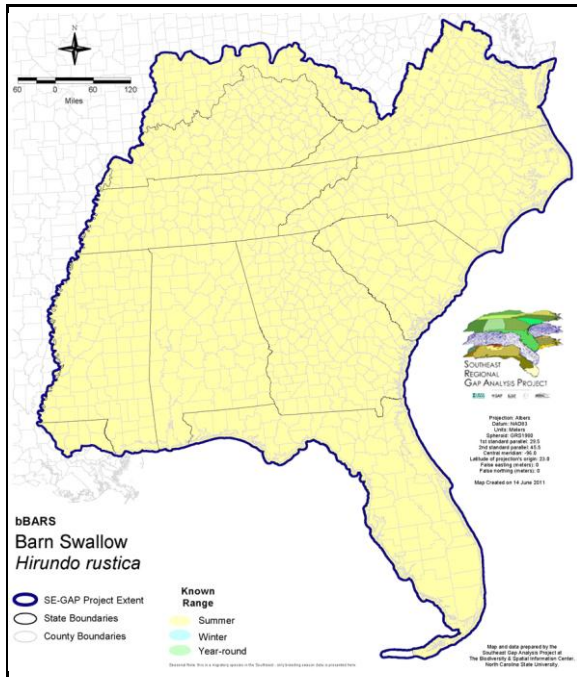
Family: Hirundinidae

SE-GAP Spp Code: **bBARS**

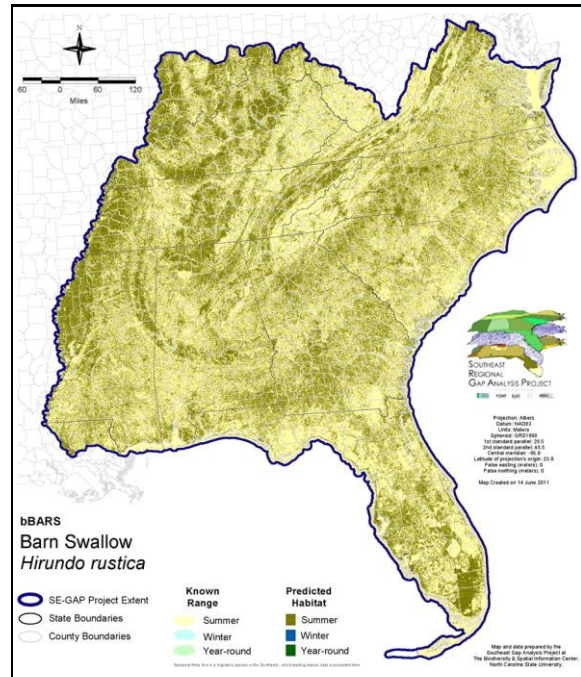
ITIS Species Code: 178448

NatureServe Element Code: ABPAU09030

KNOWN RANGE:



PREDICTED HABITAT:



Range Map Link: http://www.basic.ncsu.edu/segap/datazip/maps/SE_Range_bBARS.pdf

Predicted Habitat Map Link: http://www.basic.ncsu.edu/segap/datazip/maps/SE_Dist_bBARS.pdf

GAP Online Tool Link: <http://www.gapservice.ncsu.edu/segap/segap/index2.php?species=bBARS>

Data Download: http://www.basic.ncsu.edu/segap/datazip/region/vert/bBARS_se00.zip

PROTECTION STATUS:

Reported on March 14, 2011

Federal Status: ---

State Status: ID (P), ID (P), KY (N), ME (SC), NJ (S/S), NV (YES), NY (PB), RI (Not Listed), UT (None), BC (3 (2005)), BC (3 (2005)), QC (Non suivie)

NS Global Rank: G5

NS State Rank: AK (S4B), AL (S5B), AL (S5B), AR (S4B,S4N), AZ (S5), CA (S5), CO (S5), CT (S5B), CT (S5B), DC (S5B,S5N), DE (S5B), FL (SNRB), GA (S5), IA (S5B,S5N), ID (S5B), ID (S5B), IL (S5), IN (S5B), KS (S5B), KY (S5B), LA (S5B), MA (S5B), MD (S5B), ME (S4B), MI (S5), MN (SNRB), MO (SNRB), MS (S5B), MS (S5B), MT (S5B), MT (S5B), NC (S5B), NC (S5B), ND (SNRB), NE (S5), NH (S5B), NJ (S4B), NM (S5B,S5N), NV (S5B), NY (S5), OH (S5), OK (S5B), OR (S5), PA (S5B), RI (S5B), SC (SNR), SD (S5B), SD (S5B), TN (S5), TX (S5B), UT (S5B), VA (S5), VT (S5B), VT (S5B), WA (S4S5B), WA (S4S5B), WI (S5B), WI (S5B), WV (S5B), WY (S5B), WY (S5B), AB (S5), BC (S3S4B), BC (S3S4B), LB (SNA), MB (S4B), MB (S4B), NB (S3B), NF (S1S2B), NS (S4B), NT (SNRB), NU (SNA), ON (S4B), PE (S3B), QC (S4B), SK (S5B,S5M), YT (S3B)

SUMMARY OF PREDICTED HABITAT BY MANAGMENT AND GAP PROTECTION STATUS:

	US FWS		US Forest Service		Tenn. Valley Author.		US DOD/ACOE	
	ha	%	ha	%	ha	%	ha	%
Status 1	57,015.4	< 1	552.3	< 1	0.0	0	0.0	0
Status 2	65,144.0	< 1	9,810.8	< 1	0.0	0	685.0	< 1
Status 3	1,167.5	< 1	144,359.6	< 1	30,551.8	< 1	228,349.4	< 1
Status 4	22.6	< 1	0.0	0	0.0	0	520.7	< 1
Total	123,349.4	< 1	154,722.8	< 1	30,551.8	< 1	229,555.1	< 1
	US Dept. of Energy		US Nat. Park Service		NOAA		Other Federal Lands	
	ha	%	ha	%	ha	%	ha	%
Status 1	0.0	0	196,964.0	< 1	1,062.8	< 1	5,238.0	< 1
Status 2	0.0	0	33,404.4	< 1	28,731.0	< 1	45.6	< 1
Status 3	6,073.9	< 1	147,916.6	< 1	0.0	0	4,183.1	< 1
Status 4	0.0	0	3.0	7	0.0	0	0.0	0
Total	6,073.9	< 1	378,288.2	< 1	29,793.8	< 1	9,466.7	< 1
	Native Am. Reserv.		State Park/Hist. Park		State WMA/Gameland		State Forest	
	ha	%	ha	%	ha	%	ha	%
Status 1	0.0	0	153.1	< 1	10.5	< 1	0.0	0
Status 2	0.0	0	1,098.4	< 1	423,883.3	1	58.2	< 1
Status 3	4,546.2	< 1	161,601.5	< 1	39,739.5	< 1	55,110.8	< 1
Status 4	0.0	0	0.0	0	23,400.2	< 1	4.1	< 1
Total	4,546.2	< 1	162,852.9	< 1	487,033.5	1	55,173.1	< 1
	State Coastal Reserve		ST Nat.Area/Preserve		Other State Lands		Private Cons. Easemt.	
	ha	%	ha	%	ha	%	ha	%
Status 1	0.0	0	1,394.7	< 1	0.0	0	0.0	0
Status 2	27,217.0	< 1	24,556.6	< 1	2.1	< 1	969.9	< 1
Status 3	0.0	0	5,961.0	< 1	14,319.8	< 1	43,646.0	< 1
Status 4	0.0	0	0.0	0	2,376.5	< 1	< 0.1	< 1
Total	27,217.0	< 1	31,912.3	< 1	16,698.4	< 1	44,616.1	< 1
	Private Land - No Res.		Water		Overall Total			
	ha	%	ha	%	ha	%		
Status 1	0.0	4	0.0	0	262,391.0	< 1		
Status 2	0.8	< 1	0.0	4	615,607.2	1		
Status 3	316.4	< 1	0.2	< 1	887,843.3	2		
Status 4	39,572,138.7	95	55,725.7	< 1	39,677,569.3	95		
Total	39,572,456.1	95	55,726.0	< 1	41,443,410.8	100		

GAP Status 1: An area having permanent protection from conversion of natural land cover and a mandated management plan in operation to maintain a natural state within which disturbance events (of natural type, frequency, and intensity) are allowed to proceed without interference or are mimicked through management.

GAP Status 2: An area having permanent protection from conversion of natural land cover and a mandated management plan in operation to maintain a primarily natural state, but which may receive use or management practices that degrade the quality of existing natural communities.

GAP Status 3: An area having permanent protection from conversion of natural land cover for the majority of the area, but subject to extractive uses of either a broad, low-intensity type or localized intense type. It also confers protection to federally listed endangered and threatened species throughout the area.

GAP Status 4: Lack of irrevocable easement or mandate to prevent conversion of natural habitat types to anthropogenic habitat types. Allows for intensive use throughout the tract. Also includes those tracts for which the existence of such restrictions or sufficient information to establish a higher status is unknown.

PREDICTED HABITAT MODEL(S):

Summer Model:

Habitat Description: Breeding habitat usually contains open areas (fields and meadows) for foraging, nest site almost exclusively in human made structures that include a vertical or horizontal substrate underneath some type of roof or ceiling and a body of water that provides mud for nest building. Forages in open areas over grassy pastures, plowed fields, etc...(Brown and Brown 1999). M. Rubino, 06Jan05.

Hydrography Mask:

Utilizes flowing water features with buffers of 500m from and 250m into selected water features.

Utilizes open water features with buffers of 500m from and 250m into selected water features.

Utilizes wet vegetation features with buffer of unlimited into selected vegetation features.

Selected Map Units:

Functional Group	Map Unit Name
Anthropogenic	Bare Sand
Anthropogenic	Bare Soil
Anthropogenic	Developed Open Space
Anthropogenic	High Intensity Developed
Anthropogenic	Low Intensity Developed
Anthropogenic	Medium Intensity Developed
Anthropogenic	Pasture/Hay
Anthropogenic	Quarry/Strip Mine/Gravel Pit
Anthropogenic	Row Crop
Anthropogenic	Successional Grassland/Herbaceous
Anthropogenic	Successional Grassland/Herbaceous (Other)
Anthropogenic	Successional Grassland/Herbaceous (Utility Swath)
Anthropogenic	Successional Shrub/Scrub (Clear Cut)
Anthropogenic	Successional Shrub/Scrub (Other)
Anthropogenic	Successional Shrub/Scrub (Utility Swath)
Brackish Tidal Marsh & Wetland	Atlantic Coastal Plain Central Salt and Brackish Tidal Marsh
Brackish Tidal Marsh & Wetland	Atlantic Coastal Plain Embayed Region Tidal Salt and Brackish Marsh
Brackish Tidal Marsh & Wetland	Atlantic Coastal Plain Indian River Lagoon Tidal Marsh
Brackish Tidal Marsh & Wetland	Atlantic Coastal Plain Northern Tidal Salt Marsh
Brackish Tidal Marsh & Wetland	Florida Big Bend Salt-Brackish Tidal Marsh
Brackish Tidal Marsh & Wetland	Mississippi Sound Salt and Brackish Tidal Marsh
Brackish Tidal Marsh & Wetland	South Florida Everglades Sawgrass Marsh
Brackish Tidal Marsh & Wetland	Southwest Florida Perched Barriers Salt Swamp and Lagoon - Marsh Modifier
Coastal Dune & Freshwater Wetland	Atlantic and Gulf Coastal Plain Interdunal Wetland
Coastal Dune & Freshwater Wetland	Atlantic Coastal Plain Northern Dune and Maritime Grassland
Coastal Dune & Freshwater Wetland	Atlantic Coastal Plain Southern Dune and Maritime Grassland
Coastal Dune & Freshwater Wetland	East Gulf Coastal Plain Dune and Coastal Grassland
Coastal Dune & Freshwater Wetland	Southwest Florida Dune and Coastal Grassland
Water	Open Water (Brackish/Salt)
Water	Open Water (Fresh)
Wetlands	Unconsolidated Shore (Lake/River/Pond)

CITATIONS: American Ornithologists' Union (AOU), Committee on Classification and Nomenclature. 1983. Check-list of North American Birds. Sixth Edition. American Ornithologists' Union, Allen Press, Inc., Lawrence, Kansas.

Bent, A.C. 1942. Life histories of North American flycatchers, larks, swallows, and their allies. U.S. National Museum Bulletin 179. Washington, DC.

Brown, C.R. and M.B. Brown. 1999. Barn swallow (*Hirundo rustica*). In A. Poole and F. Gill, eds., *The Birds of North America*, No. 452. The Academy of Natural Sciences, Philadelphia and The American Ornithologists' Union, Washington, DC.

Ehrlich, P.R., D.S. Dobkin, and D. Wheye. 1988. *The birder's handbook: a field guide to the natural history of North American birds*. Simon and Shuster, Inc., New York. xxx + 785 pp.

Godfrey, W.E. 1966. *The birds of Canada*. National Museums of Canada. Ottawa. 428 pp.

- Hagan, J.M., III, and D.W. Johnston, editors. 1992. Ecology and conservation of neotropical migrant landbirds. Smithsonian Institution Press, Washington, D.C. xiii + 609 pp.
- Harrison, C. 1978. A field guide to the nests, eggs and nestlings of North American birds. Collins, Cleveland, Ohio.
- Hilty, S.L., and W.L. Brown. 1986. A guide to the birds of Colombia. Princeton University Press, Princeton, New Jersey. 836 pp.
- Kaufman K. 1996. Lives of North American Birds. Boston, New York: Houghton Mifflin Company.
- Mitchell, W.A. 1988. Songbird nest boxes. Section 5.1.8, U.S. Army Corps of Engineers, Wildlife Resources Management Manual. Tech. Rep. EL-88-19. Waterways Experiment Station, Vicksburg, Mississippi. 48 pp.
- Moller, A. P. 1994. Sexual selection and the barn swallow. Oxford. 376 pp.
- National Geographic Society (NGS). 1983. Field guide to the birds of North America. National Geographic Society, Washington, D.C.
- Nicholson CP. 1997. Atlas of the breeding birds of Tennessee. Knoxville: University of Tennessee Press.
- Oberholser, H.C. 1974. The bird life of Texas. 2 vols. Univ. of Texas Press, Austin.
- Potter, E. F., J. F. Parnell, and R. P. Teulings. 1980. Birds of the Carolinas. Univ. North Carolina Press, Chapel Hill. 408 pp.
- Raffaele, H.A. 1983. A guide to the birds of Puerto Rico and the Virgin Islands. Fondo Educativo Interamericano, San Juan, Puerto Rico. 255 pp.
- Ridgely, R.S., and G. Tudor. 1989. The birds of South America. Vol. 1. The Oscine passerines. Univ. Texas Press, Austin. 516 pp.
- Robbins, C.S., D. Bystrak, and P.H. Geissler. 1986. The Breeding Bird Survey: its first fifteen years. U.S. Fish and Wildlife Serv. Resource Publ. 157. iii + 196 pp.
- Sauer, J.R., and S. Droege. 1992. Geographical patterns in population trends of neotropical migrants in North America. Pages 26-42 in J.M. Hagan III and D.W. Johnston, editors. Ecology and conservation of neotropical migrant landbirds. Smithsonian Institution
- Sheldon, F. H., and D. W. Winkler. 1993. Intergeneric phylogenetic relationships of swallows estimated by DNA-DNA hybridization. *Auk* 110:798-824.
- Shields, W. M. 1984. Factors affecting nest and site fidelity in Adirondack barn swallows (*HIRUNDO RUSTICA*). *Auk* 101:780-789.
- Stiles, F.G., and A.F. Skutch. 1989. A guide to the birds of Costa Rica. Comstock Publ. Associates, Cornell University Press, Ithaca, New York. 511 pp.
- Terres, J.K. 1980. The Audubon Society encyclopedia of North American birds. Alfred A. Knopf, New York.
- Turner, A., and C. Rose. 1989. Swallows and martins an identification guide. Houghton Mifflin Co., Boston.
- Winkler, D. W., and J. P. McCarty. 1990. Method for transplanting nests of barn swallows. *J. Field Ornithol.* 61:426-430.
- Zink, R. M., S. Rohwer, A. V. Andreev, and D. L. Dittman. 1995. Trans-Beringia comparisons of mitochondrial DNA differentiation in birds. *Condor* 97:639-649.