

SOUTHEAST GAP ANALYSIS PROJECT



Species Modeling Report

Bank Swallow

Riparia riparia

Taxa: Avian

Order: Passeriformes

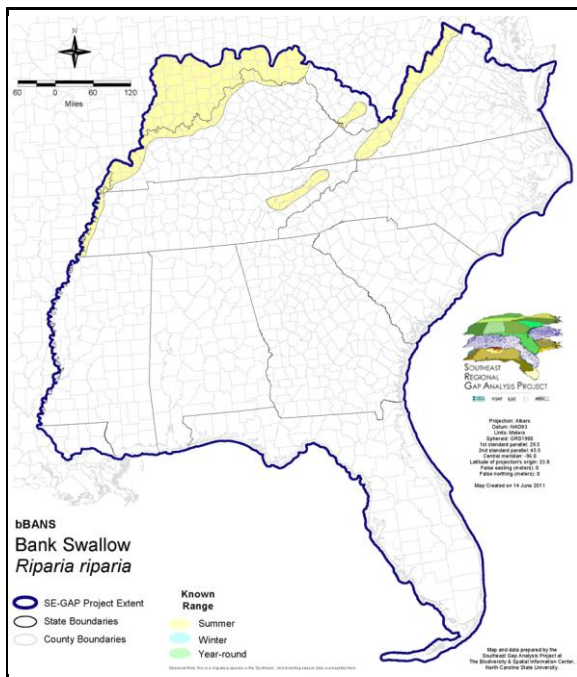
Family: Hirundinidae

SE-GAP Spp Code: **bBANS**

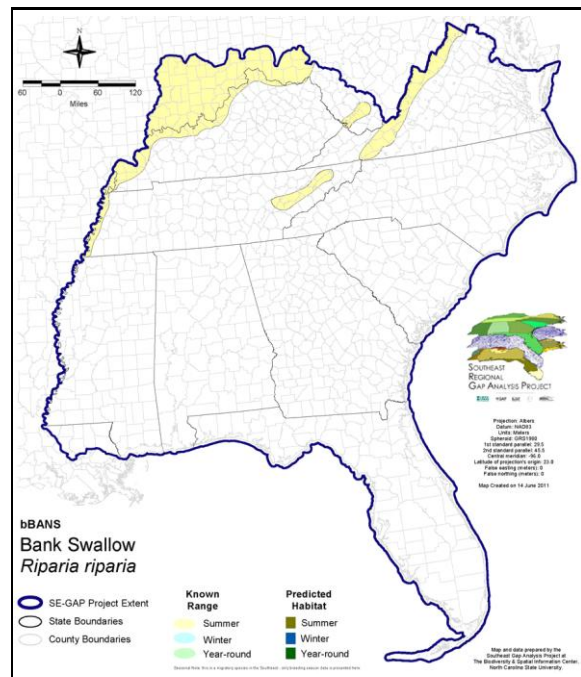
ITIS Species Code: 178436

NatureServe Element Code: ABPAU08010

KNOWN RANGE:



PREDICTED HABITAT:



Range Map Link: http://www.basic.ncsu.edu/segap/datazip/maps/SE_Range_bBANS.pdf

Predicted Habitat Map Link: http://www.basic.ncsu.edu/segap/datazip/maps/SE_Dist_bBANS.pdf

GAP Online Tool Link: <http://www.gapservice.ncsu.edu/segap/segap/index2.php?species=bBANS>

Data Download: http://www.basic.ncsu.edu/segap/datazip/region/vert/bBANS_se00.zip

PROTECTION STATUS:

Reported on March 14, 2011

Federal Status: ---

State Status: CA (Threatened), ID (P), ID (P), KY (S), MA (- WL), NC (SR), NC (SR), NH (SC), NJ (S/S), NV (YES), NY (PB), RI (Not Listed), UT (None), BC (4 (2005)), QC (Non suivie)

NS Global Rank: G5

NS State Rank: AK (S5B), AL (SHB), AR (S2B,S3N), AZ (S4M), CA (S2S3), CO (S5), CT (S5B), CT (S5B), DC (S3N), DE (S2B), FL (SNA), GA (S3S4), IA (S5B,S5N), ID (S5B), ID (S5B), IL (S5), IN (S4B), KS (S2S3B), KY (S3B), LA (SNA), MA (S5B), MD (S3S4B), ME (S5B), MI (S5), MN (SNRB), MO (SNRB), MS (S1?B), MS (S1?B), MT (S5B), MT (S5B), NC (S1B), NC (S1B), ND (SNRB), NE (S5), NH (S3B), NJ (S4B), NM (S2B,S5N), NV (S3B), NY (S5), OH (S4), OK (S2B), OR (S4B), PA (S4B), RI (S3B), SC (SNA), SC (SNA), SD (S3B), SD (S3B), TN (S3), TX (S2B,S4N), UT (S4B), VA (S3B), VA (S3B), VT (S5B), VT (S5B), WA (S4B), WA (S4B), WI (S5B), WI (S5B), WV (S2B), WY (S5B), WY (S5B), AB (S5), BC (S4S5B), LB (S3B), MB (S4B), MB (S4B), NB (S3B), NF (S3B), NS (S4B), NT (SNRB), ON (S4B), PE (S5B), QC (S4B), SK (S5B,S5M), YT (S5B)

SUMMARY OF PREDICTED HABITAT BY MANAGMENT AND GAP PROTECTION STATUS:

	US FWS		US Forest Service		Tenn. Valley Author.		US DOD/ACOE	
	ha	%	ha	%	ha	%	ha	%
Status 1	0.0	0	12.2	< 1	0.0	0	0.0	0
Status 2	0.0	0	2,195.9	14	0.0	0	0.0	0
Status 3	0.0	0	4,213.9	27	17.5	< 1	67.1	< 1
Status 4	0.0	0	0.0	0	0.0	0	0.0	0
Total	0.0	0	6,422.0	41	17.5	< 1	67.1	< 1
	US Dept. of Energy		US Nat. Park Service		NOAA		Other Federal Lands	
	ha	%	ha	%	ha	%	ha	%
Status 1	0.0	0	0.0	0	0.0	0	0.0	0
Status 2	0.0	0	0.0	0	0.0	0	0.0	0
Status 3	7.2	< 1	1.0	< 1	0.0	0	0.0	0
Status 4	0.0	0	0.0	0	0.0	0	0.0	0
Total	7.2	< 1	1.0	< 1	0.0	0	0.0	0
	Native Am. Reserv.		State Park/Hist. Park		State WMA/Gameland		State Forest	
	ha	%	ha	%	ha	%	ha	%
Status 1	0.0	0	0.0	0	0.0	0	0.0	0
Status 2	0.0	0	0.0	0	240.8	2	0.0	0
Status 3	0.0	0	46.1	< 1	1.2	< 1	0.6	< 1
Status 4	0.0	0	0.0	0	0.0	0	0.0	0
Total	0.0	0	46.1	< 1	241.9	2	0.6	< 1
	State Coastal Reserve		ST Nat.Area/Preserve		Other State Lands		Private Cons. Easemt.	
	ha	%	ha	%	ha	%	ha	%
Status 1	0.0	0	0.0	0	0.0	0	0.0	0
Status 2	0.0	0	3.1	< 1	0.0	0	0.0	0
Status 3	0.0	0	0.0	0	0.0	0	0.0	0
Status 4	0.0	0	0.0	0	0.2	< 1	0.0	0
Total	0.0	0	3.1	< 1	0.2	< 1	0.0	0
	Private Land - No Res.		Water		Overall Total			
	ha	%	ha	%	ha	%	ha	%
Status 1	0.0	0	0.0	0	12.2	< 1		
Status 2	0.0	0	0.0	0	2,439.7	16		
Status 3	0.0	0	0.0	0	4,354.6	55		
Status 4	4,505.7	29	10.2	< 1	4,516.0	29		
Total	4,505.7	29	10.2	< 1	11,322.5	100		

GAP Status 1: An area having permanent protection from conversion of natural land cover and a mandated management plan in operation to maintain a natural state within which disturbance events (of natural type, frequency, and intensity) are allowed to proceed without interference or are mimicked through management.

GAP Status 2: An area having permanent protection from conversion of natural land cover and a mandated management plan in operation to maintain a primarily natural state, but which may receive use or management practices that degrade the quality of existing natural communities.

GAP Status 3: An area having permanent protection from conversion of natural land cover for the majority of the area, but subject to extractive uses of either a broad, low-intensity type or localized intense type. It also confers protection to federally listed endangered and threatened species throughout the area.

GAP Status 4: Lack of irrevocable easement or mandate to prevent conversion of natural habitat types to anthropogenic habitat types. Allows for intensive use throughout the tract. Also includes those tracts for which the existence of such restrictions or sufficient information to establish a higher status is unknown.

PREDICTED HABITAT MODEL(S):

Summer Model:

Habitat Description: "Presently breeds primarily in lowland areas along ocean coasts, rivers, streams, lakes, reservoirs, and wetlands. Vertical banks, cliffs, and bluffs in alluvial, friable soils characterize nesting colony sites. Nesting colonies also found in artificial sites such as sand and gravel quarries and road cuts. Historically, all colonies in North America were found in natural sites such as banks along rivers, streams, lakes and coasts; today, many colonies are in human-made sites (Cramp et al. 1988, Turner and Rose 1989, Am. Ornithol. Union 1998). Forages aerially over lakes, ponds, rivers and streams, meadows, fields, pastures, and bogs (Stoner 1936, Gross 1942, Turner and Rose 1989)." (quoted directly from Garrison 1999). M. Rubino, 06jan05.

Hydrography Mask:

Freshwater Only

Utilizes flowing water features with buffers of 500m from and 250m into selected water features.

Utilizes open water features with buffers of 500m from and 250m into selected water features.

Selected Map Units:

Functional Group	Map Unit Name
Anthropogenic	Bare Sand
Anthropogenic	Bare Soil
Anthropogenic	Developed Open Space
Anthropogenic	Low Intensity Developed
Anthropogenic	Pasture/Hay
Anthropogenic	Quarry/Strip Mine/Gravel Pit
Anthropogenic	Row Crop
Anthropogenic	Successional Grassland/Herbaceous
Anthropogenic	Successional Grassland/Herbaceous (Other)
Anthropogenic	Successional Grassland/Herbaceous (Utility Swath)
Prairie	Bluegrass Basin Savanna and Woodland
Prairie	Eastern Highland Rim Prairie and Barrens
Prairie	Eastern Highland Rim Prairie and Barrens - Dry Modifier
Rock Outcrop	Allegheny-Cumberland Sandstone Box Canyon and Rockhouse
Rock Outcrop	Central Interior Acidic Cliff and Talus
Rock Outcrop	Central Interior Calcareous Cliff and Talus
Rock Outcrop	North-Central Appalachian Acidic Cliff and Talus
Rock Outcrop	North-Central Appalachian Circumneutral Cliff and Talus
Water	Open Water (Fresh)
Wetlands	Central Interior Highlands and Appalachian Sinkhole and Depression Pond
Wetlands	North-Central Appalachian Seepage Fen
Wetlands	Southern and Central Appalachian Bog and Fen

CITATIONS: American Ornithologists' Union (AOU), Committee on Classification and Nomenclature. 1983. Check-list of North American Birds. Sixth Edition. American Ornithologists' Union, Allen Press, Inc., Lawrence, Kansas.

American Ornithologists' Union. 1998. Check-list of North American birds. 7th ed. Am. Ornithol. Union, Washington, D.C..

Byrd, M.A., and D.W. Johnston. 1991. Birds. Pages 477-537 in K. Terwilliger, coordinator. Virginia's endangered species: proceedings of a symposium. McDonald and Woodward Publ. Co., Blacksburg, Virginia.

California Department of Fish and Game. 1990. 1989 annual report on the status of California's state listed threatened and endangered plants and animals. 188 pp.

Cramp, S., D. J. Brooks, E. Dunn, R. Gillmor and J. Hall-Craggs. 1988. The birds of the western Palearctic. Vol. 5: tyrant flycatchers to thrushes. Oxford Univ. Press, Oxford, UK..

Garrison, Barrett A. 1999. Bank Swallow (*Riparia riparia*), The Birds of North America Online (A. Poole, Ed.). Ithaca: Cornell Lab of Ornithology; No.414.

Godfrey, W.E. 1966. The birds of Canada. National Museums of Canada. Ottawa. 428 pp.

Gross, A. O. 1942. Bank swallow. Pp. 400-424 in Life histories of North American flycatchers, larks, swallows, and their allies (A. C. Bent, ed.). U.S. Natl. Mus. Bull. 179..

- Harrison, C. 1978. A field guide to the nests, eggs and nestlings of North American birds. Collins, Cleveland, Ohio.
- Hilty, S.L., and W.L. Brown. 1986. A guide to the birds of Colombia. Princeton University Press, Princeton, New Jersey. 836 pp.
- National Geographic Society (NGS). 1983. Field guide to the birds of North America. National Geographic Society, Washington, D.C.
- Potter, E. F., J. F. Parnell, and R. P. Teulings. 1980. Birds of the Carolinas. Univ. North Carolina Press, Chapel Hill. 408 pp.
- Raffaele, H.A. 1983. A guide to the birds of Puerto Rico and the Virgin Islands. Fondo Educativo Interamericano, San Juan, Puerto Rico. 255 pp.
- Robbins, C.S., D. Bystrak, and P.H. Geissler. 1986. The Breeding Bird Survey: its first fifteen years. U.S. Fish and Wildlife Serv. Resource Publ. 157. iii + 196 pp.
- Sheldon, F. H., and D. W. Winkler. 1993. Intergeneric phylogenetic relationships of swallows estimated by DNA-DNA hybridization. Auk 110:798-824.
- Stiles, F.G., and A.F. Skutch. 1989. A guide to the birds of Costa Rica. Comstock Publ. Associates, Cornell University Press, Ithaca, New York. 511 pp.
- Stoner, D. 1936. Studies on the bank swallow *Riparia riparia* (Linnaeus) in the Oneida Lake region. Roosevelt Wild Life Annals 4(2), 112 pp.
- Terres, J.K. 1980. The Audubon Society encyclopedia of North American birds. Alfred A. Knopf, New York.
- Turner, A., and C. Rose. 1989. Swallows and martins an identification guide. Houghton Mifflin Co., Boston.

For more information:: SE-GAP Analysis Project / BaSIC
127 David Clark Labs
Dept. of Biology, NCSU
Raleigh, NC 27695-7617
(919) 513-2853
www.basic.ncsu.edu/segap

Compiled: 15 September 2011

This data was compiled and/or developed
by the Southeast GAP Analysis Project at
The Biodiversity and Spatial Information
Center, North Carolina State University.