



# SOUTHEAST GAP ANALYSIS PROJECT



## Species Modeling Report

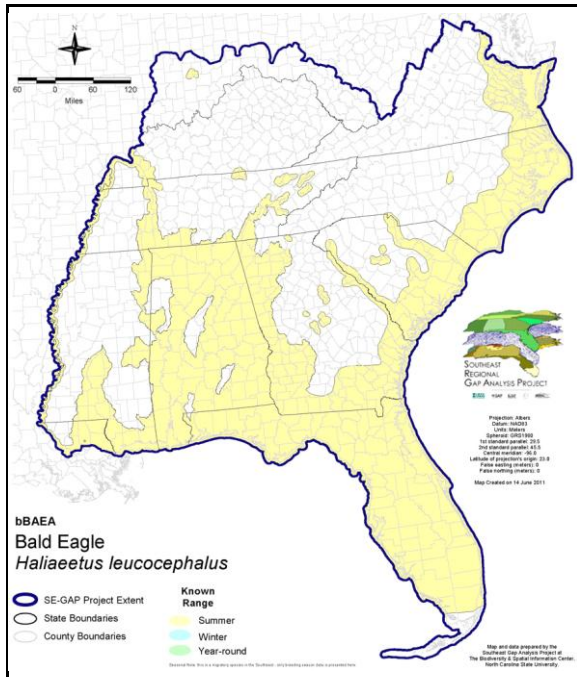
### Bald Eagle

*Haliaeetus leucocephalus*

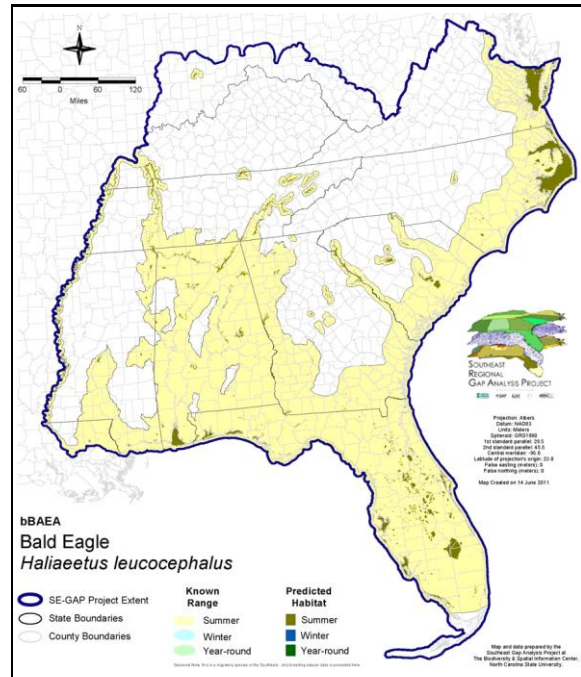
Taxa: Avian  
 Order: Falconiformes  
 Family: Accipitridae

SE-GAP Spp Code: **bBAEA**  
 ITIS Species Code: 175420  
 NatureServe Element Code: ABNKC10010

#### KNOWN RANGE:



#### PREDICTED HABITAT:



Range Map Link: [http://www.basic.ncsu.edu/segap/datazip/maps/SE\\_Range\\_bBAEA.pdf](http://www.basic.ncsu.edu/segap/datazip/maps/SE_Range_bBAEA.pdf)

Predicted Habitat Map Link: [http://www.basic.ncsu.edu/segap/datazip/maps/SE\\_Dist\\_bBAEA.pdf](http://www.basic.ncsu.edu/segap/datazip/maps/SE_Dist_bBAEA.pdf)

GAP Online Tool Link: <http://www.gapservice.ncsu.edu/segap/segap/index2.php?species=bBAEA>

Data Download: [http://www.basic.ncsu.edu/segap/datazip/region/vert/bBAEA\\_se00.zip](http://www.basic.ncsu.edu/segap/datazip/region/vert/bBAEA_se00.zip)

#### PROTECTION STATUS:

Reported on March 14, 2011

Federal Status: ---

State Status: AL (SP), AZ (WSC), CA (Endangered), CO (ST), CT (T), DE (E), GA (T), IA (S), ID (P), IL (RT), IN (SE), KY (T), LA (Endangered), MA (E), ME (SC), MI (SC), MN (SPC), MS (LE), NC (T), ND (Level II), NE (T), NH (T), NJ (E), NM (T), NV (YES), NY (T), OH (T), OR (LT), PA (PT), RI (State Endangered), RI (State Endangered), SC (ST-Threatened), SD (ST), TN (D), TX (T), UT (SPC), VA (LT), VT (E), WA (S), WI (SC/P), BC (4 (2005)), NB (Reg.Endangered), ON (SC), ON (SC), QC (Vulnerable)

NS Global Rank: G5

NS State Rank: AK (S5), AL (S3B), AR (S2B,S4N), AZ (S2S3B,S4N), CA (S2), CO (S1B,S3N), CT (S1B,S3N), DC (S2N,SXB), DC (S2N,SXB), DE (S2B,S3N), FL (S3), GA (S2), IA (S3B,S3N), ID (S3B,S4N), IL (S2B,S3N), IN (S2), KS (S2B,S4N), KY (S2B,S2S3N), LA (S2N,S3B), MA (S2B,S3N), MD (S2S3B), ME (S4B,S4N), MI (S4), MN (S3B,S3N), MO (S3), MS (S2B,S2N), MT (S3), NC (S3B,S3N), ND (S1), NE (S3), NH (S2), NJ (S1B,S1N), NM (S1B,S4N), NV (S1B,S3N), NY (S2S3B,S2N), OH (S2), OK (S1S3), OR (S4B,S4N), PA (S2B), RI (S1B,S1N), RI (S1B,S1N), SC (S2), SD (S1B,S2N), TN (S3), TX (S3B,S3N), UT (S1B,S3N), VA (S2S3B,S3N), VT (S1B,S2N), WA (S4B,S4N), WI (S4B,S2N), WV (S2B,S3N), WY (S3B,S5N), AB (S4), BC

(S5B,S5N), LB (S4B), MB (S4S5B), MB (S4S5B), NB (S3B), NF (S4B), NS (S5B,S4N), NT (SNRB), NU (SNRN), ON (S2N,S4B),  
ON (S2N,S4B), PE (S4B), QC (S3S4B), SK (S5B,S4M,S4N), YT (S4B)



**SUMMARY OF PREDICTED HABITAT BY MANAGMENT AND GAP PROTECTION STATUS:**

	US FWS		US Forest Service		Tenn. Valley Author.		US DOD/ACOE	
	ha	%	ha	%	ha	%	ha	%
Status 1	37,171.1	5	0.0	0	0.0	0	0.0	0
Status 2	25,770.8	3	1,620.3	< 1	0.0	0	0.0	0
Status 3	1,911.2	< 1	8,427.8	1	21,361.1	3	16,737.9	2
Status 4	0.0	0	0.0	0	0.0	0	0.0	0
Total	64,853.0	8	10,048.1	1	21,361.1	3	16,737.9	2
	US Dept. of Energy		US Nat. Park Service		NOAA		Other Federal Lands	
	ha	%	ha	%	ha	%	ha	%
Status 1	0.0	0	20,809.0	3	857.8	< 1	4,037.9	< 1
Status 2	0.0	0	23,884.7	3	12,608.9	2	71.4	< 1
Status 3	375.3	< 1	800.6	< 1	0.0	0	0.0	0
Status 4	0.0	0	4.0	0	0.0	0	0.0	0
Total	375.3	< 1	45,499.1	6	13,466.7	2	4,109.3	< 1
	Native Am. Reserv.		State Park/Hist. Park		State WMA/Gameland		State Forest	
	ha	%	ha	%	ha	%	ha	%
Status 1	0.0	0	0.6	< 1	0.0	0	0.0	0
Status 2	0.0	0	72.1	< 1	24,049.3	3	0.0	0
Status 3	0.0	0	43,362.3	5	9,122.0	1	3,497.9	< 1
Status 4	0.0	0	0.0	0	2,141.4	< 1	0.0	0
Total	0.0	0	43,435.0	5	35,312.6	4	3,497.9	< 1
	State Coastal Reserve		ST Nat.Area/Preserve		Other State Lands		Private Cons. Easemt.	
	ha	%	ha	%	ha	%	ha	%
Status 1	0.0	0	594.1	< 1	0.0	0	0.0	0
Status 2	13,068.8	2	10,830.2	1	0.0	0	135.9	< 1
Status 3	0.0	0	367.7	< 1	1,213.8	< 1	678.8	< 1
Status 4	0.0	0	0.0	0	3.7	< 1	0.0	0
Total	13,068.8	2	11,792.0	1	1,217.5	< 1	814.7	< 1
	Private Land - No Res.		Water		Overall Total			
	ha	%	ha	%	ha	%	ha	%
Status 1	0.0	2	0.0	0	63,470.7 8			
Status 2	0.8	< 1	0.0	4	112,113.5 14			
Status 3	12.1	< 1	1.1	< 1	107,869.4 14			
Status 4	468,127.3	58	38,929.1	5	511,347.5 64			
Total	468,140.3	58	38,930.6	5	794,801.1 100			

GAP Status 1: An area having permanent protection from conversion of natural land cover and a mandated management plan in operation to maintain a natural state within which disturbance events (of natural type, frequency, and intensity) are allowed to proceed without interference or are mimicked through management.

GAP Status 2: An area having permanent protection from conversion of natural land cover and a mandated management plan in operation to maintain a primarily natural state, but which may receive use or management practices that degrade the quality of existing natural communities.

GAP Status 3: An area having permanent protection from conversion of natural land cover for the majority of the area, but subject to extractive uses of either a broad, low-intensity type or localized intense type. It also confers protection to federally listed endangered and threatened species throughout the area.

GAP Status 4: Lack of irrevocable easement or mandate to prevent conversion of natural habitat types to anthropogenic habitat types. Allows for intensive use throughout the tract. Also includes those tracts for which the existence of such restrictions or sufficient information to establish a higher status is unknown.

## PREDICTED HABITAT MODEL(S):

### Summer Model:

Habitat Description: Breeding habitat most commonly includes areas within 4km coastal areas, bays, rivers, lakes, or other bodies of water that reflect the general availability of primary food sources including fish, waterfowl, and seabirds (Andrew and Mosher 1982, Green 1985, Campbell et al. 1990). They forage near and over salt and freshwater - estuaries, lakes, open marshes, and shorelines (Hamel 1992). Most nest in live or dead pine trees (Collopy 1987), but also use cypress and mangrove trees (Layne et al. 1977, Kayle 1978). Marsh, water, and hardwoods habitats were used in proportion to availability. Cypress was significantly utilized because of its location along most lake edges (Wood & Collopy 1991). The top three preferred habitats for perching, flying, and soaring were cypress swamps (19.8%), pinewoods (19.2%), and hardwoods (15.7%). Other commonly used habitats were marshes (14.0%), lakes (11.9%), pastures with trees (9.8%), and pastures/clearcuts (4.0/3.6%) (Wood 1992).

Their nest can weigh more than 100 lbs and is thus usually in mature trees (Brown and Amadon 1968). Normally it is the largest tree, taller than the surrounding stand, thus providing an easy flight path and open view of the nesting area. (Palmer 1988, Johnsgard 1990) Location of the nest is rarely in deep woods, but rather along the edge of the forest stand. (Hamel 1992, Palmer 1988) Like the nest tree, roosting and perching trees are among the tallest in the stand (Palmer 1988). Mature conifer and old-growth forests were selected during low and high tides, bottomland broadleaf trees on river islands were used for hunting perches. High use areas were shoreline habitat with large perch trees that offered an unobstructed view of foraging areas. Tree structure was more important than tree species (Garret et. Al. 1993).

Avoids areas with nearby human activity (boat traffic, pedestrians) and development (buildings) (Buehler et al. 1991).

Regarding spatial habitat characteristics, average nest distance to water is 576 m in north Florida and 1.48 km in central Florida. Most nests are within 3 km of open water greater than 10 ha in size (Collopy 1987). Home range size of resident pairs averaged 22 square km for breeding and nonbreeding periods with a range of 6-47 square km. Core areas averaged 0.1-1.0 square km (Garret et. Al. 1993).

Quoted directly from existing state habitat notes - K. Cook, 11Feb05

#### Additional information:

Stinson et al. (2001) Found that in Washington State bald eagles foraged and average of 500m over water from the shore (Buehler 2000).K. Cook, 11Feb05

Customized Model: Model: Difficult to model because respond to fine-scale habitat variables of old growth forest stands and trees. Buffer "large" water bodies and rivers to predict habitat. Water variables - dist to, density, (nests loc. Near water can be quite far if no suitable nest trees) old mature forests with structure, completely avoid young forest stands & single age stands (not in pine or deciduous plantations), do not forage in forest, forage in open areas esp water and shorelines but will hunt in grasslands & agriculture (Stalmaster 1987). I could not find any information on water body size requirements (30 ha. Min. size is a best guess).

Handmodeling tasks -

DO NOT BUFFER OUT INTO OCEAN - they use shore.

Only use Primary Map Units (water) to calculate contiguous patch size.

Mask of Forest Interior Avoidance: Exclude forest interiors with 120m buffer into them.

Avoidance Mask: Medium - moderately intolerant of human disturbance.

Hydrography Mask:

Utilizes flowing water features with buffers of 500m from and unlimited into selected water features.

Utilizes open water features with buffers of 500m from and unlimited into selected water features.

Contiguous Patch Minimum Size (hectares): 10

#### Selected Map Units:

Functional Group	Map Unit Name
Beach	Atlantic Coastal Plain Northern Sandy Beach

Beach	Atlantic Coastal Plain Sea Island Beach
Beach	Atlantic Coastal Plain Southern Beach
Beach	Florida Panhandle Beach Vegetation
Beach	South Florida Shell Hash Beach
Beach	Southwest Florida Beach
Beach	Unconsolidated Shore (Beach/Dune)
Brackish Tidal Marsh & Wetland	Atlantic Coastal Plain Central Salt and Brackish Tidal Marsh
Brackish Tidal Marsh & Wetland	Atlantic Coastal Plain Embayed Region Tidal Salt and Brackish Marsh
Brackish Tidal Marsh & Wetland	Atlantic Coastal Plain Indian River Lagoon Tidal Marsh
Brackish Tidal Marsh & Wetland	Atlantic Coastal Plain Northern Sea-Level Fen
Brackish Tidal Marsh & Wetland	Atlantic Coastal Plain Northern Tidal Salt Marsh
Brackish Tidal Marsh & Wetland	Atlantic Coastal Plain Northern Tidal Wooded Swamp
Brackish Tidal Marsh & Wetland	Atlantic Coastal Plain Southern Tidal Wooded Swamp
Brackish Tidal Marsh & Wetland	East Gulf Coastal Plain Tidal Wooded Swamp
Brackish Tidal Marsh & Wetland	Florida Big Bend Salt-Brackish Tidal Marsh
Brackish Tidal Marsh & Wetland	Mississippi Sound Salt and Brackish Tidal Marsh
Brackish Tidal Marsh & Wetland	South Florida Everglades Sawgrass Marsh
Brackish Tidal Marsh & Wetland	South Florida Mangrove Swamp
Brackish Tidal Marsh & Wetland	Southwest Florida Perched Barriers Salt Swamp and Lagoon - Mangrove Modifier
Brackish Tidal Marsh & Wetland	Southwest Florida Perched Barriers Salt Swamp and Lagoon - Marsh Modifier
Coastal Dune & Freshwater Wetland	Atlantic and Gulf Coastal Plain Interdunal Wetland
Coastal Dune & Freshwater Wetland	Atlantic Coastal Plain Northern Dune and Maritime Grassland
Coastal Dune & Freshwater Wetland	Atlantic Coastal Plain Southern Dune and Maritime Grassland
Coastal Dune & Freshwater Wetland	East Gulf Coastal Plain Dune and Coastal Grassland
Coastal Dune & Freshwater Wetland	Southwest Florida Dune and Coastal Grassland
Forest/Woodland	Allegheny-Cumberland Dry Oak Forest and Woodland
Forest/Woodland	Allegheny-Cumberland Dry Oak Forest and Woodland - Hardwood Modifier
Forest/Woodland	Allegheny-Cumberland Dry Oak Forest and Woodland - Pine Modifier
Forest/Woodland	Appalachian Hemlock-Hardwood Forest
Forest/Woodland	Atlantic Coastal Plain Central Maritime Forest
Forest/Woodland	Atlantic Coastal Plain Dry and Dry-Mesic Oak Forest
Forest/Woodland	Atlantic Coastal Plain Fall-Line Sandhills Longleaf Pine Woodland - Loblolly Modifier
Forest/Woodland	Atlantic Coastal Plain Fall-line Sandhills Longleaf Pine Woodland - Offsite Hardwood Modifier
Forest/Woodland	Atlantic Coastal Plain Fall-line Sandhills Longleaf Pine Woodland - Scrub/Shrub Understory Modifier
Forest/Woodland	Atlantic Coastal Plain Mesic Hardwood and Mixed Forest
Forest/Woodland	Atlantic Coastal Plain Northern Maritime Forest
Forest/Woodland	Atlantic Coastal Plain Northern Mixed Oak-Heath Forest
Forest/Woodland	Atlantic Coastal Plain Southern Maritime Forest
Forest/Woodland	Central and Southern Appalachian Montane Oak Forest
Forest/Woodland	Central and Southern Appalachian Northern Hardwood Forest
Forest/Woodland	Central and Southern Appalachian Spruce-Fir Forest
Forest/Woodland	Central Appalachian Oak and Pine Forest
Forest/Woodland	Central Appalachian Pine-Oak Rocky Woodland
Forest/Woodland	East Gulf Coastal Plain Interior Shortleaf Pine-Oak Forest - Hardwood Modifier
Forest/Woodland	East Gulf Coastal Plain Interior Shortleaf Pine-Oak Forest - Mixed Modifier
Forest/Woodland	East Gulf Coastal Plain Interior Shortleaf Pine-Oak Forest - Pine Modifier
Forest/Woodland	East Gulf Coastal Plain Interior Upland Longleaf Pine Woodland - Loblolly Modifier
Forest/Woodland	East Gulf Coastal Plain Interior Upland Longleaf Pine Woodland - Offsite Hardwood Modifier
Forest/Woodland	East Gulf Coastal Plain Interior Upland Longleaf Pine Woodland - Scrub/Shrub Modifier
Forest/Woodland	East Gulf Coastal Plain Limestone Forest
Forest/Woodland	East Gulf Coastal Plain Maritime Forest
Forest/Woodland	East Gulf Coastal Plain Northern Dry Upland Hardwood Forest
Forest/Woodland	East Gulf Coastal Plain Northern Loess Bluff Forest
Forest/Woodland	East Gulf Coastal Plain Northern Loess Plain Oak-Hickory Upland - Hardwood Modifier
Forest/Woodland	East Gulf Coastal Plain Northern Loess Plain Oak-Hickory Upland - Juniper Modifier
Forest/Woodland	East Gulf Coastal Plain Northern Mesic Hardwood Forest

Forest/Woodland	East Gulf Coastal Plain Southern Loess Bluff Forest
Forest/Woodland	East Gulf Coastal Plain Southern Mesic Slope Forest
Forest/Woodland	Florida Longleaf Pine Sandhill - Scrub/Shrub Understory Modifier
Forest/Woodland	Mississippi Delta Maritime Forest
Forest/Woodland	Northeastern Interior Dry Oak Forest - Mixed Modifier
Forest/Woodland	Northeastern Interior Dry Oak Forest - Virginia/Pitch Pine Modifier
Forest/Woodland	Northeastern Interior Dry Oak Forest-Hardwood Modifier
Forest/Woodland	Northern Atlantic Coastal Plain Dry Hardwood Forest
Forest/Woodland	South Florida Pine Rockland
Forest/Woodland	South-Central Interior Mesophytic Forest
Forest/Woodland	Southeast Florida Coastal Strand and Maritime Hammock
Forest/Woodland	Southeastern Interior Longleaf Pine Woodland
Forest/Woodland	Southern and Central Appalachian Cove Forest
Forest/Woodland	Southern and Central Appalachian Oak Forest
Forest/Woodland	Southern and Central Appalachian Oak Forest - Xeric
Forest/Woodland	Southern Appalachian Low Mountain Pine Forest
Forest/Woodland	Southern Appalachian Montane Pine Forest and Woodland
Forest/Woodland	Southern Coastal Plain Dry Upland Hardwood Forest
Forest/Woodland	Southern Coastal Plain Oak Dome and Hammock
Forest/Woodland	Southern Interior Low Plateau Dry-Mesic Oak Forest
Forest/Woodland	Southern Interior Low Plateau Dry-Mesic Oak Forest - Evergreen Modifier
Forest/Woodland	Southern Piedmont Dry Oak-(Pine) Forest - Hardwood Modifier
Forest/Woodland	Southern Piedmont Dry Oak-(Pine) Forest - Loblolly Pine Modifier
Forest/Woodland	Southern Piedmont Dry Oak-(Pine) Forest - Mixed Modifier
Forest/Woodland	Southern Piedmont Dry Oak-Heath Forest - Hardwood Modifier
Forest/Woodland	Southern Piedmont Dry Oak-Heath Forest - Mixed Modifier
Forest/Woodland	Southern Piedmont Dry Oak-Heath Forest - Virginia/Pitch Pine Modifier
Forest/Woodland	Southern Piedmont Mafic Hardpan Woodland
Forest/Woodland	Southern Piedmont Mesic Forest
Forest/Woodland	Southern Piedmont Northern Triassic Basin Dry Forest
Forest/Woodland	Southern Ridge and Valley Dry Calcareous Forest
Forest/Woodland	Southern Ridge and Valley Dry Calcareous Forest - Hardwood Modifier
Forest/Woodland	Southern Ridge and Valley Dry Calcareous Forest - Pine Modifier
Forest/Woodland	Southwest Florida Coastal Strand and Maritime Hammock
Freshwater Tidal Marsh & Wetland	Atlantic Coastal Plain Central Fresh-Oligohaline Tidal Marsh
Freshwater Tidal Marsh & Wetland	Atlantic Coastal Plain Embayed Region Tidal Freshwater Marsh
Freshwater Tidal Marsh & Wetland	Atlantic Coastal Plain Northern Fresh and Oligohaline Tidal Marsh
Freshwater Tidal Marsh & Wetland	Florida Big Bend Fresh-Oligohaline Tidal Marsh
Water	Open Water (Aquaculture)
Water	Open Water (Brackish/Salt)
Water	Open Water (Fresh)
Wetlands	Atlantic Coastal Plain Clay-Based Carolina Bay Forested Wetland
Wetlands	Atlantic Coastal Plain Clay-Based Carolina Bay Herbaceous Wetland
Wetlands	Atlantic Coastal Plain Depression Pondshore
Wetlands	Atlantic Coastal Plain Large Natural Lakeshore
Wetlands	Atlantic Coastal Plain Nonriverine Swamp and Wet Hardwood Forest - Taxodium/Nyssa Modifier
Wetlands	Atlantic Coastal Plain Nonriverine Swamp and Wet Hardwood Forest - Oak Dominated Modifier
Wetlands	Atlantic Coastal Plain Northern Basin Peat Swamp
Wetlands	Atlantic Coastal Plain Northern Basin Swamp and Wet Hardwood Forest
Wetlands	Atlantic Coastal Plain Northern Pondshore
Wetlands	Atlantic Coastal Plain Northern Wet Longleaf Pine Savanna and Flatwoods
Wetlands	Atlantic Coastal Plain Peatland Pocosin
Wetlands	Atlantic Coastal Plain Sandhill Seep
Wetlands	Atlantic Coastal Plain Southern Wet Pine Savanna and Flatwoods
Wetlands	Atlantic Coastal Plain Streamhead Seepage Swamp, Pocosin, and Baygall
Wetlands	Atlantic Coastal Plain Xeric River Dune

Wetlands	Central Appalachian Floodplain - Forest Modifier
Wetlands	Central Appalachian Floodplain - Herbaceous Modifier
Wetlands	Central Appalachian Riparian - Forest Modifier
Wetlands	Central Appalachian Riparian - Herbaceous Modifier
Wetlands	Central Florida Herbaceous Pondshore
Wetlands	Central Florida Herbaceous Seep
Wetlands	Central Florida Pine Flatwoods
Wetlands	Central Interior Highlands and Appalachian Sinkhole and Depression Pond
Wetlands	Cumberland Riverscour
Wetlands	East Gulf Coastal Plain Interior Shrub Bog
Wetlands	East Gulf Coastal Plain Jackson Plain Dry Flatwoods - Open Understory Modifier
Wetlands	East Gulf Coastal Plain Jackson Plain Dry Flatwoods - Scrub/Shrub Understory Modifier
Wetlands	East Gulf Coastal Plain Large River Floodplain Forest - Forest Modifier
Wetlands	East Gulf Coastal Plain Large River Floodplain Forest - Herbaceous Modifier
Wetlands	East Gulf Coastal Plain Near-Coast Pine Flatwoods - Offsite Hardwood Modifier
Wetlands	East Gulf Coastal Plain Near-Coast Pine Flatwoods - Open Understory Modifier
Wetlands	East Gulf Coastal Plain Near-Coast Pine Flatwoods - Scrub/Shrub Understory Modifier
Wetlands	East Gulf Coastal Plain Northern Depression Pondshore
Wetlands	East Gulf Coastal Plain Northern Seepage Swamp
Wetlands	East Gulf Coastal Plain Southern Depression Pondshore
Wetlands	East Gulf Coastal Plain Southern Loblolly-Hardwood Flatwoods
Wetlands	East Gulf Coastal Plain Treeless Savanna and Wet Prairie
Wetlands	Floridian Highlands Freshwater Marsh
Wetlands	Lower Mississippi River Bottomland and Floodplain Forest
Wetlands	Lower Mississippi River Bottomland Depressions - Forest Modifier
Wetlands	Lower Mississippi River Bottomland Depressions - Herbaceous Modifier
Wetlands	Mississippi River Low Floodplain (Bottomland) Forest
Wetlands	Mississippi River Riparian Forest
Wetlands	North-Central Appalachian Acidic Swamp
Wetlands	North-Central Appalachian Seepage Fen
Wetlands	North-Central Interior and Appalachian Rich Swamp
Wetlands	South Florida Bayhead Swamp
Wetlands	South Florida Cypress Dome
Wetlands	South Florida Dwarf Cypress Savanna
Wetlands	South Florida Freshwater Slough and Gator Hole
Wetlands	South Florida Hardwood Hammock
Wetlands	South Florida Pine Flatwoods
Wetlands	South Florida Pond-Apple/Popash Slough
Wetlands	South Florida Wet Marl Prairie
Wetlands	South-Central Interior Large Floodplain - Forest Modifier
Wetlands	South-Central Interior Large Floodplain - Herbaceous Modifier
Wetlands	South-Central Interior/Upper Coastal Plain Wet Flatwoods
Wetlands	Southern and Central Appalachian Bog and Fen
Wetlands	Southern Appalachian Seepage Wetland
Wetlands	Southern Coastal Plain Blackwater River Floodplain Forest
Wetlands	Southern Coastal Plain Herbaceous Seepage Bog
Wetlands	Southern Coastal Plain Hydric Hammock
Wetlands	Southern Coastal Plain Nonriverine Basin Swamp
Wetlands	Southern Coastal Plain Nonriverine Cypress Dome
Wetlands	Southern Coastal Plain Seepage Swamp and Baygall
Wetlands	Southern Coastal Plain Spring-run Stream Aquatic Vegetation
Wetlands	Southern Piedmont Large Floodplain Forest - Forest Modifier
Wetlands	Southern Piedmont Large Floodplain Forest - Herbaceous Modifier
Wetlands	Southern Piedmont Seepage Wetland
Wetlands	Southern Piedmont/Ridge and Valley Upland Depression Swamp
Wetlands	Unconsolidated Shore (Lake/River/Pond)



- CITATIONS:** American Ornithologists' Union (AOU), Committee on Classification and Nomenclature. 1983. Check-list of North American Birds. Sixth Edition. American Ornithologists' Union, Allen Press, Inc., Lawrence, Kansas.
- Andrew, J.M. and J.A. Mosher. 1982. Bald eagle nest site selection and nesting habitat in Maryland. *J. Wildlife Management* 46:382-390.
- Anthony, R. G., and F. B. Isaacs. 1989. Characteristics of bald eagle nest sites in Oregon. *J. Wildlife Management*. 53:148-159.
- Bent, A.C. 1937. Life histories of North American birds of prey. Part 1. *Bull. U.S. Natl. Mus.* 137. 409 pp.
- Bird, D. M., editor. 1983. *Biology and management of bald eagles and ospreys*. MacDonald. 325 pp.
- Bowerman, W. W., et al. 1993. Population composition and perching habitat of wintering bald eagles, *HALIAEETUS LEUCOCEPHALUS*, in northcentral Michigan. *Can. Field-Nat.* 107:273-278.
- Brown, B. T. 1993. Winter foraging ecology of bald eagles in Arizona. *Condor* 95:132-138.
- Brown, B. T., and L. E. Stevens. 1992. Winter abundance, age structure, and distribution of bald eagles along the Colorado River, Arizona. *Southwestern Naturalist* 37:404-435.
- Brown, B. T., et al. 1989. Changes in winter distribution of bald eagles along the Colorado River in Grand Canyon, Arizona. *J. Raptor Research* 23:110-113.
- Brown, B. T., P. L. Warren, and L. S. Anderson. 1988. Status of bald eagles in the Rio Yaqui drainage of Sonora, Mexico. Page 321 in Glinski et al., eds. *Proc. Southwest raptor management symposium and workshop*. *Nat. Wildl. Fed. Sci. and Tech. Ser. No. 11*
- Brown, L. and D. Amadon. 1968. *Eagles, Hawks, and Falcons of the World*. McGraw-Hill, NY.
- Buehler, D. A. 2000. Bald Eagle (*Haliaeetus leucocephalus*). In *The Birds of North America*, No. 564 (A. Poole and F. Gill, eds.). The Birds of North America, Inc., Philadelphia, PA.
- Buehler, D. A., et al. 1991. Differences in distribution of breeding, nonbreeding, and migrant bald eagles on the northern Chesapeake Bay. *Condor* 93:399-408.
- Buehler, D. A., et al. 1991. Effects of human activity on bald eagle distribution on the northern Chesapeake Bay. *J. Wildlife Management* 55:282-290.
- Buehler, D. A., et al. 1991. Nonbreeding bald eagle communal and solitary roosting behavior and roost habitat on the northern Chesapeake Bay. *J. Wildlife Management* 55:273-281.
- Buehler, D. A., et al. 1991. Survival rates and population dynamics of bald eagles on Chesapeake Bay. *J. Wildlife Management* 55:608-613.
- Buehler, D. A., et al. 1991. Winter microclimate of bald eagle roosts on the northern Chesapeake Bay. *Auk* 108:612-618.
- Buehler, D. A., et al. 1992. Nonbreeding bald eagle perch habitat on the northern Chesapeake Bay. *Wilson Bull.* 104:540-545.
- Busch, D. E. 1988. Bald eagle. Pages 57-64 in Glinski et al., eds. *Proc. Southwest Raptor Manage. Symp. and Workshop*. National Wildlife Federation Sci. and Tech. Ser. No. 11.
- Byrd, M.A., and D.W. Johnston. 1991. *Birds*. Pages 477-537 in K. Terwilliger, coordinator. *Virginia's endangered species: proceedings of a symposium*. McDonald and Woodward Publ. Co., Blacksburg, Virginia.
- California Department of Fish and Game. 1990. 1989 annual report on the status of California's state listed threatened and endangered plants and animals. 188 pp.
- Campbell, R. W., N. K. Dawe, I. McTaggart-Cowan, J. M. Cooper, G. W. Kaiser and M. C. McNall. 1990. *The birds of British Columbia*, Vols. 1 and 2: Non passerines. Royal British Columbia Museum, Victoria, B. C. 518 and 636 pp.
- Caton, E. L., et al. 1992. Characteristics of foraging perches used by breeding bald eagles in Montana. *Wilson Bull.* 104:136-142.
- Chester, D. N., et al. 1990. Habitat use by nonbreeding bald eagles in North Carolina. *J. Wildlife Management* 54:223-234.
- Clark, W.S. 1987. *A field guide to the hawks of North America*. New York: Houghton Mifflin. 195 p.
- Collopy, M. W. 1987. *Distribution, Ownership Status, and Habitat Characteristics of Bald Eagles in Florida*. Gainesville, FL: Florida Game and Fresh Water Fish Commission.
- Curnutt, J. L. 1992. Dynamics of a year-round communal roost of bald eagles. *Wilson Bull.* 104:536-540.
- Dzus, E., and J. Gerrard. 1993. Factors influencing bald eagle densities in northcentral Saskatchewan. *J. Wildlife Management* 57:771-778.
- Ehrlich, P.R., D.S. Dobkin, and D. Wheye. 1992. *Birds in jeopardy: the imperiled and extinct birds of the United States and Canada, including Hawaii and Puerto Rico*. Stanford University Press, Stanford, California. 259 pp.

- Evans, D. L. 1982. Status reports on twelve raptors. U.S. Department of the Interior, Fish and Wildlife Service, Special Scientific Report No. 238. 68 pp.
- Evers, D. C. 1992. A guide to Michigan's endangered wildlife. Univ. Michigan Press, Ann Arbor. viii + 103 pp.
- Fisher, A.K. 1893. The hawks and owls of the United States in their relation to agriculture. Washington U.S. Dept. of Agriculture Bull. no. 6. 210 pp.
- Forbis, L. A. 1988. Status and trends of bald eagles breeding in Arizona, 1975-1986. Pages 282-288 in Glinski et al., eds. Proc. Southwest raptor management symposium and workshop. Nat. Wildl. Fed. Sci. and Tech. Ser. No. 11.
- Fraser, J. D., et al. 1983. Scheduling bald eagle reproductive surveys. Wildlife Society Bull. 11:13-16.
- Fraser, J. D., L. D. Frenzel, and J. E. Mathisen. 1985. The impact of human activities on breeding bald eagles in north-central Minnesota. J. Wildlife Management 49:585-592.
- Garrett, M. G.; J. W. Watson, and R. G. Anthony. 1993. Bald eagle home range and habitat use in the Columbia River estuary. Journal of Wildlife Management. 57:19-27.
- Gerrard, J. M., and G. R. Bortolotti. 1988. The bald eagle. Haunts and habits of a wilderness monarch. Smithsonian Institution Press, Washington, D.C. 194 pp.
- Green, N. 1985. The Bald Eagle. Pp 508-531 in R.L. DiSilvestro, ed., Audubon Wildlife Report 1985. National Audubon Society, New York.
- Griffin, C. R., T. S. Baskett, and R. D. Sparrowe. 1982. Ecology of bald eagles wintering near a waterfowl concentration. U.S. Fish and Wildlife Service Special Science Report - Wildlife No. 247:1-12.
- Grubb, T. G. 1980. An artificial bald eagle nest structure. USDA Forest Service, Rocky Mountain Forest and Range Experimental Station, Research Note RM-383.
- Grubb, T. G. 1995. Food habits of bald eagles breeding in the Arizona desert. Wilson Bulletin 107:258-274.
- Grubb, T. G., and R. M. King. 1991. Assessing human disturbance of breeding bald eagles with classification tree models. J. Wildlife Management 55:500-511.
- Grubb, T. G., et al. 1989. Winter roosting patterns of bald eagles (*HALIAEETUS LEUCOCEPHALUS*) in north-central Arizona. Southwestern Naturalist 34:453-459.
- Grubb, T. G., et al. 1992. Responses of breeding bald eagles, *HALIAEETUS LEUCOCEPHALIS* [sic], to human activities in northcentral Michigan. Canadian Field-Naturalist 106:443-453.
- Hamel, P. B. 1992. The land manager's guide to the birds of the south. The Nature Conservancy, Chapel Hill, North Carolina. 367 pp + several appendices.
- Harrison, C. 1978. A field guide to the nests, eggs and nestlings of North American birds. Collins, Cleveland, Ohio.
- Haywood, D. D., and R. D. Ohmart. 1986. Utilization of benthic-feeding fish by inland breeding bald eagles. Condor 88:35-42.
- Herkert, J. R., editor. 1992. Endangered and threatened species of Illinois:status and distribution. Vol. 2:Animals. Illinois Endangered Species Protection Board. iv + 142 pp.
- Hunter, P., and D. Baird. 1994/95. The bald eagle in Ontario's Great Lakes basin. Bird Trends (Canadian Wildlife Service) (4):17-18.
- Johnsgard, P.A. 1990. Hawks, eagles, and falcons of North America. Smithsonian Inst. Press, Washington, D.C. xvi + 403 pp.
- King, Warren B., compiler. 1979. Endangered birds of the world. The International Council for Bird Preservation. Smithsonian Institution Press, Washington, D.C. [Reprinted in handbook form in 1981.].
- Kirk, D.A., D. Hussell, and E. Dunn. 1994/95. Raptor population status and trends in Canada. Bird Trends (Canadian Wildlife Service) 4:2-9.
- Knight, R. L., and D. P. Anderson. 1990. Effects of supplemental feeding on an avian scavenging guild. Wildl. Soc. Bull. 18:388-394.
- Knight, R. L., and S. K. Knight. 1984. Responses of wintering bald eagles to boating activity. J. Wildlife Management 48:999-1004.
- Kozie, K. D., and R. K. Anderson. 1991. Productivity, diet, and environmental contaminants in bald eagles nesting near the Wisconsin shoreline of Lake Superior. Arch. Environ. Contam. Toxicol. 20:41-48.
- Kralovec, M. L., et al. 1992. Nesting productivity, food habits, and nest sites of bald eagles in Colorado and southeastern Wyoming. Southwestern Naturalist 37:356-361.
- Layne, J. N., F. E. Lohrer, C. E. Winegarner. 1977. Bird and mammal predators on the Cattle Egret in Florida. Fla. Field Nat. 5: 1-4.
- Lefranc, M. N., Jr., and R. L. Glinski. 1988. Southwest raptor management issues and recommendations. Pages 375-392 in Glinski et al., eds. Proc. Southwest raptor management symposium and workshop. National Wildlife Federation Science and Tech. Ser. No. 1
- Lincer, J. L., W. S. Clark, and M. N. Lefranc, Jr. 1979. Working bibliography of the bald eagle. Raptor Information Center, National Wildlife Federation, Washington, D.C. NWF Scientific/Technical Series No. 2. 219 pp.

- Livingston, S. A., et al. 1990. Habitat models for nesting bald eagles in Maine. *J. Wildlife Management* 54:644-653.
- Mahaffy, M. S., and L. D. Frenzel. 1987. Elicited territorial responses of northern bald eagles near active nests. *J. Wildlife Management* 51:551-554.
- Maniscalco, J., compiler. 1992. HALIAEETUS LEUCOCEPHALUS (Linnaeus) bald eagle:a working bibliography. Available as a printed document or on diskette.
- Matthews, J. R., and C. J. Moseley (editors). 1990. *The Official World Wildlife Fund Guide to Endangered Species of North America*. Volume 1. Plants, Mammals. xxiii + pp 1-560 + 33 pp. appendix + 6 pp. glossary + 16 pp. index. Volume 2. Birds, Reptiles, Am
- Millsap, B. A. 1986. Status of wintering bald eagles in the coterminous 48 states. *Wildlife Society Bull.* 14:433-440.
- Montopoli, G. J., and D. A. Anderson. 1991. A logistic model for the cumulative effects of human intervention on bald eagle habitat. *J. Wildlife Management* 55:290-293.
- National Geographic Society (NGS). 1983. *Field guide to the birds of North America*. National Geographic Society, Washington, D.C.
- Palmer, R. S., editor. 1988. *Handbook of North American birds*. Vol. 4. [Diurnal raptors, part 1]. Yale University Press, New Haven. vii + 433 pp.
- Pendleton, B. A. Giron, et al. 1987. *Raptor management techniques manual*. National Wildlife Federation, Sci. and Tech. Ser. No. 10. 420 pp.
- Root, T. 1988. *Atlas of wintering North American birds:An analysis of Christmas Bird Count data*. University of Chicago Press. 336 pp.
- Sibley, C.G., and B.L. Monroe. 1990. *Distribution and taxonomy of birds of the world*. Yale University Press, New Haven, Connecticut. xxiv + 1111 pp.
- Spencer, C. N., B. R. McClelland, and J. A. Stanford. 1991. Shrimp stocking, salmon collapse, and eagle displacement. *BioScience* 41:14-21.
- Stalmaster, M.V. 1987. *The bald eagle*. University Books, New York. 227 p.
- Steenhof, K. 1978. *Management of wintering bald eagles*. U.S. Fish and Wildlife Service, FWS/OBS-79/79, 55 pp.
- Stinson, D. K., J. W. Watson and K.R. McAllister. 2001. *Washington State Status Report for the Bald Eagle*. in. Washington Department of Fish and Wildlife, Wildlife Program.
- Terres, J.K. 1980. *The Audubon Society encyclopedia of North American birds*. Alfred A. Knopf, New York.
- Titus, K., and M. R. Fuller. 1990. Recent trends in counts of migrant hawks from northeastern North America. *Journal of Wildlife Management* 54:463-470.
- U.S. Fish and Wildlife Service (USFWS). 1990. *Endangered and threatened species recovery program:report to Congress*. 406 pp.
- Vermeer, K., and K. H. Morgan. 1989. Nesting population, nest sites, and prey remains of bald eagles in Barkeley Sound, British Columbia. *Northwestern Naturalist* 70:21-26.
- Watson, J. W., M. G. Garrett, and R. G. Anthony. 1991. Foraging ecology of bald eagles in the Columbia River estuary. *J. Wildlife Management* 55:492-499.
- Wiemeyer, S. N., et al. 1989. Environmental contaminants in blood of western bald eagles. *J. Raptor Res.* 23:140-146.
- Witmer, G., and T. A. O'Neil. 1990. Assessing cumulative impacts to wintering bald eagles in western Washington. Pages 144-150 in Mitchell et al., eds. *Ecosystem management:rare species and significant habitats*. New York State Museum Bull. 471.
- Wood, P. B., T. C. Edwards, Jr., and M. W. Collopy. 1989. Characteristics of bald eagle nesting habitat in Florida. *J. Wildlife Management* 53:441-449.
- Wood, P. B.. 1992. *Habitat use, movements, migration patterns, and survival of subadult Bald Eagles in north Florida*. Ph.D. diss., Univ. of Florida, Gainesville.
- Wood, Petra Bohall and Michael W. Collopy. 1991. *Population ecology of subadult southern bald eagles in Florida: post-fledging ecology, migration patterns, habitat use, and survival*. Florida: Florida Game and Fresh Water Fish Commission; GFC-87-026.