



SOUTHEAST GAP ANALYSIS PROJECT



Species Modeling Report

American Woodcock

Scolopax minor

Taxa: Avian

Order: Charadriiformes

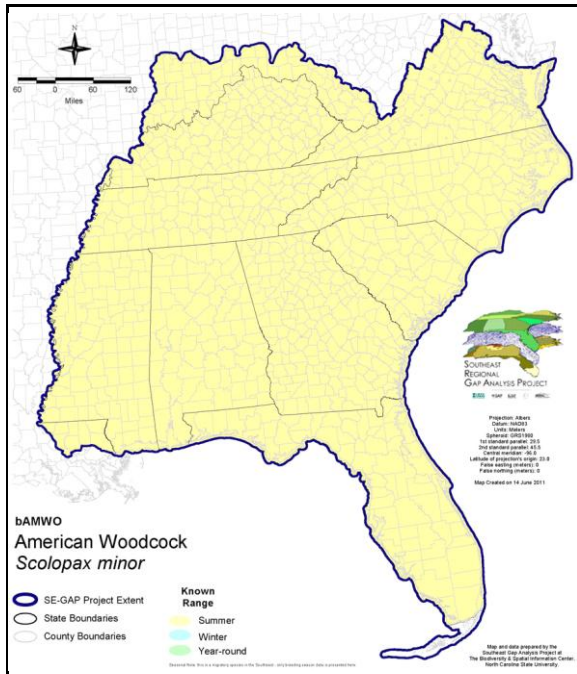
Family: Scolopacidae

SE-GAP Spp Code: **bAMWO**

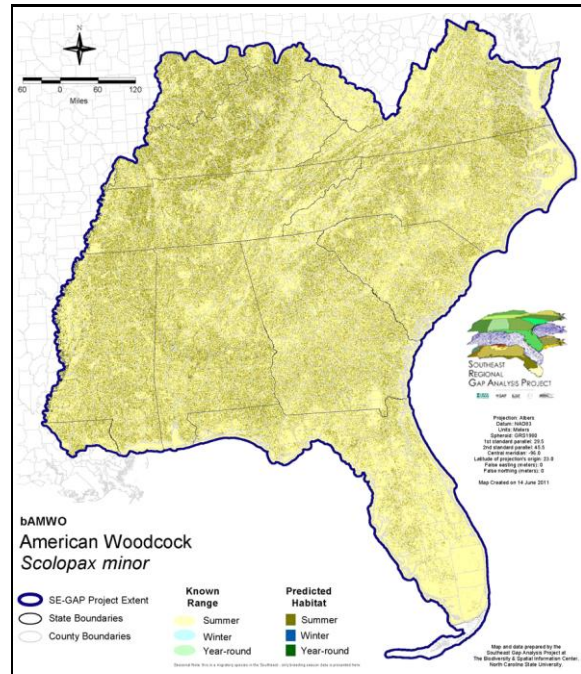
ITIS Species Code: 176580

NatureServe Element Code: ABNNF19020

KNOWN RANGE:



PREDICTED HABITAT:



Range Map Link: http://www.basic.ncsu.edu/segap/datazip/maps/SE_Range_bAMWO.pdf

Predicted Habitat Map Link: http://www.basic.ncsu.edu/segap/datazip/maps/SE_Dist_bAMWO.pdf

GAP Online Tool Link: <http://www.gapservice.ncsu.edu/segap/segap/index2.php?species=bAMWO>

Data Download: http://www.basic.ncsu.edu/segap/datazip/region/vert/bAMWO_se00.zip

PROTECTION STATUS:

Reported on March 14, 2011

Federal Status: ---

State Status: AL (GB), AR (W), KY (N), KY (N), NV (YES), NY (PB - GS), RI (Not Listed), UT (None), WI (SC/M), WI (SC/M), QC (Non suivie)

NS Global Rank: G5

NS State Rank: AL (S3B,S5N), AR (S2B,S4N), CO (SNA), CT (S5), DC (S3N), DE (S4), FL (SNRN), GA (S5), IA (S4B,S5N), IL (S4), IN (S4B), IN (S4B), KS (S2S3B), KY (S4S5B), KY (S4S5B), LA (S1B,S3S5N), MA (S4B,S4N), MD (S4B,S4N), ME (S5B,S5N), MI (S5), MN (SNRB), MO (SNRB), MS (SNR), MT (SNA), NC (S4B,S4N), ND (SU), NE (S3), NH (S4B), NH (S4B), NJ (S5), NM (SNA), NV (SNA), NY (S5), OH (S5), OK (S3), PA (S5B), RI (S4B,S4N), SC (S4), SD (S3B), SD (S3B), TN (S4B), TX (S2B,S3N), UT (SNA), VA (S5), VT (S5B), VT (S5B), WI (S4B), WI (S4B), WV (S4B,S3N), WY (SNA), MB (S4B), MB (S4B), NB (S5B,S5M), NB (S5B,S5M), NF (S1B), NS (S4S5B), ON (S4B), PE (S5B), QC (S5B), SK (SNA)

SUMMARY OF PREDICTED HABITAT BY MANAGMENT AND GAP PROTECTION STATUS:

	US FWS		US Forest Service		Tenn. Valley Author.		US DOD/ACOE	
	ha	%	ha	%	ha	%	ha	%
Status 1	30,362.5	< 1	2,494.8	< 1	0.0	0	0.0	0
Status 2	57,162.4	< 1	17,715.2	< 1	0.0	0	1,286.6	< 1
Status 3	1,170.0	< 1	190,426.2	< 1	25,698.7	< 1	135,639.8	< 1
Status 4	37.2	< 1	0.0	0	0.0	0	4.9	< 1
Total	88,732.1	< 1	210,636.2	< 1	25,698.7	< 1	136,931.3	< 1
	US Dept. of Energy		US Nat. Park Service		NOAA		Other Federal Lands	
	ha	%	ha	%	ha	%	ha	%
Status 1	0.0	0	14,890.9	< 1	14.0	< 1	807.7	< 1
Status 2	0.0	0	1,510.3	< 1	2,795.7	< 1	5.6	< 1
Status 3	8,597.4	< 1	34,402.0	< 1	0.0	0	1,241.6	< 1
Status 4	0.0	0	0.0	0	0.0	0	0.0	0
Total	8,597.4	< 1	50,803.1	< 1	2,809.7	< 1	2,054.9	< 1
	Native Am. Reserv.		State Park/Hist. Park		State WMA/Gameland		State Forest	
	ha	%	ha	%	ha	%	ha	%
Status 1	0.0	0	289.4	< 1	28.1	< 1	0.0	0
Status 2	0.0	0	1,366.6	< 1	147,806.1	< 1	62.8	< 1
Status 3	3,502.5	< 1	95,681.3	< 1	57,199.9	< 1	58,951.2	< 1
Status 4	0.0	0	0.0	0	23,297.6	< 1	9.5	< 1
Total	3,502.5	< 1	97,337.3	< 1	228,331.6	< 1	59,023.4	< 1
	State Coastal Reserve		ST Nat.Area/Preserve		Other State Lands		Private Cons. Easemt.	
	ha	%	ha	%	ha	%	ha	%
Status 1	0.0	0	1,675.5	< 1	0.0	0	0.0	0
Status 2	3,643.8	< 1	16,050.7	< 1	5.0	< 1	819.4	< 1
Status 3	0.0	0	4,182.3	< 1	8,489.7	< 1	38,332.3	< 1
Status 4	0.0	0	0.0	0	1,623.2	< 1	< 0.1	< 1
Total	3,643.8	< 1	21,908.5	< 1	10,117.8	< 1	39,151.7	< 1
	Private Land - No Res.		Water		Overall Total			
	ha	%	ha	%	ha	%	ha	%
Status 1	0.0	0	0.0	0	50,562.8 < 1			
Status 2	0.0	0	0.0	0	250,230.1 < 1			
Status 3	226.7	< 1	0.0	0	663,741.6 3			
Status 4	25,184,897.6	95	35,196.2	< 1	25,268,326.6 96			
Total	25,185,124.4	95	35,196.2	< 1	26,232,861.1 100			

GAP Status 1: An area having permanent protection from conversion of natural land cover and a mandated management plan in operation to maintain a natural state within which disturbance events (of natural type, frequency, and intensity) are allowed to proceed without interference or are mimicked through management.

GAP Status 2: An area having permanent protection from conversion of natural land cover and a mandated management plan in operation to maintain a primarily natural state, but which may receive use or management practices that degrade the quality of existing natural communities.

GAP Status 3: An area having permanent protection from conversion of natural land cover for the majority of the area, but subject to extractive uses of either a broad, low-intensity type or localized intense type. It also confers protection to federally listed endangered and threatened species throughout the area.

GAP Status 4: Lack of irrevocable easement or mandate to prevent conversion of natural habitat types to anthropogenic habitat types. Allows for intensive use throughout the tract. Also includes those tracts for which the existence of such restrictions or sufficient information to establish a higher status is unknown.

PREDICTED HABITAT MODEL(S):

Summer Model:

Habitat Description: Within breeding range, prefers openings within early successional forested habitats. Young forest and abandoned farmland mixed with forest are ideal. Forest openings and old fields provide display areas for males as grasses, herbaceous cover, and low shrubs are replaced by young trees. Nests and young broods inhabit young to mid-age forest interspersed with openings. M. Rubino, 29dec04.

Mask of Forest/Open Ecotone: Include within 125m of ecotone edge.

Selected Map Units:

Functional Group	Map Unit Name
Anthropogenic	Pasture/Hay
Anthropogenic	Row Crop
Anthropogenic	Successional Grassland/Herbaceous
Anthropogenic	Successional Grassland/Herbaceous (Other)
Anthropogenic	Successional Grassland/Herbaceous (Utility Swath)
Anthropogenic	Successional Shrub/Scrub (Clear Cut)
Anthropogenic	Successional Shrub/Scrub (Other)
Anthropogenic	Successional Shrub/Scrub (Utility Swath)
Forest/Woodland	Appalachian Hemlock-Hardwood Forest
Forest/Woodland	Atlantic Coastal Plain Mesic Hardwood and Mixed Forest
Forest/Woodland	East Gulf Coastal Plain Black Belt Calcareous Prairie and Woodland - Woodland Modifier
Forest/Woodland	East Gulf Coastal Plain Northern Mesic Hardwood Forest
Forest/Woodland	East Gulf Coastal Plain Southern Mesic Slope Forest
Forest/Woodland	South-Central Interior Mesophytic Forest
Forest/Woodland	Southern and Central Appalachian Cove Forest
Forest/Woodland	Southern Piedmont Mesic Forest
Prairie	Bluegrass Basin Savanna and Woodland
Prairie	East Gulf Coastal Plain Black Belt Calcareous Prairie and Woodland
Prairie	East Gulf Coastal Plain Black Belt Calcareous Prairie and Woodland - Herbaceous Modifier
Prairie	East Gulf Coastal Plain Jackson Plain Prairie and Barrens
Prairie	East Gulf Coastal Plain Jackson Prairie and Woodland
Prairie	Eastern Highland Rim Prairie and Barrens
Prairie	Eastern Highland Rim Prairie and Barrens - Dry Modifier
Prairie	Florida Dry Prairie
Prairie	Panhandle Florida Limestone Glade
Prairie	Pennyroyal Karst Plain Prairie and Barrens
Prairie	Southern Ridge and Valley Patch Prairie
Prairie	Western Highland Rim Prairie and Barrens
Wetlands	Atlantic Coastal Plain Blackwater Stream Floodplain Forest - Forest Modifier
Wetlands	Atlantic Coastal Plain Brownwater Stream Floodplain Forest
Wetlands	Atlantic Coastal Plain Nonriverine Swamp and Wet Hardwood Forest - Taxodium/Nyssa Modifier
Wetlands	Atlantic Coastal Plain Nonriverine Swamp and Wet Hardwood Forest - Oak Dominated Modifier
Wetlands	Atlantic Coastal Plain Northern Basin Peat Swamp
Wetlands	Atlantic Coastal Plain Small Blackwater River Floodplain Forest
Wetlands	Atlantic Coastal Plain Small Brownwater River Floodplain Forest
Wetlands	Central Appalachian Floodplain - Forest Modifier
Wetlands	Central Appalachian Riparian - Forest Modifier
Wetlands	East Gulf Coastal Plain Large River Floodplain Forest - Forest Modifier
Wetlands	East Gulf Coastal Plain Small Stream and River Floodplain Forest
Wetlands	Lower Mississippi River Bottomland and Floodplain Forest
Wetlands	Lower Mississippi River Bottomland Depressions - Forest Modifier
Wetlands	Mississippi River Low Floodplain (Bottomland) Forest
Wetlands	Mississippi River Riparian Forest
Wetlands	North-Central Appalachian Acidic Swamp
Wetlands	North-Central Interior and Appalachian Rich Swamp

Wetlands	South Florida Bayhead Swamp
Wetlands	South-Central Interior Large Floodplain - Forest Modifier
Wetlands	South-Central Interior Small Stream and Riparian
Wetlands	Southern Coastal Plain Blackwater River Floodplain Forest
Wetlands	Southern Piedmont Large Floodplain Forest - Forest Modifier
Wetlands	Southern Piedmont Small Floodplain and Riparian Forest

CITATIONS:

American Ornithologists' Union (AOU), Committee on Classification and Nomenclature. 1983. Check-list of North American Birds. Sixth Edition. American Ornithologists' Union, Allen Press, Inc., Lawrence, Kansas.

Banks, R. C., and M. R. Browning. 1995. Comments on the status of revived old names for some North American birds. *Auk* 112:633-648.

Bent, A.C. 1927. Life histories of North American shore birds. Part I. U.S. National Museum Bulletin No. 142, Washington, D.C.

Dwyer, T. J., and G. L. Storm, technical coordinators. 1982. Woodcock ecology and management. USFWS, Wildl Res. Rep. 14:1-191.

Dwyer, T. J., D. G. McAuley, and E. L. Derleth. 1983. Woodcock singing-ground counts and habitat changes in the northeastern United States. *J. Wildl. Manage.* 47:772-779.

Dwyer, T. J., R. A. Coon, and P. H. Geissler. 1979. The technical literature on the American woodcock 1927-1978. USFWS Spec. Sci. Rep.--Wildl. 213:1-44.

Ehrlich, P.R., D.S. Dobkin, and D. Wheye. 1988. *The birder's handbook: a field guide to the natural history of North American birds*. Simon and Shuster, Inc., New York. xxx + 785 pp.

Fussell, J.O. III. 1994. *A birder's guide to coastal North Carolina*. Chapel Hill and London: The University of North Carolina Press.

Harrison, C. 1978. *A field guide to the nests, eggs and nestlings of North American birds*. Collins, Cleveland, Ohio.

Harrison, H.H. 1979. *A field guide to western birds' nests*. Houghton Mifflin Company, Boston. 279 pp.

Krementz, D. G., and J. T. Seginak. 1993. Habitat use and survival rates of wintering American woodcocks in coastal South Carolina and Georgia. Page 133 in J. R. Longcore and G. F. Sepik, editors. *Proceedings of the eighth American woodcock symposium*. U.S.

Krementz, D. G., J. T. Seginak, and G. W. Pendleton. 1995. Habitat use at night by wintering American woodcocks in coastal Georgia and Virginia. *Wilson Bulletin* 107:686-697.

Krementz, D. G., J. T. Seginak, G. W. Pendleton. 1994. Winter movements and spring migration of American woodcock along the Atlantic coast. *Wilson Bull.* 106:482-493.

Longcore, J. R., and G. F. Sepik, editors. 1994. *Proceedings of the eighth American woodcock conference*. U.S. Fish and Wildlife Service Biological Report 16. 139 pp.

McAuley, D. G., J. R. Longcore, and G. F. Sepik. 1993. Techniques for research into woodcocks: experiences and recommendations. Pages 5-11 in J. R. Longcore and G. F. Sepik, editors. *Proceedings of the eighth American woodcock symposium*. U.S. Fish and Wild

Miner, J. G., and J. Bart. 1989. Woodcock abundance and hunter success: regional trends from hunter surveys. *Wildl. Soc. Bull.* 17:258-263.

Nicholson CP. 1997. *Atlas of the breeding birds of Tennessee*. Knoxville: University of Tennessee Press.

Pace, R. M., III, and G. W. Wood. 1993. Use of daytime microhabitat by wintering woodcocks in coastal South Carolina. Pages 66-74 in J. R. Longcore and G. F. Sepik, editors. *Proceedings of the eighth American woodcock symposium*. U.S. Fish and Wildlife Ser

Pettingill, O. S., Jr. 1936. The American woodcock PHILOHELA MINOR (Gmelin). *Mem. Boston Soc. Nat. Hist.* 9:169-391.

Potter, E. F., J. F. Parnell, and R. P. Teulings. 1980. *Birds of the Carolinas*. Univ. North Carolina Press, Chapel Hill. 408 pp.

Roberts, T. H. 1989. American woodcock (SCOLOPAX MINOR). Section 4.1.2, US Army Corps of Engineers Wildlife Resources Management Manual. Tech. Rep. EL-89-5. Waterways Expt. Station, Vicksburg, Mississippi. 56 pp.

Roberts, T. H. 1993. The ecology and management of wintering woodcocks. Pages 87-97 in J. R. Longcore and G. F. Sepik, editors. *Proceedings of the eighth American woodcock symposium*. U.S. Fish and Wildlife Service Biological Report 16. vi + 139 pp.

Sauer, J. R., and J. B. Bortner. 1991. Population trends from the American woodcock singing-ground survey, 1970-1988. *J. Wildl. Manage.* 55:300-312.

Sepik, G. F., and B. Blumenstock. 1993. Management and research on the American woodcock at the Moosehorn National wildlife Refuge. Page 136 in J. R. Longcore and G. F. Sepik, editors. *Proceedings of the eighth American woodcock symposium*. U.S. Fish and W

Sepik, G. F., and E. L. Derleth. 1993. Habitat use, home range size, and patterns of moves of the American woodcock in Maine. Pages 41-49 in J. R. Longcore and G. F. Sepik, editors. *Proceedings of the eighth American woodcock symposium*. U.S. Fish and Wild

Sepik, G. F., and E. L. Derleth. 1993. Premigratory dispersal and fall migration of American woodcocks in Maine. Pages 36-40 in J. R. Longcore and G. F. Sepik, editors. *Proceedings of the eighth American woodcock symposium*. U.S. Fish and Wildlife Service

- Sepik, G. F., R. B. Owen, Jr., and M. W. Coulter. 1981. A landowner's guide to woodcock management in the Northeast. University of Maine Agricultural Experiment Station Misc. Rep. 253. 23 pp.
- Sheldon, W. G. 1967. The book of the American woodcock. Univ. Massachusetts Press, Amherst. xvii + 227 pp.
- Simpson MB Jr. 1992. Birds of the Blue Ridge Mountains. Chapel Hill and London: University of North Carolina Press.
- Tappe, P. A., and R. M. Whiting, Jr. 1993. Discrimination between constant-zero and non-zero survey routes on singing grounds of the American woodcock in eastern Texas. Pages 32-35 in J. R. Longcore and G. F. Sepik, editors. Proceedings of the eighth Amer
- Terres, J.K. 1980. The Audubon Society encyclopedia of North American birds. Alfred A. Knopf, New York.
- U.S. Fish & Wildl. Serv. 1988. SEIS 88. Final supplemental environmental impact statement:issuance of annual regulations permitting the sport hunting of migratory birds. x + 340 pp.
- U.S. Fish and Wildlife Service. 1990. American woodcock management plan. USFWS, Office of Migratory Bird Management. 11 pp.
- Vander Haegen, W. M., W. B. Krohn, and R. B. Owen, Jr. 1993. Effects of weather on earthworm abundance and foods of the American woodcock in spring. Pages 26-31 in J. R. Longcore and G. F. Sepik, editors. Proceedings of the eighth American woodcock sympos
- Wakeley, J. S., T. H. Roberts, and C. O. Martin. 1990. Auditory survey methods. Section 6.3.5, US Army Corps of Engineers Wildlife Resources Management Manual. Tech. Rep. EL-90-7. Waterways Expt. Station, Vicksburg, Mississippi. 34 pp.
- Williamson, S. J. No date. Forester's guide to wildlife habitat improvement. Cooperative Extension Service, Univ. of New Hampshire. 56 pp.

For more information:: SE-GAP Analysis Project / BaSIC
127 David Clark Labs
Dept. of Biology, NCSU
Raleigh, NC 27695-7617
(919) 513-2853
www.basic.ncsu.edu/segap

Compiled: 15 September 2011

This data was compiled and/or developed
by the Southeast GAP Analysis Project at
The Biodiversity and Spatial Information
Center, North Carolina State University.