



SOUTHEAST GAP ANALYSIS PROJECT



Species Modeling Report

American Black Duck

Anas rubripes

Taxa: Avian

Order: Anseriformes

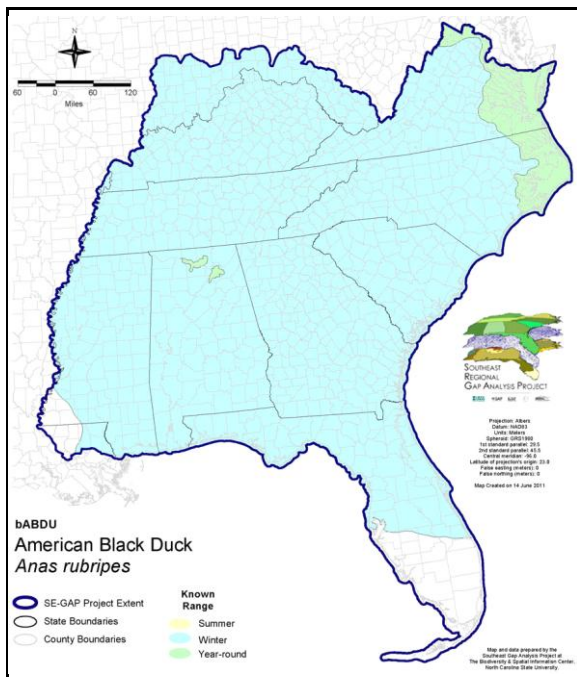
Family: Anatidae

SE-GAP Spp Code: **bABDU**

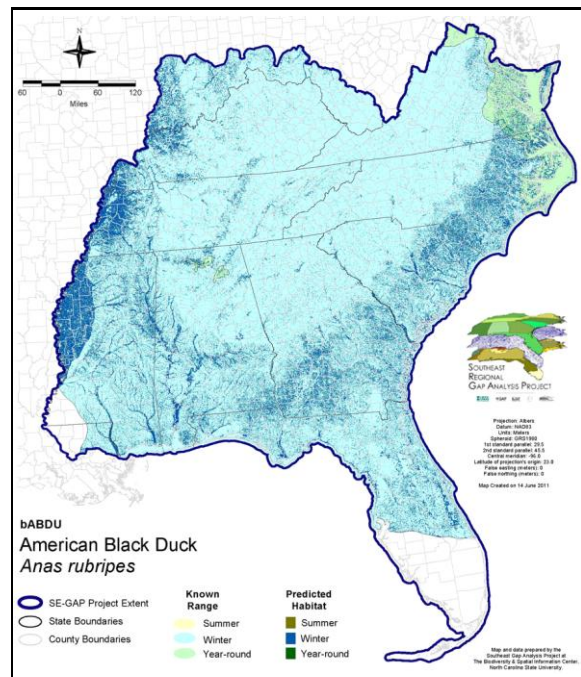
ITIS Species Code: 175068

NatureServe Element Code: ABNJB10040

KNOWN RANGE:



PREDICTED HABITAT:



Range Map Link: http://www.basic.ncsu.edu/segap/datazip/maps/SE_Range_bABDU.pdf

Predicted Habitat Map Link: http://www.basic.ncsu.edu/segap/datazip/maps/SE_Dist_bABDU.pdf

GAP Online Tool Link: <http://www.gapservice.ncsu.edu/segap/segap/index2.php?species=bABDU>

Data Download: http://www.basic.ncsu.edu/segap/datazip/region/vert/bABDU_se00.zip

PROTECTION STATUS:

Reported on March 14, 2011

Federal Status: ---

State Status: AL (GB), ID (G), KY (N), NJ (S), NV (YES), NY (PB - GS), RI (Not Listed), UT (None), WI (SC/M), BC (7 (2005)), QC (Non suivie)

NS Global Rank: G5

NS State Rank: AK (SNA), AL (S2B,S5N), AR (S3N), CA (SNA), CO (SNA), CT (S3B,S4N), DC (S3S4N), DE (S4B,S4N), FL (SNRN), GA (S3S4), IA (SNA), IA (SNA), ID (SNA), IL (SNA), IN (S1), KS (SNA), KY (S4N), LA (S3S4N), MA (S4B,S5N), MD (S4B,S5N), ME (S5B,S5N), MI (S3), MN (SNRB,SNRN), MO (SNRN), MO (SNRN), MS (S2N), MT (SNA), NC (S3B,S4N), ND (SU), NE (SNRN), NH (S4), NJ (S4), NM (SNA), NV (SNA), NY (S4), OH (S2), OK (S2N), OR (SNA), PA (S4B,S4N), RI (S4B,S4N), SC (SNRN), SD (SNA), TN (S3S4N), TX (SH), UT (SNA), VA (S4), VT (S5B,S5N), WA (SNA), WI (S2B), WV (S2B,S4N), WY (SNA), AB (SNA), AB (SNA), BC (SNA), LB (S5B), MB (S3B), MB (S3B), NB (S5B,S4N), NF (S5B,S5N), NS (S5B), NU (SNRB), ON (S4), ON (S4), PE (S5B,S5M,S4N), QC (S5B), SK (S4B,S4M)

SUMMARY OF PREDICTED HABITAT BY MANAGMENT AND GAP PROTECTION STATUS:

	US FWS		US Forest Service		Tenn. Valley Author.		US DOD/ACOE	
	ha	%	ha	%	ha	%	ha	%
Status 1	84,406.8	< 1	2,402.9	< 1	0.0	0	0.0	0
Status 2	151,299.5	< 1	19,691.7	< 1	0.0	0	1,829.4	< 1
Status 3	1,786.7	< 1	199,318.3	1	9,342.2	< 1	135,899.0	< 1
Status 4	25.5	< 1	0.0	0	0.0	0	20.9	< 1
Total	237,518.4	1	221,413.0	1	9,342.2	< 1	137,749.3	< 1
	US Dept. of Energy		US Nat. Park Service		NOAA		Other Federal Lands	
	ha	%	ha	%	ha	%	ha	%
Status 1	0.0	0	13,002.2	< 1	1,141.0	< 1	6,731.6	< 1
Status 2	0.0	0	32,389.9	< 1	30,545.2	< 1	26.1	< 1
Status 3	17,163.5	< 1	8,993.3	< 1	0.0	0	1,408.1	< 1
Status 4	0.0	0	3.0	0	0.0	0	0.0	0
Total	17,163.5	< 1	54,388.6	< 1	31,686.2	< 1	8,165.9	< 1
	Native Am. Reserv.		State Park/Hist. Park		State WMA/Gameland		State Forest	
	ha	%	ha	%	ha	%	ha	%
Status 1	0.0	0	169.4	< 1	5.5	< 1	0.0	0
Status 2	0.0	0	1,128.9	< 1	303,671.3	2	24.3	< 1
Status 3	2,217.4	< 1	264,266.6	1	89,154.1	< 1	73,590.1	< 1
Status 4	0.0	0	0.0	0	10,538.0	< 1	5.5	< 1
Total	2,217.4	< 1	265,564.8	1	403,368.8	2	73,619.9	< 1
	State Coastal Reserve		ST Nat.Area/Preserve		Other State Lands		Private Cons. Easemt.	
	ha	%	ha	%	ha	%	ha	%
Status 1	0.0	0	2,366.2	< 1	0.0	0	0.0	0
Status 2	30,822.8	< 1	53,228.3	< 1	2.7	< 1	641.2	< 1
Status 3	0.0	0	8,858.1	< 1	5,765.9	< 1	38,694.5	< 1
Status 4	0.0	0	0.0	0	1,643.0	< 1	0.0	0
Total	30,822.8	< 1	64,452.5	< 1	7,411.5	< 1	39,335.7	< 1
	Private Land - No Res.		Water		Overall Total			
	ha	%	ha	%	ha	%		
Status 1	0.0	9	0.0	0	110,225.8	< 1		
Status 2	0.8	< 1	0.0	9	625,302.1	3		
Status 3	518.3	< 1	< 0.1	< 1	856,976.2	6		
Status 4	16,652,532.4	90	53,485.5	< 1	16,728,766.4	90		
Total	16,653,051.7	90	53,485.7	< 1	18,321,270.5	100		

GAP Status 1: An area having permanent protection from conversion of natural land cover and a mandated management plan in operation to maintain a natural state within which disturbance events (of natural type, frequency, and intensity) are allowed to proceed without interference or are mimicked through management.

GAP Status 2: An area having permanent protection from conversion of natural land cover and a mandated management plan in operation to maintain a primarily natural state, but which may receive use or management practices that degrade the quality of existing natural communities.

GAP Status 3: An area having permanent protection from conversion of natural land cover for the majority of the area, but subject to extractive uses of either a broad, low-intensity type or localized intense type. It also confers protection to federally listed endangered and threatened species throughout the area.

GAP Status 4: Lack of irrevocable easement or mandate to prevent conversion of natural habitat types to anthropogenic habitat types. Allows for intensive use throughout the tract. Also includes those tracts for which the existence of such restrictions or sufficient information to establish a higher status is unknown.

PREDICTED HABITAT MODEL(S):

Summer Model:

Habitat Description: Within Alabama, American black ducks are considered a local and resident breeder within two managed refuges, Wheeler National Wildlife Refuge & Gunterville Reservoir (Gary Hepp, personal communications). Within this breeding extent, black ducks will utilize most types of freshwater impoundments, woodland wetlands, and shallow lakes with emergent vegetation (Longcore et al. 2000). Amy Silvano 01Sept05

Ecosystem classifiers: Open water, Floodplain/Riparian, Scrub/Shrub. Amy Silvano 01Sept05

Hydrography Mask:

Freshwater Only

Utilizes flowing water features with buffer of 120m from selected water features.

Utilizes open water features with buffers of 120m from and 60m into selected water features.

Selected Map Units:

Functional Group	Map Unit Name
Brackish Tidal Marsh & Wetland	Atlantic Coastal Plain Embayed Region Tidal Salt and Brackish Marsh
Brackish Tidal Marsh & Wetland	Atlantic Coastal Plain Northern Tidal Wooded Swamp
Freshwater Tidal Marsh & Wetland	Atlantic Coastal Plain Central Fresh-Oligohaline Tidal Marsh
Freshwater Tidal Marsh & Wetland	Atlantic Coastal Plain Embayed Region Tidal Freshwater Marsh
Freshwater Tidal Marsh & Wetland	Atlantic Coastal Plain Northern Fresh and Oligohaline Tidal Marsh
Water	Open Water (Fresh)
Wetlands	Atlantic Coastal Plain Blackwater Stream Floodplain Forest - Forest Modifier
Wetlands	Atlantic Coastal Plain Blackwater Stream Floodplain Forest - Herbaceous Modifier
Wetlands	Atlantic Coastal Plain Brownwater Stream Floodplain Forest
Wetlands	Atlantic Coastal Plain Large Natural Lakeshore
Wetlands	Atlantic Coastal Plain Northern Basin Swamp and Wet Hardwood Forest
Wetlands	Atlantic Coastal Plain Northern Pondshore
Wetlands	Atlantic Coastal Plain Small Blackwater River Floodplain Forest
Wetlands	Atlantic Coastal Plain Small Brownwater River Floodplain Forest
Wetlands	South-Central Interior Large Floodplain - Forest Modifier
Wetlands	South-Central Interior Large Floodplain - Herbaceous Modifier
Wetlands	South-Central Interior Small Stream and Riparian

Winter Model:

Habitat Description: American black ducks are a fairly common winter residents within the Southeast. This species winters mostly in salt water environments and along coastal marshes although, they can also be found inland in some freshwater habitats (Longcore et al. 2000, Turcotte & Watts 1999). Generally, black ducks can be seen on lakes, beaver ponds, managed wetlands, flooded bottomlands, riverine habitats and agricultural fields (Longcore et al. 2000, Turcotte & Watts 1999). Amy Silvano 01sept05

Ecosystem Classifiers: Open Water, Coastal, Brackish, & Freshwater Wetlands, Depressional, lakes/rivers/pondshores, Floodplain/Riparian as PMU and Ag fields as AMU. Amy Silvano 01Sept05

Hydrography Mask:

Utilizes flowing water features with buffers of 1000m from and 500m into selected water features.

Utilizes open water features with buffers of 1000m from and 500m into selected water features.

Selected Map Units:

Functional Group	Map Unit Name
Brackish Tidal Marsh & Wetland	Atlantic Coastal Plain Central Salt and Brackish Tidal Marsh
Brackish Tidal Marsh & Wetland	Atlantic Coastal Plain Embayed Region Tidal Salt and Brackish Marsh
Brackish Tidal Marsh & Wetland	Atlantic Coastal Plain Indian River Lagoon Tidal Marsh
Brackish Tidal Marsh & Wetland	Atlantic Coastal Plain Northern Sea-Level Fen
Brackish Tidal Marsh & Wetland	Atlantic Coastal Plain Northern Tidal Salt Marsh

Brackish Tidal Marsh & Wetland	Atlantic Coastal Plain Northern Tidal Wooded Swamp
Brackish Tidal Marsh & Wetland	Atlantic Coastal Plain Southern Tidal Wooded Swamp
Brackish Tidal Marsh & Wetland	East Gulf Coastal Plain Tidal Wooded Swamp
Brackish Tidal Marsh & Wetland	Florida Big Bend Salt-Brackish Tidal Marsh
Brackish Tidal Marsh & Wetland	Mississippi Sound Salt and Brackish Tidal Marsh
Brackish Tidal Marsh & Wetland	South Florida Everglades Sawgrass Marsh
Brackish Tidal Marsh & Wetland	South Florida Mangrove Swamp
Brackish Tidal Marsh & Wetland	Southwest Florida Perched Barriers Salt Swamp and Lagoon - Mangrove Modifier
Brackish Tidal Marsh & Wetland	Southwest Florida Perched Barriers Salt Swamp and Lagoon - Marsh Modifier
Coastal Dune & Freshwater Wetland	Atlantic and Gulf Coastal Plain Interdunal Wetland
Coastal Dune & Freshwater Wetland	Atlantic Coastal Plain Northern Dune and Maritime Grassland
Coastal Dune & Freshwater Wetland	Atlantic Coastal Plain Southern Dune and Maritime Grassland
Coastal Dune & Freshwater Wetland	East Gulf Coastal Plain Dune and Coastal Grassland
Coastal Dune & Freshwater Wetland	Southwest Florida Dune and Coastal Grassland
Freshwater Tidal Marsh & Wetland	Atlantic Coastal Plain Central Fresh-Oligohaline Tidal Marsh
Freshwater Tidal Marsh & Wetland	Atlantic Coastal Plain Embayed Region Tidal Freshwater Marsh
Freshwater Tidal Marsh & Wetland	Atlantic Coastal Plain Northern Fresh and Oligohaline Tidal Marsh
Freshwater Tidal Marsh & Wetland	Florida Big Bend Fresh-Oligohaline Tidal Marsh
Water	Open Water (Brackish/Salt)
Water	Open Water (Fresh)
Wetlands	Atlantic Coastal Plain Blackwater Stream Floodplain Forest - Forest Modifier
Wetlands	Atlantic Coastal Plain Blackwater Stream Floodplain Forest - Herbaceous Modifier
Wetlands	Atlantic Coastal Plain Brownwater Stream Floodplain Forest
Wetlands	Atlantic Coastal Plain Clay-Based Carolina Bay Forested Wetland
Wetlands	Atlantic Coastal Plain Clay-Based Carolina Bay Herbaceous Wetland
Wetlands	Atlantic Coastal Plain Depression Pondshore
Wetlands	Atlantic Coastal Plain Large Natural Lakeshore
Wetlands	Atlantic Coastal Plain Northern Basin Swamp and Wet Hardwood Forest
Wetlands	Atlantic Coastal Plain Northern Pondshore
Wetlands	Atlantic Coastal Plain Peatland Pocosin
Wetlands	Atlantic Coastal Plain Sandhill Seep
Wetlands	Atlantic Coastal Plain Small Blackwater River Floodplain Forest
Wetlands	Atlantic Coastal Plain Small Brownwater River Floodplain Forest
Wetlands	Atlantic Coastal Plain Streamhead Seepage Swamp, Pocosin, and Baygall
Wetlands	Atlantic Coastal Plain Xeric River Dune
Wetlands	Central Appalachian Floodplain - Forest Modifier
Wetlands	Central Appalachian Floodplain - Herbaceous Modifier
Wetlands	Central Appalachian Riparian - Forest Modifier
Wetlands	Central Appalachian Riparian - Herbaceous Modifier
Wetlands	Central Florida Herbaceous Pondshore
Wetlands	Central Florida Herbaceous Seep
Wetlands	Cumberland Riverscour
Wetlands	East Gulf Coastal Plain Large River Floodplain Forest - Forest Modifier
Wetlands	East Gulf Coastal Plain Large River Floodplain Forest - Herbaceous Modifier
Wetlands	East Gulf Coastal Plain Northern Depression Pondshore
Wetlands	East Gulf Coastal Plain Northern Seepage Swamp
Wetlands	East Gulf Coastal Plain Small Stream and River Floodplain Forest
Wetlands	East Gulf Coastal Plain Southern Depression Pondshore
Wetlands	Floridian Highlands Freshwater Marsh
Wetlands	Lower Mississippi River Bottomland and Floodplain Forest
Wetlands	Lower Mississippi River Bottomland Depressions - Forest Modifier
Wetlands	Lower Mississippi River Bottomland Depressions - Herbaceous Modifier
Wetlands	Mississippi River Low Floodplain (Bottomland) Forest
Wetlands	Mississippi River Riparian Forest
Wetlands	South Florida Freshwater Slough and Gator Hole
Wetlands	South Florida Pond-Apple/Popash Slough

Wetlands	South Florida Willow Head
Wetlands	South-Central Interior Large Floodplain - Forest Modifier
Wetlands	South-Central Interior Large Floodplain - Herbaceous Modifier
Wetlands	South-Central Interior Small Stream and Riparian
Wetlands	Southern Appalachian Seepage Wetland
Wetlands	Southern Coastal Plain Blackwater River Floodplain Forest
Wetlands	Southern Coastal Plain Herbaceous Seepage Bog
Wetlands	Southern Coastal Plain Nonriverine Basin Swamp
Wetlands	Southern Coastal Plain Seepage Swamp and Baygall
Wetlands	Southern Coastal Plain Spring-run Stream Aquatic Vegetation
Wetlands	Southern Piedmont Large Floodplain Forest - Forest Modifier
Wetlands	Southern Piedmont Large Floodplain Forest - Herbaceous Modifier
Wetlands	Southern Piedmont Seepage Wetland
Wetlands	Southern Piedmont Small Floodplain and Riparian Forest
Wetlands	Southern Piedmont/Ridge and Valley Upland Depression Swamp
Wetlands	Western Highland Rim Seepage Fen

Selected Secondary Map Units within 1000m of Primary Map Units:

Functional Group	Map Unit Name
Anthropogenic	Row Crop

CITATIONS:

Alsop FJ III. 1991. Birds of the Smokies. Gatlinburg: Great Smoky Mountains Natural History Association.

American Ornithologists' Union (AOU), Committee on Classification and Nomenclature. 1983. Check-list of North American Birds. Sixth Edition. American Ornithologists' Union, Allen Press, Inc., Lawrence, Kansas.

Ankney, C. D., D. G. Dennis, and R. C. Bailey. 1987. Increasing mallards, decreasing American black ducks: coincidence or cause and effect? *J. Wildl. Manage.* 51:.

Ankney, C. D., D. G. Dennis, and R. C. Bailey. 1989. Increasing mallards, decreasing American black ducks--no evidence for cause and effect: a reply. *J. Wildl. Manage.* 53:1072-1075.

Ankney, C. D., et al. 1986. Low genetic variation between black ducks and mallards. *Auk* 103:701-709.

Avise, J. C., C. D. Ankney, and W. S. Nelson. 1991. Mitochondrial gene trees and the evolutionary relationship of mallard and black ducks. *Evolution* 44:1109-1119.

Blandin, W. W. 1992. Population characteristics and simulation modeling of black ducks. U.S. Fish and Wildl. Serv. Research Rep. 11.

Conroy, M. J., et al. 1989. Increasing mallards, decreasing American black ducks--no evidence for cause and effect: a comment. *J. Wildl. Manage.* 53:1065-1071.

Diefenbach, D. R., J. D. Nichols, and J. E. Hines. 1988. Distribution patterns during winter and fidelity to wintering areas of American black ducks. *Can. J. Zool.* 66:1506-1513.

Ehrlich, P.R., D.S. Dobkin, and D. Wheye. 1988. *The birder's handbook: a field guide to the natural history of North American birds.* Simon and Shuster, Inc., New York. xxx + 785 pp.

Ehrlich, P.R., D.S. Dobkin, and D. Wheye. 1992. *Birds in jeopardy: the imperiled and extinct birds of the United States and Canada, including Hawaii and Puerto Rico.* Stanford University Press, Stanford, California. 259 pp.

Frazer, C., J. R. Longcore, and D. G. McAuley. 1990. Habitat use by postfledging American black ducks in Maine and New Brunswick. *J. Wildl. Manage.* 54:451-459.

Frazer, C., J. R. Longcore, and D. G. McAuley. 1990. Home range and movements of postfledging American black ducks in eastern Maine. *Can. J. Zool.* 68:1288-1291.

Fussell, J. III and M. Lyons. 1990. *Birds of the Outer Banks [pamphlet].* Eastern National Parks and Monument Association Coastal Wildlife Refuge Society.

Fussell, J.O. III. 1994. *A birder's guide to coastal North Carolina.* Chapel Hill and London: The University of North Carolina Press.

Geis, A. D., R. I. Smith, and J. P. Rogers. 1971. Black duck distribution, harvest characteristics, and survival. U.S. Fish and Wildl. Serv. Spec. Sci. Rep. Wildlife No. 139. 240 pp.

Grandy, J.W. 1983. The North American black duck (ANAS RUBRIPES): a case study of 28 years of failure in American wildlife management. Supplement to *Int. J. Study Anim. Prob.* 4(4):1-35.

Harrison, H.H. 1975. *A field guide to bird's nests in the U.S. east of the Mississippi River.* Houghton Mifflin Company, Boston, Massachusetts. 257 p.

Kaufman K. 1996. *Lives of North American Birds.* Boston, New York: Houghton Mifflin Company.

- Krementz, D. G., et al. 1988. The effects of hunting on survival rates of American black ducks. *J. Wildl. Manage.* 52:214-226.
- Krementz, D. G., et al. 1991. Historical changes in laying date, clutch size, and nest success of American black ducks. *J. Wildl. Manage.* 55:462-466.
- Livezey, B. C. 1991. A phylogenetic analysis and classification of recent dabbling ducks (tribe Anatini) based on comparative morphology. *Auk* 108:471-507.
- Longcore, J.R., D.G. McAuley, G.R. Hepp, and J.M. Rhymer. 2000. American Black Duck (*Anas rubripes*). In *The Birds of North America*, No. 481 (A. Poole and F. Gill, eds.) The Birds of North America, Inc., Philadelphia, PA.
- Merendino, M. T., and C. D. Ankney. 1994. Habitat use by mallards and American black ducks breeding in central Ontario. *Condor* 96:411-421.
- Nichols, J. D. 1991. Science, population ecology, and the management of the American black duck. *J. Wildl. Manage.* 55:790-799.
- Nicholson CP. 1997. *Atlas of the breeding birds of Tennessee*. Knoxville: University of Tennessee Press.
- Palmer, R. S., editor. 1976. *Handbook of North American birds*. Vol. 2. Waterfowl (first part). Whistling ducks, swans, geese, sheld-ducks, dabbling ducks. Yale Univ. Press, New Haven. 521 pp.
- Pearson, T.G. 1959. *Birds of North Carolina*. Raleigh, NC: Bynum Printing Company.
- Potter, E. F., J. F. Parnell, and R. P. Teulings. 1980. *Birds of the Carolinas*. Univ. North Carolina Press, Chapel Hill. 408 pp.
- Root, T. 1988. *Atlas of wintering North American birds: An analysis of Christmas Bird Count data*. University of Chicago Press. 336 pp.
- Rusch, D. R., et al. 1990. Population ecology and harvest of the American black duck: a review. *Wildl. Soc. Bull.* 17:379-406.
- Simpson MB Jr. 1992. *Birds of the Blue Ridge Mountains*. Chapel Hill and London: University of North Carolina Press.
- Terres, J.K. 1980. *The Audubon Society encyclopedia of North American birds*. Alfred A. Knopf, New York.

For more information:: SE-GAP Analysis Project / BaSIC
127 David Clark Labs
Dept. of Biology, NCSU
Raleigh, NC 27695-7617
(919) 513-2853
www.basic.ncsu.edu/segap

Compiled: 15 September 2011

This data was compiled and/or developed by the Southeast GAP Analysis Project at The Biodiversity and Spatial Information Center, North Carolina State University.