



SOUTHEAST GAP ANALYSIS PROJECT



Species Modeling Report

Mississippi Gopher Frog

Rana sevosa

Taxa: Amphibian

Order: Anura

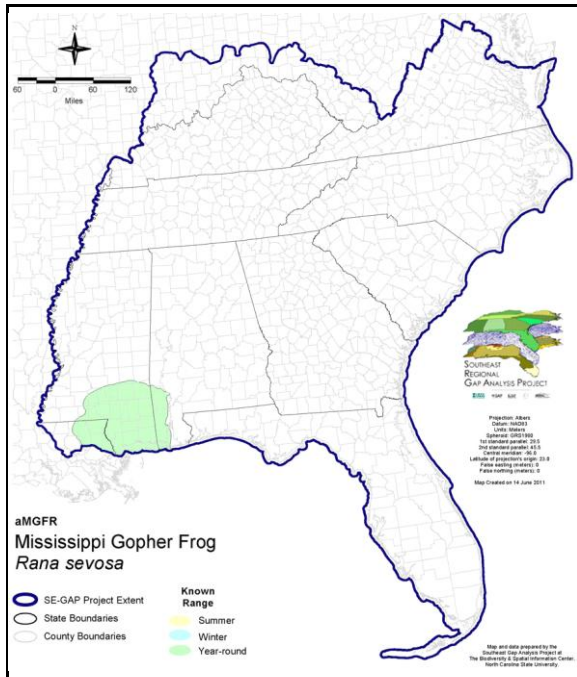
Family: Ranidae

SE-GAP Spp Code: **aMGFR**

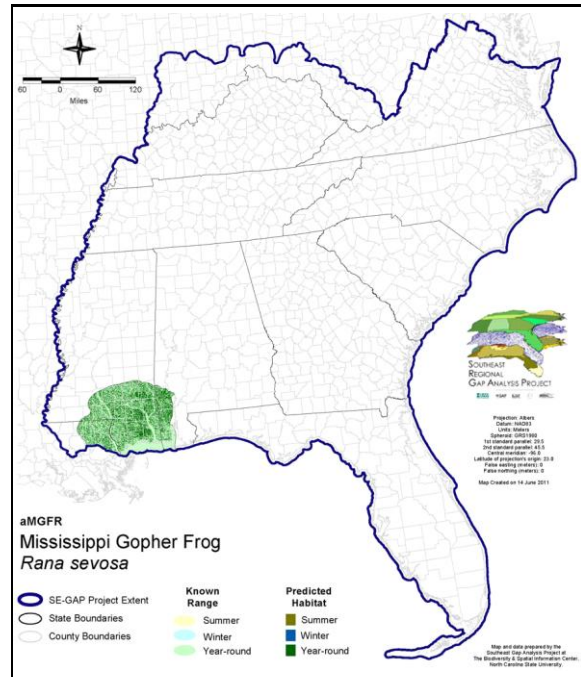
ITIS Species Code: 207019

NatureServe Element Code: AAABH01310

KNOWN RANGE:



PREDICTED HABITAT:



Range Map Link: http://www.basic.ncsu.edu/segap/datazip/maps/SE_Range_aMGFR.pdf

Predicted Habitat Map Link: http://www.basic.ncsu.edu/segap/datazip/maps/SE_Dist_aMGFR.pdf

GAP Online Tool Link: <http://www.gapservice.ncsu.edu/segap/segap/index2.php?species=aMGFR>

Data Download: http://www.basic.ncsu.edu/segap/datazip/region/vert/aMGFR_se00.zip

PROTECTION STATUS:

Reported on March 14, 2011

Federal Status: LE

State Status: AL (SP), MS (LE)

NS Global Rank: G1

NS State Rank: AL (SH), LA (SH), MS (S1)

SUMMARY OF PREDICTED HABITAT BY MANAGMENT AND GAP PROTECTION STATUS:

	US FWS		US Forest Service		Tenn. Valley Author.		US DOD/ACOE	
	ha	%	ha	%	ha	%	ha	%
Status 1	4,187.9	< 1	69.0	< 1	0.0	0	0.0	0
Status 2	54.2	< 1	4,941.7	< 1	0.0	0	0.0	0
Status 3	0.0	0	153,232.8	10	0.0	0	32.0	< 1
Status 4	0.0	0	0.0	0	0.0	0	0.0	0
Total	4,242.1	< 1	158,243.6	11	0.0	0	32.0	< 1
	US Dept. of Energy		US Nat. Park Service		NOAA		Other Federal Lands	
	ha	%	ha	%	ha	%	ha	%
Status 1	0.0	0	0.0	0	0.0	0	0.0	0
Status 2	0.0	0	10.8	< 1	0.0	0	0.0	0
Status 3	0.0	0	0.0	0	0.0	0	2,282.0	< 1
Status 4	0.0	0	0.0	0	0.0	0	0.0	0
Total	0.0	0	10.8	< 1	0.0	0	2,282.0	< 1
	Native Am. Reserv.		State Park/Hist. Park		State WMA/Gameland		State Forest	
	ha	%	ha	%	ha	%	ha	%
Status 1	0.0	0	0.0	0	0.0	0	0.0	0
Status 2	0.0	0	5.6	< 1	2,817.5	< 1	0.0	0
Status 3	93.2	< 1	157.1	< 1	7,581.6	< 1	0.0	0
Status 4	0.0	0	0.0	0	6,352.7	< 1	0.0	0
Total	93.2	< 1	162.7	< 1	16,751.8	1	0.0	0
	State Coastal Reserve		ST Nat.Area/Preserve		Other State Lands		Private Cons. Easemt.	
	ha	%	ha	%	ha	%	ha	%
Status 1	0.0	0	780.8	< 1	0.0	0	0.0	0
Status 2	1,312.2	< 1	213.2	< 1	0.0	0	27.6	< 1
Status 3	0.0	0	0.0	0	0.0	0	86.9	< 1
Status 4	0.0	0	0.0	0	0.0	0	0.0	0
Total	1,312.2	< 1	994.1	< 1	0.0	0	114.6	< 1
	Private Land - No Res.		Water		Overall Total			
	ha	%	ha	%	ha	%	ha	%
Status 1	0.0	0	0.0	0	5,037.8 < 1			
Status 2	0.0	0	0.0	0	9,382.9 < 1			
Status 3	0.5	< 1	0.0	0	163,466.3 21			
Status 4	1,146,328.4	77	300.7	< 1	1,159,334.4 78			
Total	1,146,328.9	77	300.7	< 1	1,337,221.3 100			

GAP Status 1: An area having permanent protection from conversion of natural land cover and a mandated management plan in operation to maintain a natural state within which disturbance events (of natural type, frequency, and intensity) are allowed to proceed without interference or are mimicked through management.

GAP Status 2: An area having permanent protection from conversion of natural land cover and a mandated management plan in operation to maintain a primarily natural state, but which may receive use or management practices that degrade the quality of existing natural communities.

GAP Status 3: An area having permanent protection from conversion of natural land cover for the majority of the area, but subject to extractive uses of either a broad, low-intensity type or localized intense type. It also confers protection to federally listed endangered and threatened species throughout the area.

GAP Status 4: Lack of irrevocable easement or mandate to prevent conversion of natural habitat types to anthropogenic habitat types. Allows for intensive use throughout the tract. Also includes those tracts for which the existence of such restrictions or sufficient information to establish a higher status is unknown.

PREDICTED HABITAT MODEL(S):

Year-round Model:

Habitat Description: *Rana sevos* principally occupies open longleaf pine-scrub oak forests developed on sandy soils (Bailey & Means 2004). Although highly terrestrial they require isolated, temporary wetland breeding sites (NatureServe 2005, Bailey & Means 2004).

Ecosystem Classifiers: Evergreen, Flatwoods. Amy Silvano 12apr05

Selected Map Units:

Functional Group	Map Unit Name
Forest/Woodland	East Gulf Coastal Plain Interior Upland Longleaf Pine Woodland - Loblolly Modifier
Forest/Woodland	East Gulf Coastal Plain Interior Upland Longleaf Pine Woodland - Offsite Hardwood Modifier
Forest/Woodland	East Gulf Coastal Plain Interior Upland Longleaf Pine Woodland - Open Understory Modifier
Forest/Woodland	East Gulf Coastal Plain Interior Upland Longleaf Pine Woodland - Scrub/Shrub Modifier
Wetlands	East Gulf Coastal Plain Near-Coast Pine Flatwoods - Offsite Hardwood Modifier
Wetlands	East Gulf Coastal Plain Near-Coast Pine Flatwoods - Open Understory Modifier
Wetlands	East Gulf Coastal Plain Near-Coast Pine Flatwoods - Scrub/Shrub Understory Modifier
Wetlands	East Gulf Coastal Plain Treeless Savanna and Wet Prairie

CITATIONS: Bailey, M. A. and D. Bruce Means. 2004. Dusky Gopher Frog, *Rana capito* spp. Pages in Mirarchi, Ralph E. ed. Alabama Wildlife, V. 1: a Checklist of Vertebrates and Selected Invertebrates: Aquatic Mollusks, Fishes, Amphibians, Reptiles, Birds, and Mammals

For more information:: SE-GAP Analysis Project / BaSIC
127 David Clark Labs
Dept. of Biology, NCSU
Raleigh, NC 27695-7617
(919) 513-2853
www.basic.ncsu.edu/segap

Compiled: 15 September 2011

This data was compiled and/or developed by the Southeast GAP Analysis Project at The Biodiversity and Spatial Information Center, North Carolina State University.