



SOUTHEAST GAP ANALYSIS PROJECT



Species Modeling Report

Little Grass Frog

Pseudacris ocularis

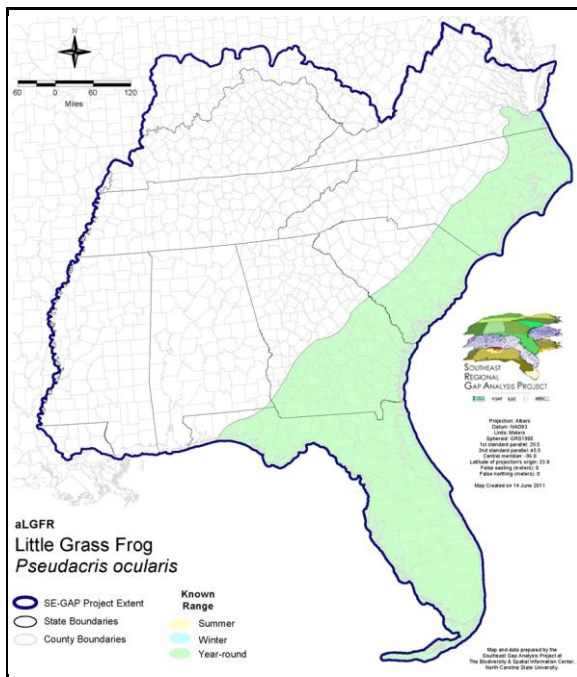
Taxa: Amphibian
 Order: Anura
 Family: Hylidae

SE-GAP Spp Code: **aLGFR**

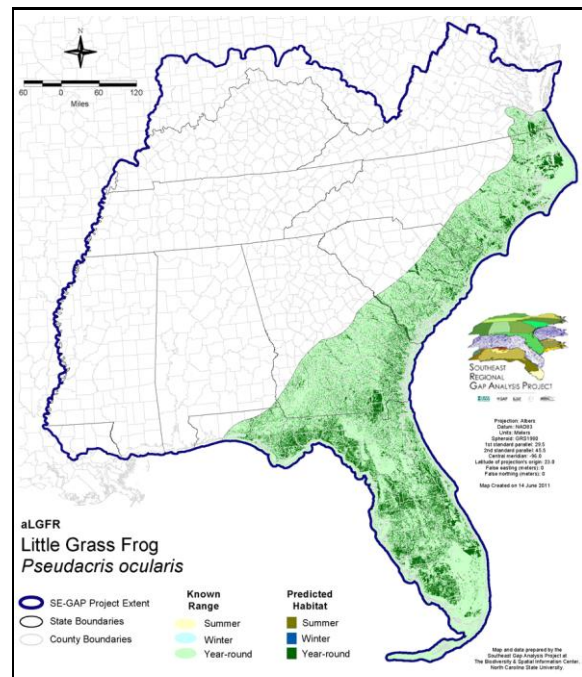
ITIS Species Code: 207286

NatureServe Element Code: AAABC05110

KNOWN RANGE:



PREDICTED HABITAT:



Range Map Link: http://www.basic.ncsu.edu/segap/datazip/maps/SE_Range_aLGFR.pdf

Predicted Habitat Map Link: http://www.basic.ncsu.edu/segap/datazip/maps/SE_Dist_aLGFR.pdf

GAP Online Tool Link: <http://www.gapservice.ncsu.edu/segap/segap/index2.php?species=aLGFR>

Data Download: http://www.basic.ncsu.edu/segap/datazip/region/vert/aLGFR_se00.zip

PROTECTION STATUS:

Reported on March 14, 2011

Federal Status: ---

State Status: ---

NS Global Rank: G5

NS State Rank: AL (S1), FL (SNR), GA (S455), NC (S5), SC (SNR), VA (S3)

SUMMARY OF PREDICTED HABITAT BY MANAGMENT AND GAP PROTECTION STATUS:

	US FWS		US Forest Service		Tenn. Valley Author.		US DOD/ACOE	
	ha	%	ha	%	ha	%	ha	%
Status 1	200,765.4	2	5,348.3	< 1	0.0	0	0.0	0
Status 2	116,797.8	1	37,977.4	< 1	0.0	0	0.0	0
Status 3	703.9	< 1	250,593.6	3	0.0	0	99,095.7	1
Status 4	1,289.6	< 1	0.0	0	0.0	0	7.4	< 1
Total	319,556.7	4	293,919.2	3	0.0	0	99,103.1	1
	US Dept. of Energy		US Nat. Park Service		NOAA		Other Federal Lands	
	ha	%	ha	%	ha	%	ha	%
Status 1	0.0	0	30,090.2	< 1	12.2	< 1	6,963.6	< 1
Status 2	0.0	0	2,852.6	< 1	2,220.6	< 1	10.5	< 1
Status 3	14,517.2	< 1	150,952.1	2	0.0	0	256.1	< 1
Status 4	0.0	0	0.0	0	0.0	0	0.0	0
Total	14,517.2	< 1	183,894.9	2	2,232.7	< 1	7,230.2	< 1
	Native Am. Reserv.		State Park/Hist. Park		State WMA/Gameland		State Forest	
	ha	%	ha	%	ha	%	ha	%
Status 1	0.0	0	0.0	0	0.0	0	0.0	0
Status 2	0.0	0	571.9	< 1	313,657.8	4	0.0	0
Status 3	0.0	0	426,153.6	5	43,180.5	< 1	169,779.1	2
Status 4	0.0	0	< 0.1	< 1	2,086.3	< 1	0.0	0
Total	0.0	0	426,725.6	5	358,924.6	4	169,779.1	2
	State Coastal Reserve		ST Nat.Area/Preserve		Other State Lands		Private Cons. Easemt.	
	ha	%	ha	%	ha	%	ha	%
Status 1	0.0	0	42.6	< 1	0.0	0	0.0	0
Status 2	10,199.5	< 1	29,786.0	< 1	0.0	0	1,788.8	< 1
Status 3	0.0	0	18,060.8	< 1	7,273.3	< 1	90,420.5	1
Status 4	0.0	0	0.0	0	163.5	< 1	< 0.1	< 1
Total	10,199.5	< 1	47,889.4	< 1	7,436.8	< 1	92,209.4	1
	Private Land - No Res.		Water		Overall Total			
	ha	%	ha	%	ha	%	ha	%
Status 1	0.0	0	0.0	0	243,222.2 3			
Status 2	376.1	< 1	0.0	0	516,239.0 6			
Status 3	1,198.5	< 1	0.0	0	1,272,184.7 18			
Status 4	6,237,231.0	73	16,187.2	< 1	6,257,761.9 73			
Total	6,238,805.7	73	16,187.2	< 1	8,289,407.8 100			

GAP Status 1: An area having permanent protection from conversion of natural land cover and a mandated management plan in operation to maintain a natural state within which disturbance events (of natural type, frequency, and intensity) are allowed to proceed without interference or are mimicked through management.

GAP Status 2: An area having permanent protection from conversion of natural land cover and a mandated management plan in operation to maintain a primarily natural state, but which may receive use or management practices that degrade the quality of existing natural communities.

GAP Status 3: An area having permanent protection from conversion of natural land cover for the majority of the area, but subject to extractive uses of either a broad, low-intensity type or localized intense type. It also confers protection to federally listed endangered and threatened species throughout the area.

GAP Status 4: Lack of irrevocable easement or mandate to prevent conversion of natural habitat types to anthropogenic habitat types. Allows for intensive use throughout the tract. Also includes those tracts for which the existence of such restrictions or sufficient information to establish a higher status is unknown.

PREDICTED HABITAT MODEL(S):

Year-round Model:

Habitat Description: Little grass frogs are found on the Coastal Plain in damp or wet habitats in swamps, pine savannas or flatwoods, bottomland hardwoods, and grass/sedge areas near bogs. Breeding sites are largely restricted to flooded grassy areas including roadside ditches, logged areas, meadows, emergent shrub wetlands, flooded pastures (Pague and Mitchell 1987). Eggs are typically laid in clutches of about 100 eggs in conjunction with the spring and summer rains (NatureServe 2004). Amy Silvano 15mar05

Not much literature on this species

Hydrography Mask:

Freshwater Only

Utilizes flowing water features with buffer of 60m from selected water features.

Utilizes open water features with buffer of 60m from selected water features.

Utilizes wet vegetation features with buffers of 60m from and unlimited into selected vegetation features.

Selected Map Units:

Functional Group	Map Unit Name
Anthropogenic	Developed Open Space
Anthropogenic	Pasture/Hay
Anthropogenic	Successional Grassland/Herbaceous
Anthropogenic	Successional Grassland/Herbaceous (Other)
Anthropogenic	Successional Grassland/Herbaceous (Utility Swath)
Anthropogenic	Successional Shrub/Scrub (Clear Cut)
Anthropogenic	Successional Shrub/Scrub (Other)
Anthropogenic	Successional Shrub/Scrub (Utility Swath)
Coastal Dune & Freshwater Wetland	Atlantic and Gulf Coastal Plain Interdunal Wetland
Wetlands	Atlantic Coastal Plain Blackwater Stream Floodplain Forest - Forest Modifier
Wetlands	Atlantic Coastal Plain Blackwater Stream Floodplain Forest - Herbaceous Modifier
Wetlands	Atlantic Coastal Plain Brownwater Stream Floodplain Forest
Wetlands	Atlantic Coastal Plain Clay-Based Carolina Bay Forested Wetland
Wetlands	Atlantic Coastal Plain Clay-Based Carolina Bay Herbaceous Wetland
Wetlands	Atlantic Coastal Plain Depression Pondshore
Wetlands	Atlantic Coastal Plain Nonriverine Swamp and Wet Hardwood Forest - Taxodium/Nyssa Modifier
Wetlands	Atlantic Coastal Plain Nonriverine Swamp and Wet Hardwood Forest - Oak Dominated Modifier
Wetlands	Atlantic Coastal Plain Northern Basin Peat Swamp
Wetlands	Atlantic Coastal Plain Northern Basin Swamp and Wet Hardwood Forest
Wetlands	Atlantic Coastal Plain Northern Pondshore
Wetlands	Atlantic Coastal Plain Northern Wet Longleaf Pine Savanna and Flatwoods
Wetlands	Atlantic Coastal Plain Peatland Pocosin
Wetlands	Atlantic Coastal Plain Sandhill Seep
Wetlands	Atlantic Coastal Plain Small Blackwater River Floodplain Forest
Wetlands	Atlantic Coastal Plain Small Brownwater River Floodplain Forest
Wetlands	Atlantic Coastal Plain Southern Wet Pine Savanna and Flatwoods
Wetlands	Atlantic Coastal Plain Streamhead Seepage Swamp, Pocosin, and Baygall
Wetlands	Central Florida Herbaceous Pondshore
Wetlands	Central Florida Herbaceous Seep
Wetlands	Central Florida Pine Flatwoods
Wetlands	East Gulf Coastal Plain Interior Shrub Bog
Wetlands	East Gulf Coastal Plain Large River Floodplain Forest - Forest Modifier
Wetlands	East Gulf Coastal Plain Large River Floodplain Forest - Herbaceous Modifier
Wetlands	East Gulf Coastal Plain Near-Coast Pine Flatwoods - Offsite Hardwood Modifier
Wetlands	East Gulf Coastal Plain Near-Coast Pine Flatwoods - Open Understory Modifier
Wetlands	East Gulf Coastal Plain Near-Coast Pine Flatwoods - Scrub/Shrub Understory Modifier
Wetlands	East Gulf Coastal Plain Northern Depression Pondshore

Wetlands	East Gulf Coastal Plain Northern Seepage Swamp
Wetlands	East Gulf Coastal Plain Small Stream and River Floodplain Forest
Wetlands	East Gulf Coastal Plain Southern Depression Pondshore
Wetlands	East Gulf Coastal Plain Southern Loblolly-Hardwood Flatwoods
Wetlands	East Gulf Coastal Plain Treeless Savanna and Wet Prairie
Wetlands	Floridian Highlands Freshwater Marsh
Wetlands	South Florida Bayhead Swamp
Wetlands	South Florida Cypress Dome
Wetlands	South Florida Dwarf Cypress Savanna
Wetlands	South Florida Freshwater Slough and Gator Hole
Wetlands	South Florida Pine Flatwoods
Wetlands	South Florida Pond-Apple/Popash Slough
Wetlands	South Florida Wet Marl Prairie
Wetlands	South Florida Willow Head
Wetlands	Southern Coastal Plain Blackwater River Floodplain Forest
Wetlands	Southern Coastal Plain Herbaceous Seepage Bog
Wetlands	Southern Coastal Plain Hydric Hammock
Wetlands	Southern Coastal Plain Nonriverine Basin Swamp
Wetlands	Southern Coastal Plain Nonriverine Cypress Dome
Wetlands	Southern Coastal Plain Seepage Swamp and Baygall
Wetlands	Southern Coastal Plain Spring-run Stream Aquatic Vegetation

CITATIONS: Behler, J. L., and F. W. King. 1979. *The Audubon Society field guide to North American reptiles and amphibians*. Alfred A. Knopf, New York. 719 pp.

Cocroft, R. B. 1994. A cladistic analysis of chorus frog phylogeny (Hylidae:PSEUDACRIS). *Herpetologica* 50:420-437.

Conant, R. 1975. *A Field Guide to Reptiles and Amphibians of Eastern and Central North America*. Second Edition. Houghton Mifflin Company, Boston, Massachusetts. xvii + 429 pp.

Franz, R., and C. J. Chantell. 1978. *Limnaeodius, L. ocularis*. *Cat. Am. Amph. Rep.* 209.1-209.2.

Hedges, S. B. 1986. An electrophoretic analysis of holarctic hylid frog evolution. *Syst. Zool.* 35:1-21.

Martof, B. S., W. M. Palmer, J. R. Bailey, and J. R. Harrison, III. 1980. *Amphibians and reptiles of the Carolinas and Virginia*. University of North Carolina Press, Chapel Hill, North Carolina. 264 pp.

Mount, R. H. 1975. *The Reptiles and Amphibians of Alabama*. Auburn University Agricultural Experiment Station, Auburn, Alabama. vii + 347 pp.

Pague, C.A. and J.C. Mitchell. 1987. The status of amphibians in Virginia. *Virginia Journal of Science* 38: 304-318.

Wilson, L. A. 1995. *The Land Manager's Guide to the amphibians and reptiles of the South*. Chapel Hill, NC: The Nature Conservancy.

For more information:: SE-GAP Analysis Project / BaSIC
 127 David Clark Labs
 Dept. of Biology, NCSU
 Raleigh, NC 27695-7617
 (919) 513-2853
www.basic.ncsu.edu/segap

Compiled: 15 September 2011

This data was compiled and/or developed by the Southeast GAP Analysis Project at The Biodiversity and Spatial Information Center, North Carolina State University.