



SOUTHEAST GAP ANALYSIS PROJECT



Species Modeling Report

Chamberlain's Dwarf Salamander

Eurycea chamberlaini

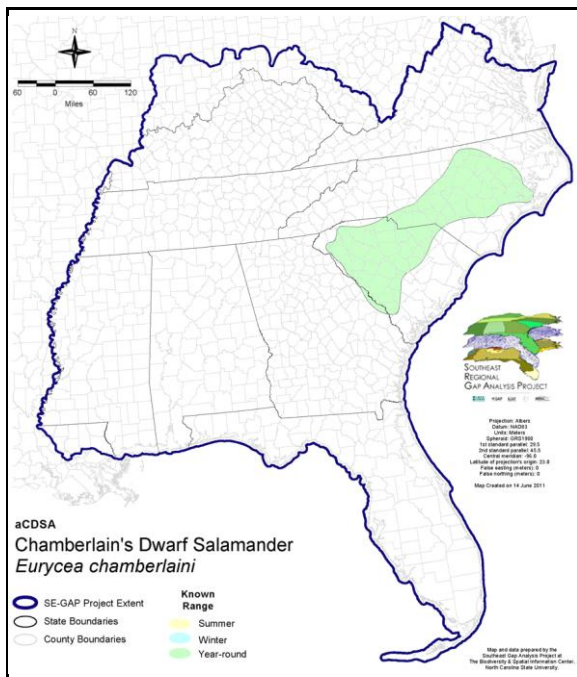
Taxa: Amphibian
 Order: Caudata
 Family: Plethodontidae

SE-GAP Spp Code: **aCDSA**

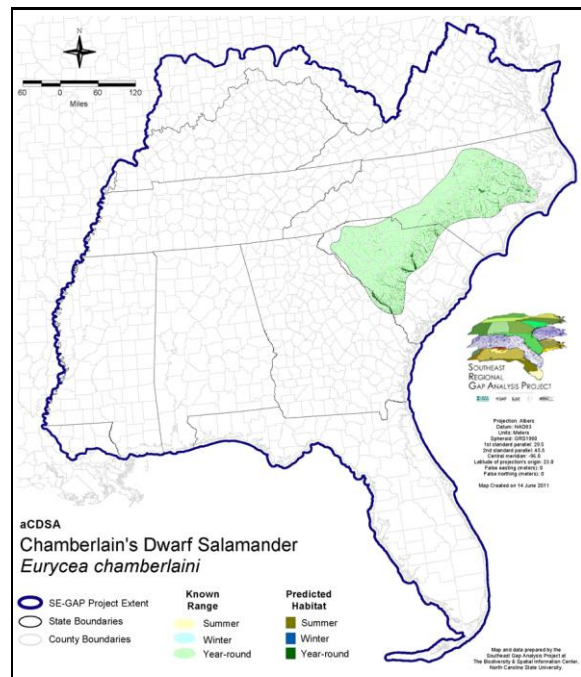
ITIS Species Code: ---

NatureServe Element Code: AAAAD05092

KNOWN RANGE:



PREDICTED HABITAT:



Range Map Link: http://www.basic.ncsu.edu/segap/datazip/maps/SE_Range_aCDSA.pdf

Predicted Habitat Map Link: http://www.basic.ncsu.edu/segap/datazip/maps/SE_Dist_aCDSA.pdf

GAP Online Tool Link: <http://www.gapservice.ncsu.edu/segap/segap/index2.php?species=aCDSA>

Data Download: http://www.basic.ncsu.edu/segap/datazip/region/vert/aCDSA_se00.zip

PROTECTION STATUS:

Reported on March 14, 2011

Federal Status: ---

State Status: ---

NS Global Rank: G5

NS State Rank: FL (SNR), GA (S1), NC (S3S4), SC (SNR)

SUMMARY OF PREDICTED HABITAT BY MANAGMENT AND GAP PROTECTION STATUS:

	US FWS		US Forest Service		Tenn. Valley Author.		US DOD/ACOE	
	ha	%	ha	%	ha	%	ha	%
Status 1	0.0	0	0.0	0	0.0	0	0.0	0
Status 2	2,439.0	< 1	164.7	< 1	0.0	0	0.0	0
Status 3	0.0	0	6,240.3	1	0.0	0	6,576.0	1
Status 4	0.0	0	0.0	0	0.0	0	0.0	0
Total	2,439.0	< 1	6,405.0	1	0.0	0	6,576.0	1
	US Dept. of Energy		US Nat. Park Service		NOAA		Other Federal Lands	
	ha	%	ha	%	ha	%	ha	%
Status 1	0.0	0	7,492.0	1	0.0	0	0.0	0
Status 2	0.0	0	0.0	0	0.0	0	0.0	0
Status 3	14,041.6	2	31.3	< 1	0.0	0	0.8	< 1
Status 4	0.0	0	0.0	0	0.0	0	0.0	0
Total	14,041.6	2	7,523.3	1	0.0	0	0.8	< 1
	Native Am. Reserv.		State Park/Hist. Park		State WMA/Gameland		State Forest	
	ha	%	ha	%	ha	%	ha	%
Status 1	0.0	0	0.0	0	0.0	0	0.0	0
Status 2	0.0	0	0.0	0	3,589.4	< 1	0.0	0
Status 3	0.0	0	1,074.5	< 1	5,397.2	< 1	2,915.2	< 1
Status 4	0.0	0	0.0	0	262.9	< 1	0.0	0
Total	0.0	0	1,074.5	< 1	9,249.5	2	2,915.2	< 1
	State Coastal Reserve		ST Nat.Area/Preserve		Other State Lands		Private Cons. Easemt.	
	ha	%	ha	%	ha	%	ha	%
Status 1	0.0	0	63.2	< 1	0.0	0	0.0	0
Status 2	0.0	0	1,599.9	< 1	0.0	0	0.0	0
Status 3	0.0	0	0.0	0	62.1	< 1	93.9	< 1
Status 4	0.0	0	0.0	0	497.5	< 1	0.0	0
Total	0.0	0	1,663.1	< 1	559.6	< 1	93.9	< 1
	Private Land - No Res.		Water		Overall Total			
	ha	%	ha	%	ha	%		
Status 1	0.0	0	0.0	0	7,555.1	1		
Status 2	0.0	0	0.0	0	7,793.0	1		
Status 3	0.0	0	0.0	0	36,433.0	7		
Status 4	513,588.3	90	182.9	< 1	514,794.5	90		
Total	513,588.3	90	182.9	< 1	566,575.7	100		

GAP Status 1: An area having permanent protection from conversion of natural land cover and a mandated management plan in operation to maintain a natural state within which disturbance events (of natural type, frequency, and intensity) are allowed to proceed without interference or are mimicked through management.

GAP Status 2: An area having permanent protection from conversion of natural land cover and a mandated management plan in operation to maintain a primarily natural state, but which may receive use or management practices that degrade the quality of existing natural communities.

GAP Status 3: An area having permanent protection from conversion of natural land cover for the majority of the area, but subject to extractive uses of either a broad, low-intensity type or localized intense type. It also confers protection to federally listed endangered and threatened species throughout the area.

GAP Status 4: Lack of irrevocable easement or mandate to prevent conversion of natural habitat types to anthropogenic habitat types. Allows for intensive use throughout the tract. Also includes those tracts for which the existence of such restrictions or sufficient information to establish a higher status is unknown.

PREDICTED HABITAT MODEL(S):

Year-round Model:

Habitat Description: Chamberlain's dwarf salamander was described as a new species by Harrison and Guttman (2003). Harrison and Guttman (2003) stated that the species is known from portions of the Piedmont in both North and South Carolina, the upper Coastal Plain in South Carolina, and portions of the central Coastal Plain in North Carolina. Additionally, *Eurycea chamberlaini* has been collected in Georgia, Alabama, and Florida. This new species corresponds with the "yellow morph" of *Eurycea quadriadigitata*, the dwarf salamander. Chamberlain's dwarf salamanders occur in a variety of habitats but seems to prefer seepage areas near streams or ponds, particularly in Piedmont and upper Coastal Plain areas (Harrison and Guttman 2003). They are also associated with forested wetlands. They use fallen logs and debris for cover habitat. (information taken from NatureServe, June 6, 2005). Stacy Smith, 7June05

Hydrography Mask:

Freshwater Only

Utilizes flowing water features with buffer of 30m from selected water features.

Utilizes open water features with buffer of 30m from selected water features.

Utilizes wet vegetation features with buffer of unlimited into selected vegetation features.

Selected Map Units:

Functional Group	Map Unit Name
Forest/Woodland	Atlantic Coastal Plain Fall-line Sandhills Longleaf Pine Woodland - Open Understory Modifier
Forest/Woodland	Atlantic Coastal Plain Fall-line Sandhills Longleaf Pine Woodland - Scrub/Shrub Understory Modifier
Forest/Woodland	Atlantic Coastal Plain Upland Longleaf Pine Woodland
Forest/Woodland	East Gulf Coastal Plain Interior Upland Longleaf Pine Woodland - Open Understory Modifier
Forest/Woodland	East Gulf Coastal Plain Interior Upland Longleaf Pine Woodland - Scrub/Shrub Modifier
Wetlands	Atlantic Coastal Plain Blackwater Stream Floodplain Forest - Forest Modifier
Wetlands	Atlantic Coastal Plain Brownwater Stream Floodplain Forest
Wetlands	Atlantic Coastal Plain Clay-Based Carolina Bay Forested Wetland
Wetlands	Atlantic Coastal Plain Nonriverine Swamp and Wet Hardwood Forest - Taxodium/Nyssa Modifier
Wetlands	Atlantic Coastal Plain Nonriverine Swamp and Wet Hardwood Forest - Oak Dominated Modifier
Wetlands	Atlantic Coastal Plain Sandhill Seep
Wetlands	Atlantic Coastal Plain Small Blackwater River Floodplain Forest
Wetlands	Atlantic Coastal Plain Small Brownwater River Floodplain Forest
Wetlands	Atlantic Coastal Plain Southern Wet Pine Savanna and Flatwoods
Wetlands	Atlantic Coastal Plain Streamhead Seepage Swamp, Pocosin, and Baygall
Wetlands	Southern Coastal Plain Herbaceous Seepage Bog
Wetlands	Southern Coastal Plain Hydric Hammock
Wetlands	Southern Coastal Plain Nonriverine Basin Swamp
Wetlands	Southern Coastal Plain Nonriverine Cypress Dome
Wetlands	Southern Coastal Plain Seepage Swamp and Baygall
Wetlands	Southern Piedmont Seepage Wetland
Wetlands	Southern Piedmont Small Floodplain and Riparian Forest

CITATIONS: Harrison, J.R., and S.I. Guttman. 2003. A New Species of *Eurycea* (Caudata: Plethodontidae) from North and South Carolina. *Southeastern Naturalist* 2(2): 159-178.

For more information:: SE-GAP Analysis Project / BaSIC
127 David Clark Labs
Dept. of Biology, NCSU
Raleigh, NC 27695-7617
(919) 513-2853
www.basic.ncsu.edu/segap

Compiled: 15 September 2011

This data was compiled and/or developed by the Southeast GAP Analysis Project at The Biodiversity and Spatial Information Center, North Carolina State University.